

4

3

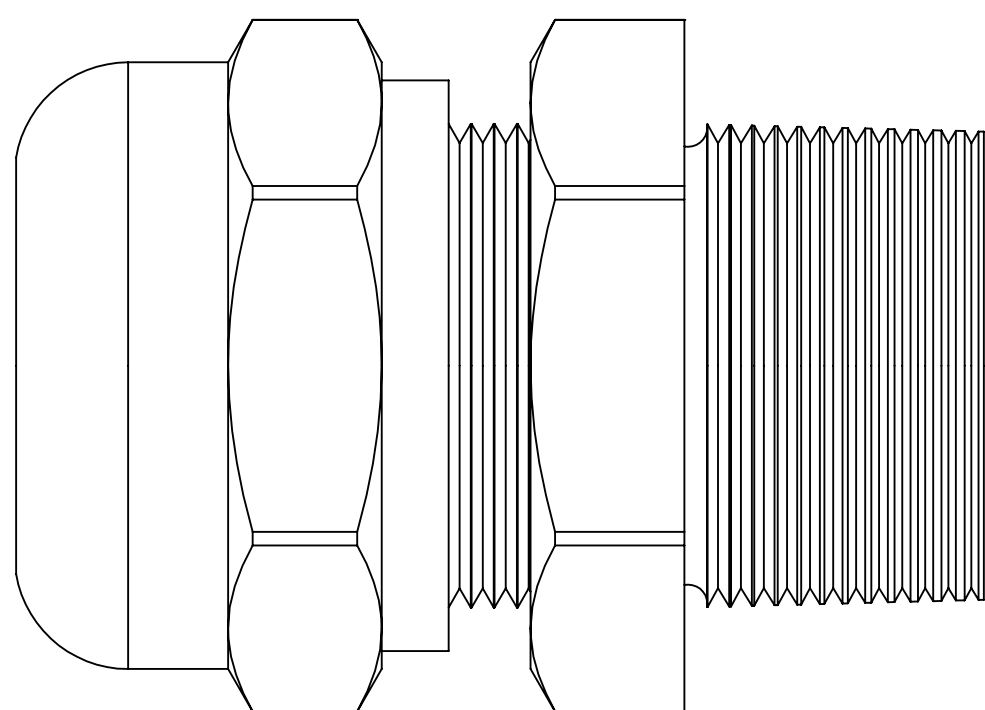
2

1

EMI-RFI Elongated Dome and Flex Fittings Metric - Nickel Plated Brass

PART NUMBERS		CABLE RANGE	THREAD RANGE	BODY LENGTH(B)	THREAD LENGTH(D)	WRENCH FLAT(E1/E)
DOME	FLEX	Inches(mm)		Inches(mm)	Inches(mm)	Inches(mm)
CD12DA-BE	CF12DA-BE	.11 - .26 (3-6.5)	M12 x 1,5	2.16 (55)	.39 (10)	.55 (14)
CD12DR-BE	CF12DR-BE	.08 - .20 (2-5)				
CD16DA-BE	CF16DA-BE	.20 - .39 (5-10)	M16 x 1,5	3.03 (77)	.39 (10)	.79 (20)
CD16DR-BE	CF16DR-BE	.11 - .27 (3-7)				
CD20DA-BE	CF20DA-BE	.39 - .55 (10-14)	M20 x 1,5	3.86 (98)	.39 (10)	.94 (24)
CD20DR-BE	CF20DR-BE	.27 - .47 (7-12)				
CD25DA-BE	CF25DA-BE	.51 - .71 (13-18)	M25 x 1,5	4.37 (111)	.47 (12)	1.18 (30)
CD25DR-BE	CF25DR-BE	.35 - .63 (9-16)				
CD32DA-BE	-	.71 - .98 (18-25)	M32 x 1,5	1.22(31)	0.47(12)	1.57(40)
CD32DR-BE	-	.51 - .79 (13-20)				
CD40DA-BE	-	.87 - 1.26 (22-32)	M40 x 1,5	1.46(37)	0.59(15)	1.97(50)
CD40DR-BE	-	.79 - 1.02 (20-26)				

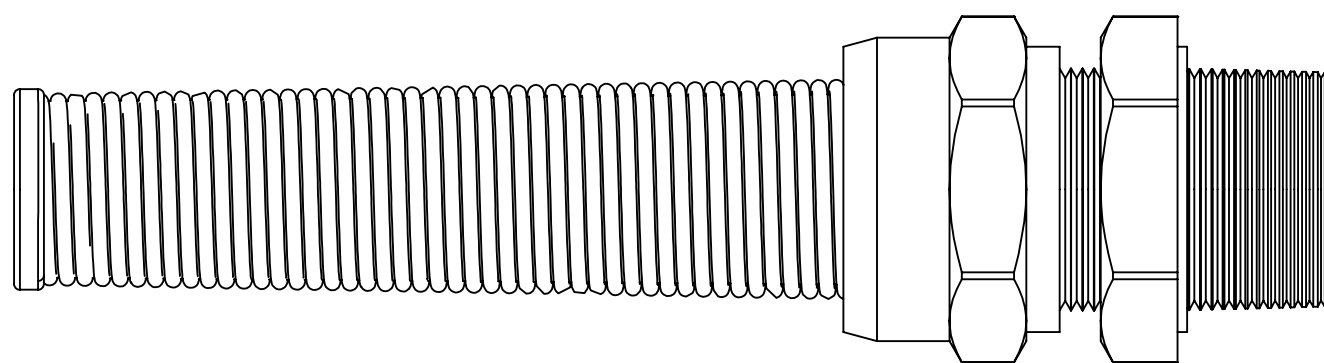
DOME FITTINGS



EMI/RFI Proof - FEED-THROUGH

PART NUMBERS		CABLE RANGE	THREAD RANGE	BODY LENGTH(B)	THREAD LENGTH(D)	WRENCH FLAT(E1/E)
DOME		Inches(mm)		Inches(mm)	Inches(mm)	Inches(mm)
CD12DA-FE		.11 - .26 (3-6.5)	M12 x 1,5	.98 (25)	.39 (10)	.55 (14)
CD16DA-FE		.20 - .39 (5-10)	M16 x 1,5	1.26 (32)	.39 (10)	.79 (20)
CD16DR-FE		.16 - .31 (4-8)	M16 x 1,5	1.14 (29)	.39 (10)	.67 (17) / .75 (19)
CD20DA-FE		.39 - .55 (10-14)	M20 x 1,5	1.30 (33)	.39 (10)	.94 (24)
CD20DR-FE		.24 - .47 (6-12)	M20 x 1,5	1.28 (32.5)	.39 (10)	.87 (22)
CD25DA-FE		.51 - .71 (13-18)	M25 x 1,5	1.54 (39)	.47 (12)	1.18 (30)
CD32DA-FE		.71 - .98 (18-25)	M32 x 1,5	1.77 (45)	.47 (12)	1.57 (40)
CD40DA-FE		.94 - 1.26 (24-32)	M40 x 1,5	2.01 (51)	.59 (15)	1.97 (50)

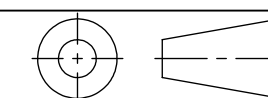
FLEX FITTINGS



NOTES:

- 1) GENERAL DIMENSIONS DRAWINGS.
- 2) DIMENSIONS [] ARE IN MILLIMETER.
- 3) DIMENSIONS NOTED ARE FOR REFERENCE ONLY.

Third angle projection



14853 E HINDSDALE AVE, SUITE D
CENTENNIAL, CO 80112-4240, USA
TEL: +1-303-699-1135
TOLL FREE: +1-800-456-9012
E MAIL: info@sealconusa.com,
WEBSITE: www.sealconusa.com

4

3

2