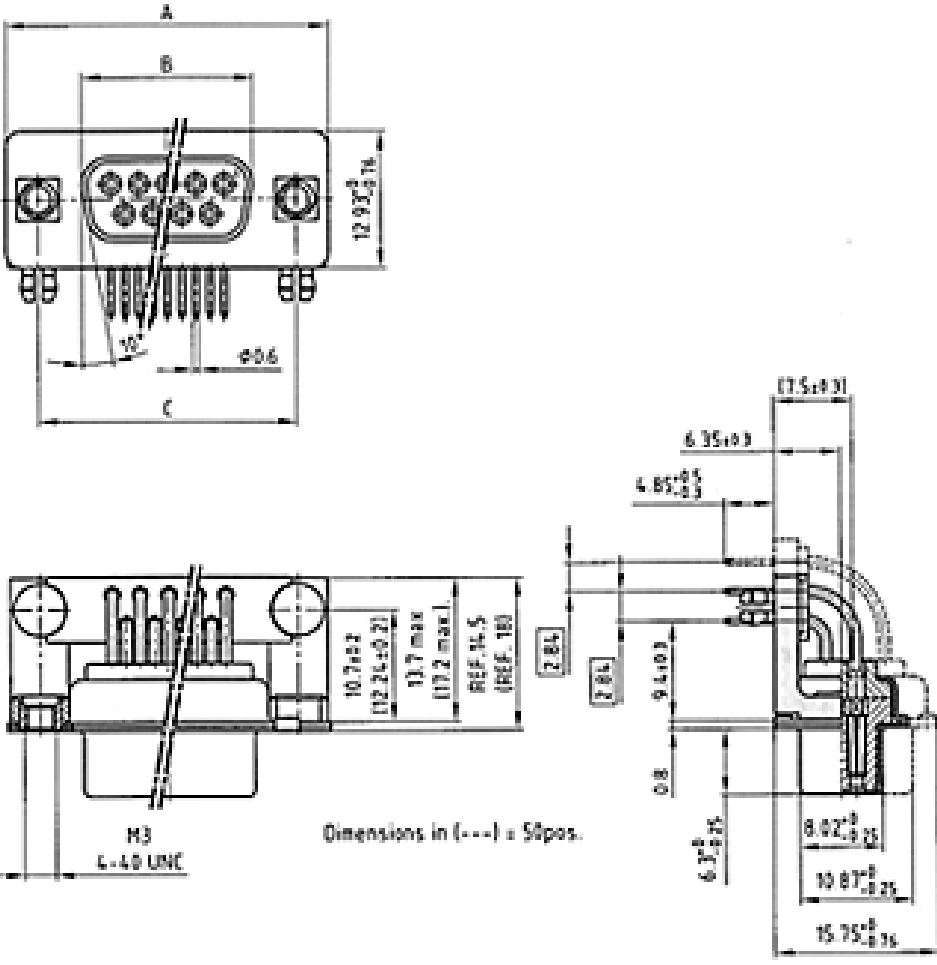


D-Sub Connector
Solder pin angled .370"
with metal bracket
threaded insert and clip
connector with flush bracket

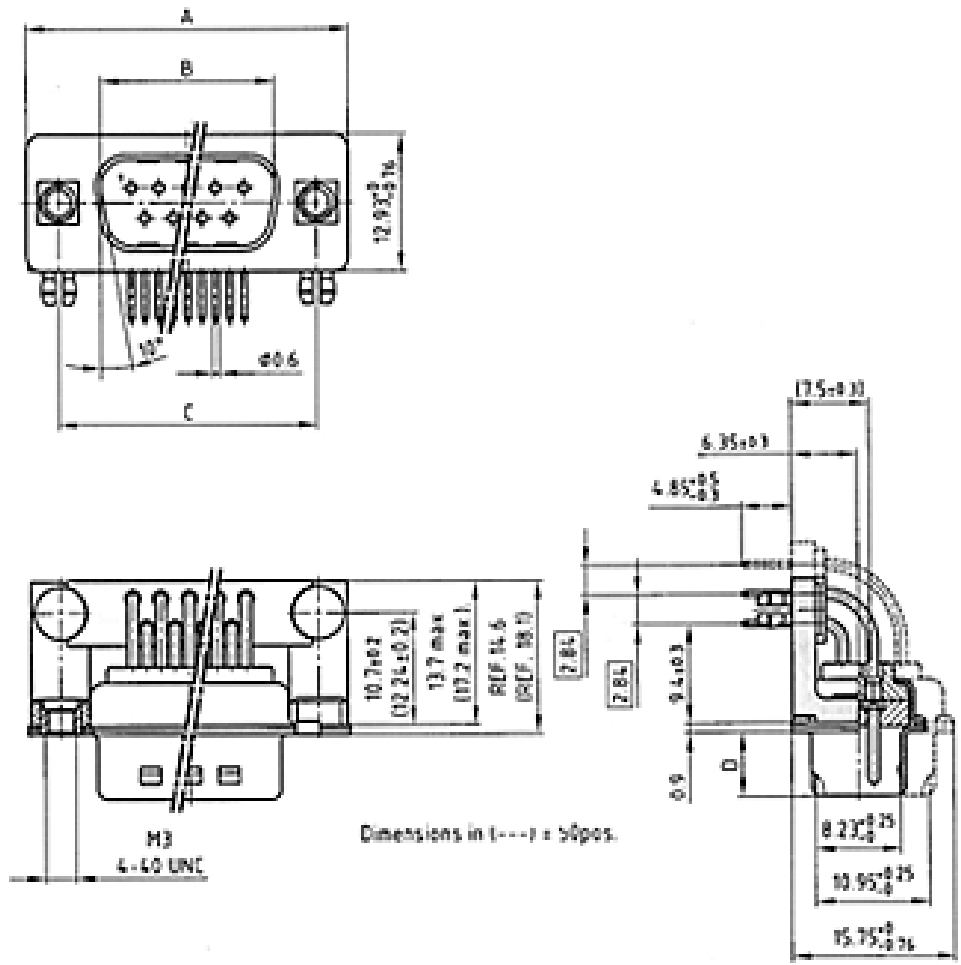


(click on the schematic(s) for a more detailed view)

Socket connector



Plug connector



Socket Connector			
No. of pos.	A - 0,76	B - 0,25	C
09	31,19	16,46	25,00 + 0,12 - 0,13
15	39,52	24,79	33,30 + 0,15 - 0,10
25	53,42	38,50	47,04 ± 0,13
37	69,70	54,96	63,50 ± 0,13
50	67,31	52,55	61,10 + 0,14 - 0,11

Plug Connector				
No. of pos.	A - 0,76	B + 0,25	C	D - 0,30
09	31,19	16,79	25,00 + 0,12 - 0,13	6,12
15	39,52	25,12	33,30 + 0,15 - 0,10	6,12
25	53,42	38,84	47,04 ± 0,13	5,99
37	69,70	55,30	63,50 ± 0,13	5,99
50	67,31	52,68	61,10 + 0,14 - 0,11	5,99

Part Numbers

No.of Pos.	Socket connector tin -plated	
	4-40 UNC	M3
09	164 A 19339 X	164 A 19389 X
15	164 A 19349 X	164 A 19399 X
25	164 A 19359 X	164 A 19409 X
37	164 A 19369 X	164 A 19419 X
50	164 A 19379 X	164 A 19429 X

No.of Pos.	Plug connector tin -plated with ground indent	
	4-40 UNC	M3
09	163 A 18909 X	163 A 18959 X
15	163 A 18919 X	163 A 18969 X
25	163 A 18929 X	163 A 18979 X
37	163 A 18939 X	163 A 18989 X
50	163 A 18949 X	163 A 18999 X

Clip for PCB Ø 3.1 mm ± 0.1 mm, PCB-thickness = 1.6 mm



REG.-Nr. 40000440



File #: E202784



File #: LR115000