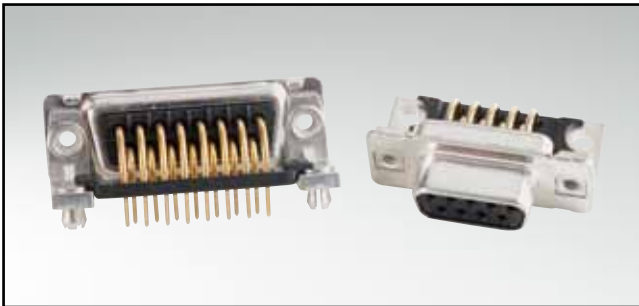


# D-SUB STANDARD

Solder pin – Angled – .370" / 9.4 mm – Precision machined contacts – Metal bracket

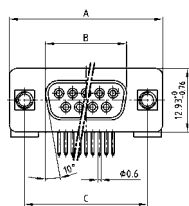


RoHS compliant – CSA listed, File No.: LR 115000-1 – UL listed, File No.: E202784

## DESCRIPTION

- Mounting styles:
  - with mounting bracket and 4-40 UNC or M3 threaded insert
  - with mounting bracket, PCB clip and 4-40 UNC or M3 threaded insert
- Quality class 3 (also available in quality class 1)
- Shell: Steel tin plated (brass tin plated or stainless steel available on request)

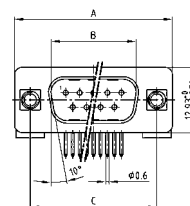
## SOCKET CONNECTOR



No. of pos.	A -0.76	B -0.25	C
09	31.19	16.46	25.00 +0.12
15	39.52	24.79	33.30 +0.15 -0.10
25	53.42	38.50	47.04 +0.13
37	69.70	54.96	63.50 +0.13
50	67.31	52.55	61.10 +0.14 -0.11

PCB layout: Kat1kGAA

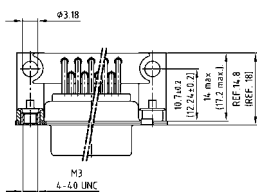
## PLUG CONNECTOR



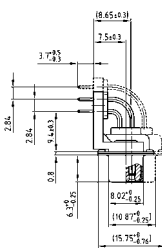
No. of pos.	A -0.76	B -0.25	C	D -0.3
09	31.19	16.79	25.00 +0.12	6.12
15	39.52	25.12	33.30 +0.15 -0.10	6.12
25	53.42	38.84	47.04 +0.13	5.99
37	69.70	55.30	63.50 +0.13	5.99
50	67.31	52.68	61.10 +0.14 -0.11	5.99

PCB layout: Kat1kGHA

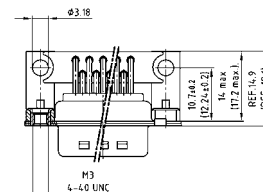
### Mounting style: Threaded insert



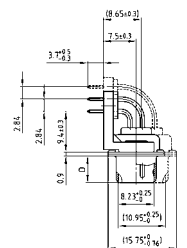
50 pos. = Dim. in ( \_ \_ )



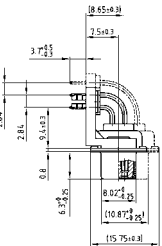
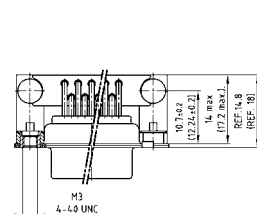
### Mounting style: Threaded insert



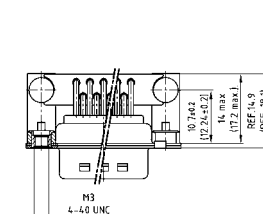
50 pos. = Dim. in ( \_ \_ )



### Mounting style: PCB clip, threaded insert



### Mounting style: PCB clip, threaded insert



## ORDER DATA

SOCKET CONNECTOR		
No. of pos.	Mounting style	Part Number
09	4-40 UNC Threaded insert	164 A 10969 X
15	4-40 UNC Threaded insert	164 A 10979 X
25	4-40 UNC Threaded insert	164 A 10989 X
37	4-40 UNC Threaded insert	164 A 10999 X
50	4-40 UNC Threaded insert	164 A 18739 X
09	M3 Threaded insert	164 A 11019 X
15	M3 Threaded insert	164 A 11029 X
25	M3 Threaded insert	164 A 11039 X
37	M3 Threaded insert	164 A 11049 X
50	M3 Threaded insert	164 A 18749 X
09	PCB clip / 4-40 UNC Threaded insert	164 A 16769 X
15	PCB clip / 4-40 UNC Threaded insert	164 A 16779 X
25	PCB clip / 4-40 UNC Threaded insert	164 A 16789 X
37	PCB clip / 4-40 UNC Threaded insert	164 A 16799 X
50	PCB clip / 4-40 UNC Threaded insert	164 A 18759 X
09	PCB clip / M3 Threaded insert	164 A 16809 X
15	PCB clip / M3 Threaded insert	164 A 16819 X
25	PCB clip / M3 Threaded insert	164 A 16829 X
37	PCB clip / M3 Threaded insert	164 A 16839 X
50	PCB clip / M3 Threaded insert	164 A 18769 X

PLUG CONNECTOR		
No. of pos.	Mounting style	Part Number
09	4-40 UNC Threaded insert	163 A 12019 X
15	4-40 UNC Threaded insert	163 A 12029 X
25	4-40 UNC Threaded insert	163 A 12039 X
37	4-40 UNC Threaded insert	163 A 12049 X
50	4-40 UNC Threaded insert	163 A 18319 X
09	M3 Threaded insert	163 A 12069 X
15	M3 Threaded insert	163 A 12079 X
25	M3 Threaded insert	163 A 12089 X
37	M3 Threaded insert	163 A 12099 X
50	M3 Threaded insert	163 A 18329 X
09	PCB clip / 4-40 UNC Threaded insert	163 A 16359 X
15	PCB clip / 4-40 UNC Threaded insert	163 A 16369 X
25	PCB clip / 4-40 UNC Threaded insert	163 A 16379 X
37	PCB clip / 4-40 UNC Threaded insert	163 A 16389 X
50	PCB clip / 4-40 UNC Threaded insert	163 A 18339 X
09	PCB clip / M3 Threaded insert	163 A 16399 X
15	PCB clip / M3 Threaded insert	163 A 16409 X
25	PCB clip / M3 Threaded insert	163 A 16419 X
37	PCB clip / M3 Threaded insert	163 A 16429 X
50	PCB clip / M3 Threaded insert	163 A 18349 X

PCB clip .122" / 3.1 ± .004" / 0.10 mm hole diameter and .063" / 1.6 mm circuit board thickness