

16

1610 02

Power supply connectors

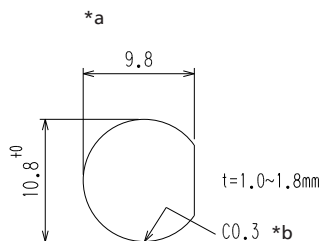
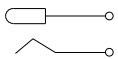
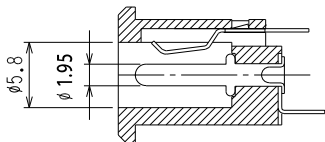
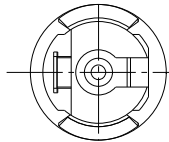
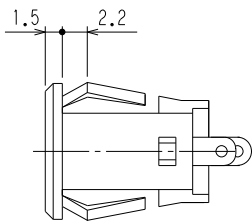
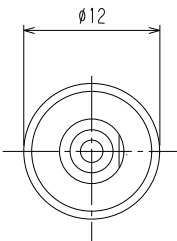
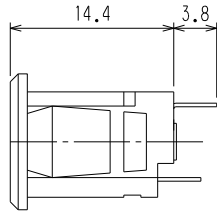


Power supply chassis socket, straight version, with solder eyes, for snap-in front side mounting

State: Active

16

1610 02



*a port in mounting plate
*b for metal plate

Environmental conditions

Temperature range -20 °C/+60 °C

Materials

Insulating body PA GF, HB according to UL94
Contact spring CuZn/CuSn, nickel-plated

Mechanical data

Diameter opening 5,8 mm
Diameter center pin 1,95 mm
Mating cycles $\geq 3000^1$
Insertion force 4–30 N (initial value)
Withdrawal force 4–30 N (initial value)

¹ measured with a gauge plug

Electrical data (at T_{amb} 20 °C)

Contact resistance ≤ 30 m Ω
Rated current 2 A
Rated voltage 24 V DC
Rated impulse voltage 500 V/60 s
Insulation resistance ≥ 100 M Ω

Associated products

Counterparts
 ☞ 1633 02 ☞ 1633 03 ☞ NES/J 21
 ☞ NES/J 21 W ☞ NES/J 210 ☞ XNES/J 210

16

1610 02

Designation	Pole Number	PU (Pieces)	MDQ (Pieces)
1610 02	2	250	500

Packaging:

in bulk, in a cardboard box or a plastic bag