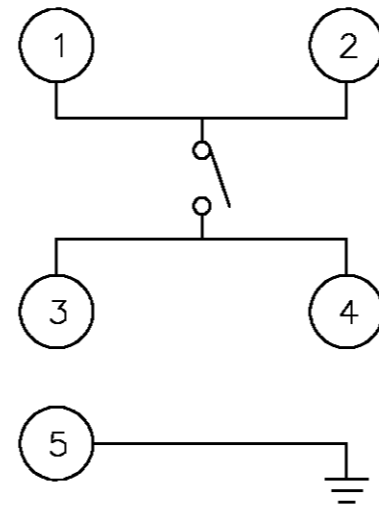
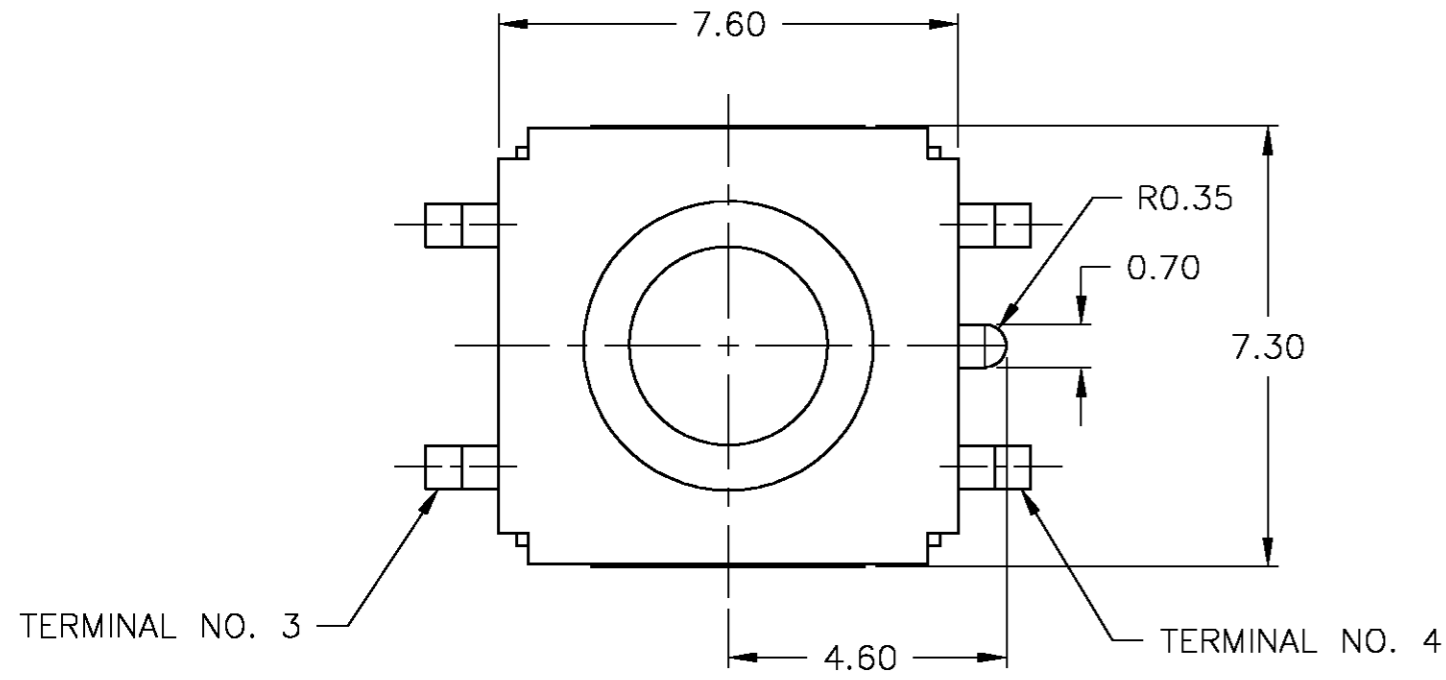


THIS DRAWING IS UNPUBLISHED. RELEASED FOR PUBLICATION
 © COPYRIGHT BY TYCO ELECTRONICS CORPORATION. ALL RIGHTS RESERVED.

Loc		DIST		REVISIONS			
P	LTR	DESCRIPTION		DATE	DWN	APVD	
	D	REV PER OG3C-0493-03		25FEB04	RB	MS	



CIRCUIT DIAGRAM

SPECIFICATIONS

MATERIALS

CASE: THERMOPLASTIC, UL94V-0, BLACK
 ACTUATOR: THERMOPLASTIC, UL94V-0, BLACK
 COVER: NICKEL SILVER
 SEAL: SILICON RUBBER, BLACK
 CONTACT: STAINLESS STEEL, PLATING-SILVER
 TERMINAL: BRASS, PLATING-SILVER/NICKEL

ELECTRICAL

CONTACT RATING: 12VDC, 50mA
 INITIAL CONTACT RESISTANCE: 100 MILLIOHMS MAX, PER EIA RS-448, METHOD 1
 INSULATION RESISTANCE: 100 MEGOHMS MIN @ 100VDC PER EIA RS-186-13E
 DIELECTRIC STRENGTH: 250VAC PER EIA RS-186-4E
 CONTACT BOUNCE: 10 MILLISECOND MAX PER EIA-448-18, METHOD 15

MECHANICAL

ACTUATOR OPERATING FORCE: SEE TABLE
 ACTUATOR TRAVEL: 0.35±0.2mm

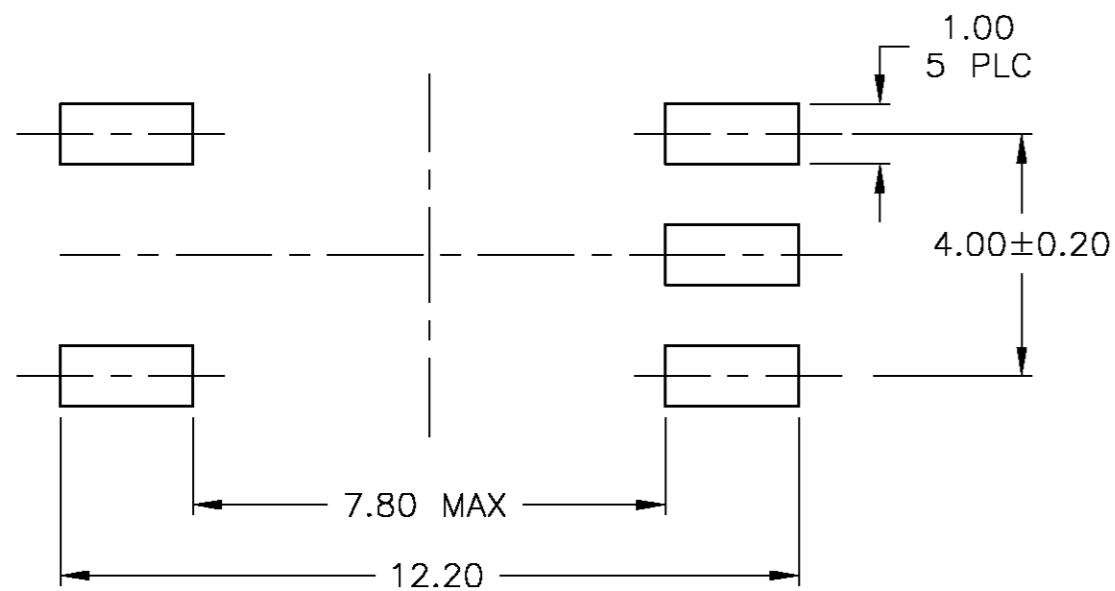
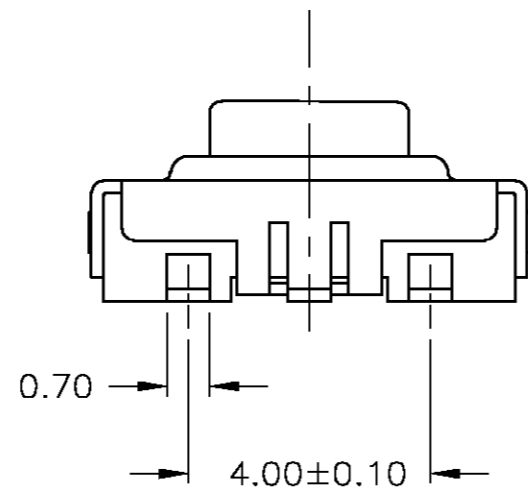
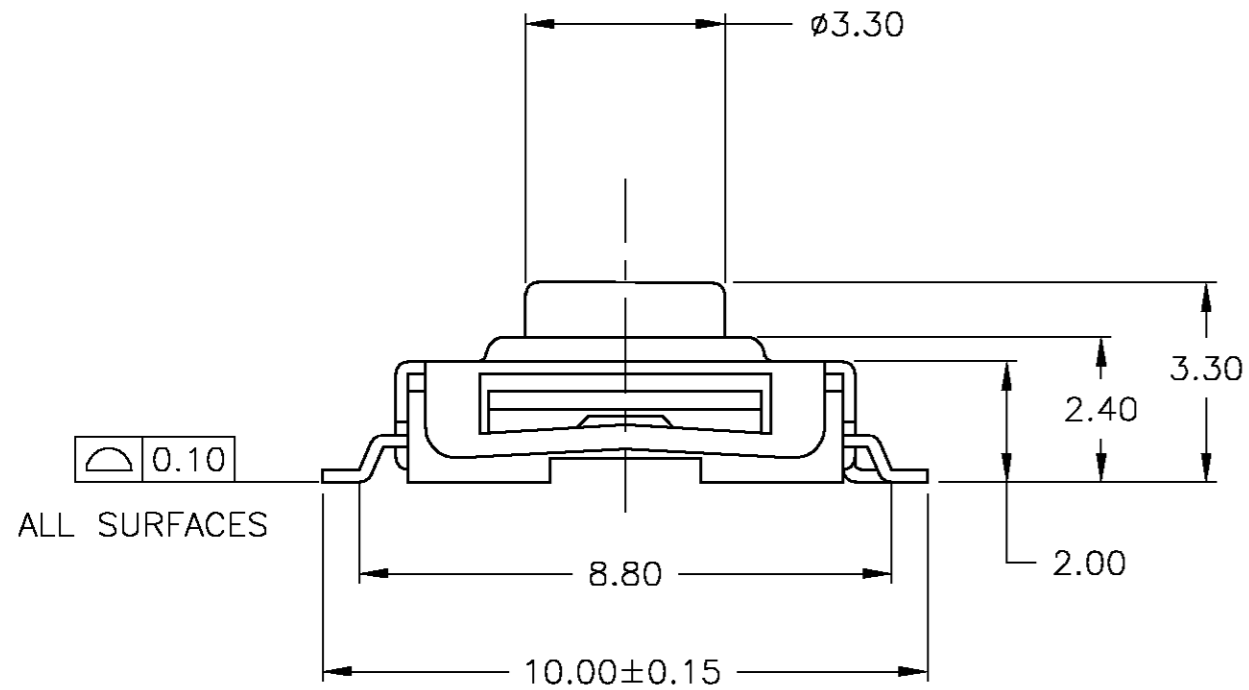
DURABILITY

UP TO 1,000,000 CYCLES, AT RATED LOAD PER EIA-RS-448, METHOD 8
 FINAL CONTACT RESISTANCE: 200 MILLIOHMS MAX
 CONTACT BOUNCE: 20 MILLISECONDS MAX
 ACTUATOR FORCE: WITHIN ±30% OF INITIAL VALUE

ENVIRONMENTAL

OPERATING TEMPERATURE RANGE: -20°C to +70°C, 45% - 85% RH
 STORAGE TEMPERATURE RANGE: -20°C to +70°C
 HUMIDITY: 96 HOURS PER EIA-186-1E
 INSULATION RESISTANCE: 10 MEGOHMS MIN
 DIELECTRIC STRENGTH: 250VAC
 CONTACT RESISTANCE: 100 MILLIOHMS MAX
 DRY HEAT TEST: 85°C FOR 96 HOURS PER IEC 60068-2-2, TEST B,
 NO CHANGE IN INITIAL ELECTRICAL AND MECHANICAL CHARACTERISTICS
 COLD TEST: -25°C FOR 96 HOURS PER IEC 60068-2-1, TEST A;
 NO CHANGE IN INITIAL ELECTRICAL AND MECHANICAL CHARACTERISTICS
 THERMAL CYCLING: 5 CYCLES, -30°C to +85°C
 HUMIDITY-TEMPERATURE CYCLING, EIA 364-31B, METHOD III
 CONTACT RESISTANCE 100 MILLIOHMS MAX
 RESISTANCE TO SOLDERING HEAT:
 EIA 364-56, PROCEDURE 4, AND PROCEDURE 5, LEVEL 3
 1. NO CHANGE IN INITIAL ELECTRICAL AND MECHANICAL CHARACTERISTICS
 2. SEALING PER IP67 - CONTACT RESISTANCE 100 MILLIOHMS MAX

SOLDERABILITY: PER EIA RS-186-9E



P.C.B MOUNTING SOLDER LAND DIMENSION

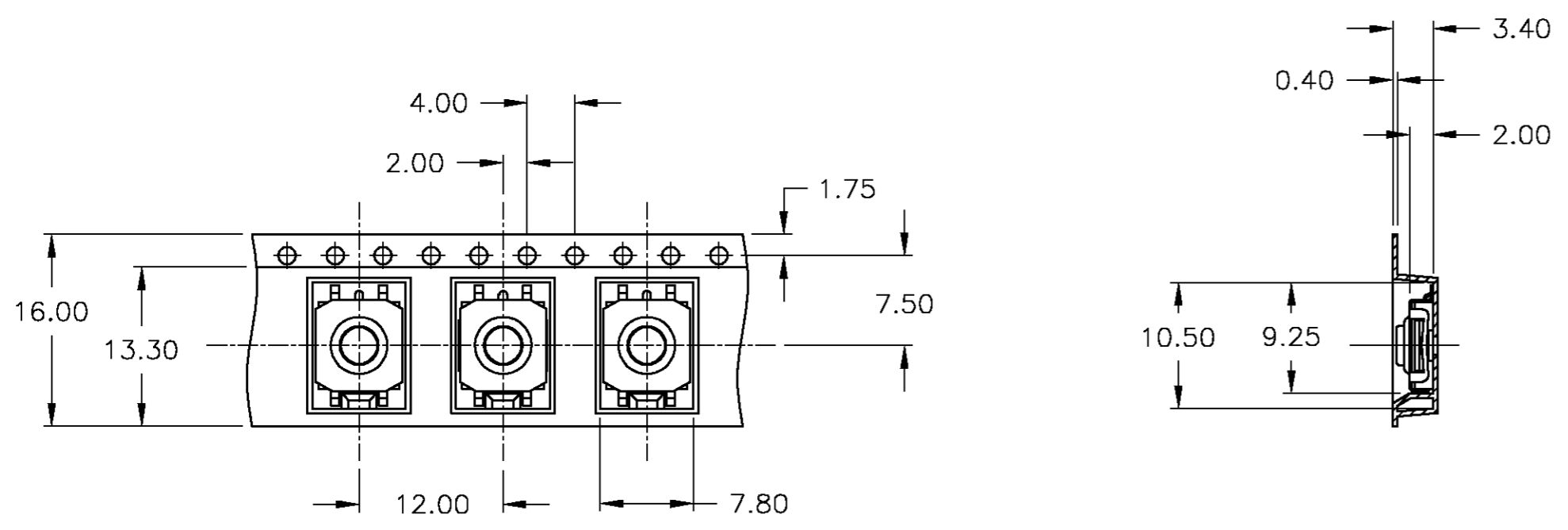
1 PACKAGE ON TAPE AND REEL PER EIA-481

1	TAPE AND REEL	160±50gf	1571296-2
	BULK	160±50gf	1571296-1
	PACKAGING	OPERATING FORCE	TYCO PART NUMBER

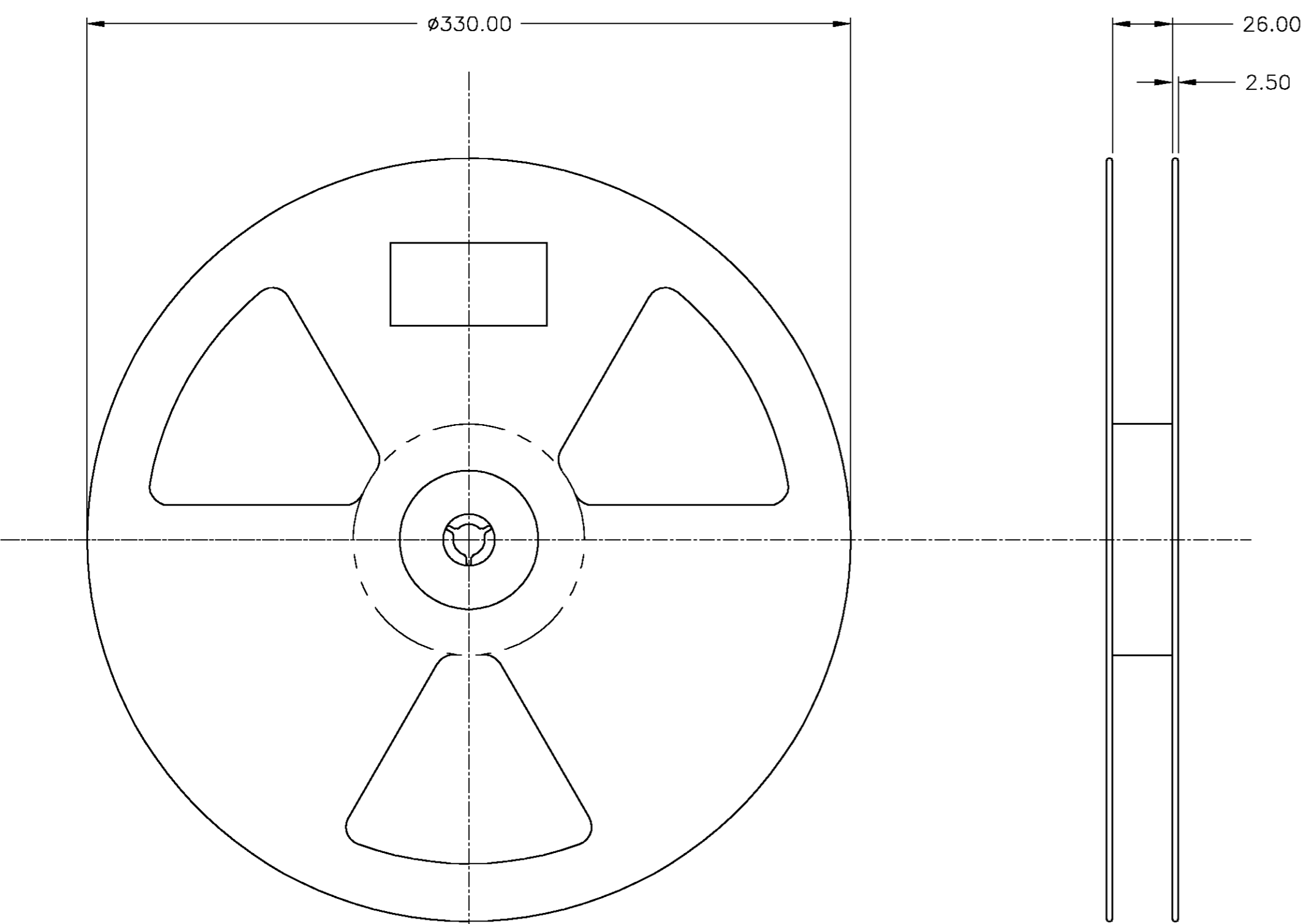
THIS DRAWING IS A CONTROLLED DOCUMENT.		DWN R BROWN 24APR02	Tyco Electronics Corporation Harrisburg, PA 17105	
DIMENSIONS: MM	TOLERANCES UNLESS OTHERWISE SPECIFIED:	CHK H WYNKOOP 24APR02	NAME SWITCH ASSEMBLY, TACTILE, 6mm SEALED, SMT	
	0 PLC ± -	APVD H WYNKOOP 24APR02	SIZE A2	CAGE CODE 00779
	1 PLC ± -	PRODUCT SPEC	DRAWING NO C=1571296	RESTRICTED TO -
	2 PLC ± 0.20	APPLICATION SPEC	SCALE 8:1	SHEET 1 OF 2
	3 PLC ± -		REV D	
	4 PLC ± -			
MATERIAL -	FINISH -	WEIGHT -	CUSTOMER DRAWING	

THIS DRAWING IS UNPUBLISHED. RELEASED FOR PUBLICATION
 © COPYRIGHT BY TYCO ELECTRONICS CORPORATION. ALL RIGHTS RESERVED.

LOC	DIST	REVISIONS			
P	LTR	DESCRIPTION	DATE	DWN	APVD
AD	00	SEE SHEET 1	-	-	-



STRIP DIMENSIONS
SCALE 2:1



REEL DIMENSIONS
SCALE 1:2

THIS DRAWING IS A CONTROLLED DOCUMENT.		DWN	R BROWN	24APR02	 Tyco Electronics Corporation Harrisburg, PA 17105
DIMENSIONS: MM		CHK	H WYNKOOP	24APR02	
TOLERANCES UNLESS OTHERWISE SPECIFIED:		APVD	H WYNKOOP	24APR02	
0 PLC ± - 1 PLC ± - 2 PLC ± 0.20 3 PLC ± - 4 PLC ± - ANGLES ± - FINISH -		PRODUCT SPEC	NAME		
MATERIAL		APPLICATION SPEC		SWITCH ASSEMBLY, TACTILE, 6mm, SEALED, SMT	
		WEIGHT	A2 00779		RESTRICTED TO
		CUSTOMER DRAWING		SCALE 8:1	SHEET 2 OF 2
				DRAWING NO C=1571296	REV D