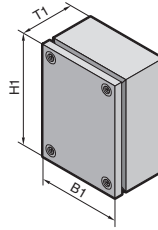


# Terminal boxes KL

without gland plate, depth: 80



Terminal boxes KL

1.1 B

**Material:**  
Enclosure: Sheet steel 1.25 mm  
Cover: Sheet steel 1.25 mm

**Surface finish:**  
Enclosure and cover:  
Dipcoat-primed,  
powder-coated in textured  
RAL 7035 on the outside

**Protection category:**  
IP 66 to EN 60 529/09.2000,  
complies with NEMA 4.

**Supply includes:**  
Enclosure, cover with all-round  
foamed-in PU seal and quick-  
action screws, including plastic  
bushes.

**Approvals,**  
see page 25.

**Detailed drawing,**  
see page 1175.

Width (B1) mm	Packs of	150	200	200	300	300	400	600	Page
Height (H1) mm		150	150	200	150	200	200	200	
Depth (T1) mm		80	80	80	80	80	80	80	
<b>Model No. KL</b>	<b>1</b>	<b>1514.510</b>	<b>1528.510</b>	<b>1516.510</b>	<b>1515.510</b>	<b>1517.510</b>	<b>1518.510</b>	<b>1519.510</b>	
Weight (kg)		1.4	1.6	1.9	2.1	2.6	3.2	4.6	

<b>Accessories</b>									
Mounting plate	1	1560.700	1575.700	1562.700	1561.700	1563.700	1564.700	1566.700	978
Support rail TS 35/7.5	10	2314.000	2315.000	2315.000	2316.000	2316.000	2317.000	–	1002
Support rail TS 35/15	10	–	–	–	–	–	–	2319.000	1002
Cover retainer	3 pairs	1591.000	1591.000	1591.000	1591.000	1591.000	1591.000	1591.000	962
Cover hinge	6	1592.000	1592.000	1592.000	1592.000	1592.000	1592.000	1592.000	962
Earthing set	5	2570.100	2570.100	2570.100	2570.100	2570.100	2570.100	2570.100	1036

To order terminal boxes in textured RAL 7032 please add extension .210 to the Model No., and for primed terminal boxes use extension .310.  
Delivery times available on request.



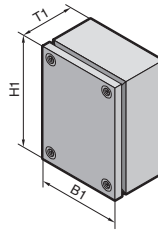
**Double-membrane gland,  
stepped collar** for cable entry,  
Model No. see page 1058.



**Earthing set for KL,**  
comprising all the parts needed  
for earthing of the cover.  
Model No. see page 1036.

# Terminal boxes KL

without gland plate, depth: 120



**Material:**

Enclosure: Sheet steel 1.25 mm;  
1.38 mm for KL 1507.510 to  
KL 1513.510  
Cover: Sheet steel 1.25 mm

**Surface finish:**

Enclosure and cover:  
Dipcoat-primed,  
powder-coated in textured  
RAL 7035 on the outside

**Protection category:**

IP 66 to EN 60 529/09.2000,  
complies with NEMA 4.

**Supply includes:**

Enclosure, cover with all-round  
foamed-in PU seal and quick-  
action screws, including plastic  
bushes.

**Approvals,**  
see page 25.

**Detailed drawing,**  
see page 1175.

Terminal boxes KL  
**B**  
**1.1**

<b>Width (B1) mm</b>	Packs of	150	200	200	300	300	300	400	400	400	400	Page
<b>Height (H1) mm</b>		150	150	200	150	200	300	150	200	300	400	
<b>Depth (T1) mm</b>		120	120	120	120	120	120	120	120	120	120	
<b>Model No. KL</b>	1	<b>1500.510</b>	<b>1529.510</b>	<b>1502.510</b>	<b>1501.510</b>	<b>1503.510</b>	<b>1507.510</b>	<b>1589.510</b>	<b>1504.510</b>	<b>1508.510</b>	<b>1511.510</b>	
Weight (kg)		1.6	1.8	2.3	2.6	3.0	4.0	3.2	3.6	4.8	6.2	

**Accessories**

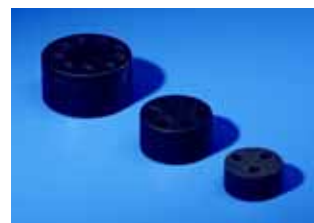
Mounting plate	1	1560.700	1575.700	1562.700	1561.700	1563.700	1567.700	1576.700	1564.700	1568.700	1571.700	978
Support rail TS 35/7.5	10	2314.000	2315.000	2315.000	2316.000	2316.000	2316.000	2317.000	2317.000	2317.000	2317.000	1002

<b>Width (B1) mm</b>	Packs of	500	500	600	600	600	800	800	Page
<b>Height (H1) mm</b>		200	300	200	300	400	200	400	
<b>Depth (T1) mm</b>		120	120	120	120	120	120	120	
<b>Model No. KL</b>	1	<b>1505.510</b>	<b>1509.510</b>	<b>1506.510</b>	<b>1510.510</b>	<b>1512.510</b>	<b>1527.510</b>	<b>1513.510</b>	
Weight (kg)		4.4	5.8	5.7	6.8	8.4	6.8	11.0	

**Accessories**

Mounting plate	1	1565.700	1569.700	1566.700	1570.700	1572.700	1574.700	1573.700	978
Support rail TS 35/15	10	2318.000	2318.000	2319.000	2319.000	2319.000	-	-	1002
Cover retainer	3 pairs	1591.000	1591.000	1591.000	1591.000	1591.000	1591.000	1591.000	962
Cover hinge	6	1592.000	1592.000	1592.000	1592.000	1592.000	1592.000	1592.000	962
Earthing set	5	2570.100	2570.100	2570.100	2570.100	2570.100	2570.100	2570.100	1036

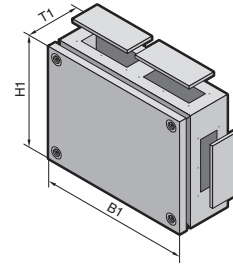
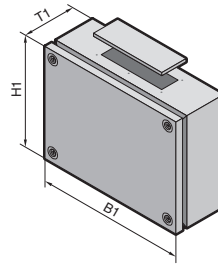
To order terminal boxes in textured RAL 7032 please add extension .210 to the Model No., and for primed terminal boxes use extension .310.  
Delivery times available on request.



**Cable glands, reducers and multi-seal inserts,**  
Model No. see page 1054 –  
1055.

# Terminal boxes KL

with gland plate, depth: 120



Terminal boxes KL

**Material:**  
Enclosure: Sheet steel 1.38 mm;  
1.25 mm for KL 1530.510 to  
KL 1534.510 and KL 1542.510  
Cover: Sheet steel 1.25 mm

**Surface finish:**  
Enclosure and cover: Dipcoat-  
primed, powder-coated on the  
outside in textured RAL 7035

**Protection category:**  
IP 55 to EN 60 529/09.2000,  
complies with NEMA 12.

**Supply includes:**  
Enclosure with gland apertures,  
cover with foamed-in special  
seal and quick-action screws  
including plastic bushes,  
sheet steel gland plates with  
seals and assembly parts.

**Approvals,**  
see page 25.

**Detailed drawing,**  
see page 1175.

Width (B1) mm	Packs of	300	300	300	400	400	400	Page
Height (H1) mm		150	200	300	200	300	400	
Depth (T1) mm		120	120	120	120	120	120	
Model No. KL	1	<b>1530.510</b>	<b>1531.510</b>	<b>1535.510</b>	<b>1532.510</b>	<b>1536.510</b>	<b>1539.510</b>	
Weight (kg)		2.7	3.3	4.5	4.0	5.2	6.7	

**Accessories**

Mounting plate	1	1561.700	1563.700	1567.700	1564.700	1568.700	1571.700	978
Gland plate (top + bottom)	Size	2	2	2	2	2	2	from 1048
	Qty.	1 + 1	1 + 1	1 + 1	1 + 1	1 + 1	1 + 1	
Gland plate (left + right)	Size	-	-	2	-	2	2	from 1048
	Qty.	-	-	1 + 1	-	1 + 1	1 + 1	
Support rail TS 35/7.5	10	2316.000	2316.000	2316.000	2317.000	2317.000	2317.000	1002

Width (B1) mm	Packs of	500	500	600	600	600	800	800	Page
Height (H1) mm		200	300	200	300	400	200	400	
Depth (T1) mm		120	120	120	120	120	120	120	
Model No. KL	1	<b>1533.510</b>	<b>1537.510</b>	<b>1534.510</b>	<b>1538.510</b>	<b>1540.510</b>	<b>1542.510</b>	<b>1541.510</b>	
Weight (kg)		4.9	5.2	5.9	7.7	9.0	7.2	12.0	

**Accessories**

Mounting plate	1	1565.700	1569.700	1566.700	1570.700	1572.700	1574.700	1573.700	978
Gland plate (top + bottom)	Size	2	2	2	2	2	2	2	from 1048
	Qty.	2 + 2	2 + 2	2 + 2	2 + 2	2 + 2	3 + 3	3 + 3	
Gland plate (left + right)	Size	-	2	-	2	2	-	2	from 1048
	Qty.	-	1 + 1	-	1 + 1	1 + 1	-	1 + 1	
Support rail TS 35/15	10	2318.000	2318.000	2319.000	2319.000	2319.000	-	-	1002
Cover retainer	3 pairs	1591.000	1591.000	1591.000	1591.000	1591.000	1591.000	1591.000	962
Cover hinge	6	1592.000	1592.000	1592.000	1592.000	1592.000	1592.000	1592.000	962
Earthing set	5	2570.100	2570.100	2570.100	2570.100	2570.100	2570.100	2570.100	1036

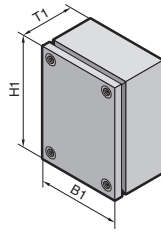
To order terminal boxes in textured RAL 7032 please add extension .210 to the Model No., and for primed terminal boxes use extension .310. Delivery times available on request.



**Cover hinge**  
The cover hinge is simply  
screwed to the enclosure  
protection channel and to the  
bottom edge of the cover.  
Model No. see page 962.



**Cover retainer**  
The cover retainer is easily fitted  
without drilling, and allows the  
covers to be opened upwards,  
even when the terminal box  
below is bayed.  
Model No. see page 962.



**Material:**

Stainless steel  
Enclosure: 1.25 mm  
Cover: 1.25 mm

**Surface finish:**

Enclosure and cover:  
Brushed, grain 180

**Protection category:**

IP 66 to EN 60 529/09.2000,  
complies with NEMA 4x.

**Supply includes:**

Enclosure, cover with all-round  
foamed-in PU-seal and quick-  
action screws, including plastic  
bushes.

**Approvals,**

see page 25.

**Detailed drawing,**

see page 1175.

Width (B1) mm	Packs of	150	300	200	300	400	300	Page
Height (H1) mm		150	150	200	200	200	300	
Depth (T1) mm		80	80	80	80	120	120	
<b>Model No. KL</b>	1.4301 (AISI 304) with PU seal	1	<b>1521.010</b>	<b>1522.010</b>	<b>1523.010</b>	<b>1524.010</b>	<b>1525.010</b>	<b>1526.010</b>
	1.4301 (AISI 304) with silicone seal	1	<b>1521.020<sup>1)</sup></b>	<b>1522.020<sup>1)</sup></b>	<b>1523.020<sup>1)</sup></b>	<b>1524.020<sup>1)</sup></b>	<b>1525.020<sup>1)</sup></b>	<b>1526.020<sup>1)</sup></b>
	1.4404 (AISI 316L) with PU seal	1	<b>1521.510<sup>1)</sup></b>	<b>1522.510<sup>1)</sup></b>	<b>1523.510<sup>1)</sup></b>	<b>1524.510<sup>1)</sup></b>	<b>1525.510<sup>1)</sup></b>	<b>1526.510<sup>1)</sup></b>
	1.4404 (AISI 316L) with silicone seal	1	<b>1521.520<sup>1)</sup></b>	<b>1522.520<sup>1)</sup></b>	<b>1523.520<sup>1)</sup></b>	<b>1524.520<sup>1)</sup></b>	<b>1525.520<sup>1)</sup></b>	<b>1526.520<sup>1)</sup></b>
Weight (kg)		1.3	1.8	1.8	2.4	3.6	3.9	
Cover screws		4	4	4	4	4	4	
<b>Accessories</b>								
Mounting plate	1	1560.700	1561.700	1562.700	1563.700	1564.700	1567.700	978
Wall mounting bracket	4	1594.000	1594.000	1594.000	1594.000	1594.000	1594.000	975
Wall angle	1	2583.000	2583.000	2583.000	2583.000	2583.000	2583.000	976
Pole clamp	1	2584.000	2584.000	2584.000	2584.000	2584.000	2584.000	976
Support rails TS 35/7.5	10	2314.000	2316.000	2315.000	2316.000	2317.000	2316.000	1002
Cover hinge, stainless steel 1.4404	2	1592.010	1592.010	1592.010	1592.010	1592.010	1592.010	962
Pressure relief stopper	5	2459.500	2459.500	2459.500	2459.500	2459.500	2459.500	916

<sup>1)</sup> Delivery times available on request.



**Wall mounting bracket**  
for secure attachment to the  
wall.  
Model No. see page 975.

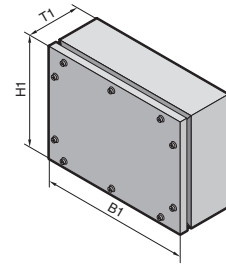
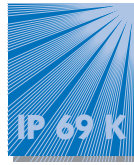


**Housing coupling**  
for attaching the 120 mm deep  
KL to the support arm system.  
Model No. see page 314.

# Stainless steel

## Premium Line KL, protection category IP 69K

1.6 B  
Stainless steel



The correct solution in cases where high-pressure cleaning is a priority.

- **Resistant to high-pressure cleaning** (protection category IP 69K). The seal lies between two surfaces and is optimally compressed by the screw fastening.
- **Suitable for clean room use.** Optional screw fastening to comply with high standards in the food industry:
  - 1 external with hex screws,
  - 2 internal with plastic bungs.

- **Optimum EMC conditions.** The labyrinth seal achieves a particularly high level of RF shielding of the enclosure.
- **Accessibility.** Internal rear panel bracket. This solution is clearly superior to external hinges from a hygiene point of view.
- Wall mounting can be implemented directly from the rear using M8 pull-in nuts, or from the front using wall mounting brackets.

**Material:**  
Stainless steel, 1.5 mm

**Surface finish:**  
Brushed, grain 240

**Protection category:**  
IP 69K to DIN 40 050-9



**Rittal service:**

Other sizes and other enclosures with this sealing concept are available on request. Cut-outs and drilled holes to your specifications.

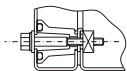
**Detailed drawing,** see page 1221.

Width (B1) mm	Packs of	150	150	300	400	Page
Height (H1) mm		150	150	200	300	
Depth (T1) mm		80	120	120	120	
Model No. KL	1.4301 (AISI 304)	1	<b>1024.010</b>	<b>1024.020</b>	<b>1024.030</b>	<b>1024.040</b>
	1.4404 (AISI 316L)	1	<b>1024.510<sup>1)</sup></b>	<b>1024.520<sup>1)</sup></b>	<b>1024.530<sup>1)</sup></b>	<b>1024.540<sup>1)</sup></b>
Number of lid screws		4	4	6	10	
<b>Accessories</b>						
Mounting plate	1	1024.910	1024.910	1024.920	1024.930	978
Wall mounting bracket	4	1594.000	1594.000	1594.000	1594.000	975
Wall angle	1	2583.000	2583.000	2583.000	2583.000	976
Rear panel bracket	2	6682.000	6682.000	6682.000	6682.000	962

<sup>1)</sup> Delivery times available on request.



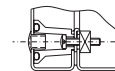
1



Depending on customer requirements, screw head on the outside . . .



2

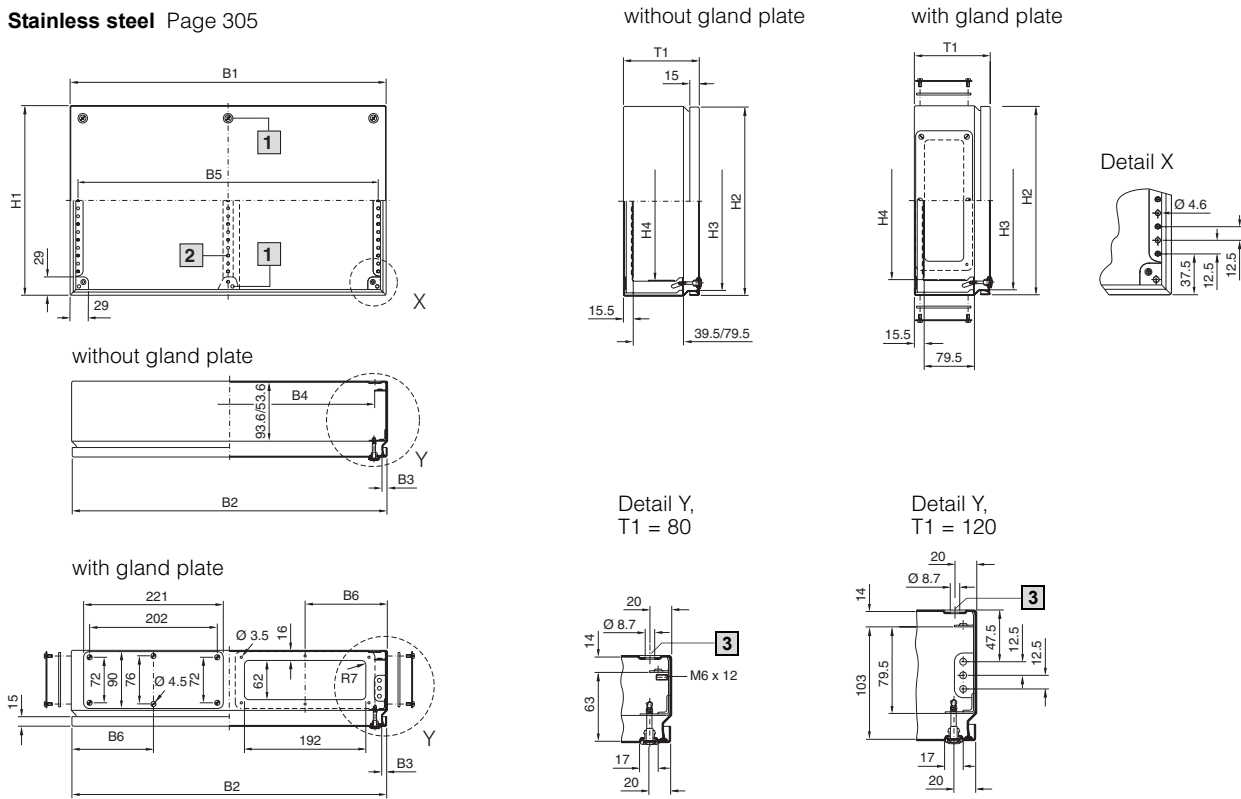


. . . or plastic stoppers on the outside with concealed screws (included in the supply).

### 1.1 Terminal boxes KL

**Spray-finished** Page 116 – 118

**Stainless steel** Page 305



B1 = Overall width  
 B2 = Cover width  
 B3 = Clearance width of enclosure  
 B4 = Clearance frame/width between profile strips  
 B5 = Distance between axes of the mounting holes in the profile strips  
 B6 = Distance from outer edge of enclosure – centre of gland plate

H1 = Overall height  
 H2 = Cover height  
 H3 = Clearance height of enclosure  
 H4 = Clearance frame/height between profile strips

T1 = Overall depth

- 1 Only with  $W \geq 600$  mm
- 2 Only with  $W = 800$  mm
- 3 Drilled hole does not apply to stainless steel version

Model No. KL			Width dimensions mm						Height dimensions mm				Depth dimensions mm
without gland plate	with gland plate	Stainless steel without gland plate	B1	B2	B3	B4	B5	B6	H1	H2	H3	H4	T1
1514.510	-	1521.XX0	150	148	132	109	125	-	150	148	132	-	80
1528.510	-	-	200	198	182	159	175	-	150	148	132	-	80
1516.510	-	1523.XX0	200	198	182	159	175	-	200	198	182	-	80
1515.510	-	1522.XX0	300	298	282	259	275	-	150	148	132	-	80
1517.510	-	1524.XX0	300	298	282	259	275	-	200	198	182	-	80
1518.510	-	-	400	398	382	359	375	-	200	198	182	-	80
1519.510	-	-	600	598	582	559	575	-	200	198	182	-	80
1500.510	-	-	150	148	132	109	125	-	150	148	132	100	120
1529.510	-	-	200	198	182	159	175	-	150	148	132	100	120
1502.510	-	-	200	198	182	159	175	-	200	198	182	150	120
1501.510	1530.510	-	300	298	282	259	275	150	150	148	132	100	120
1503.510	1531.510	-	300	298	282	259	275	150	200	198	182	150	120
1507.510	1535.510	1526.XX0	300	298	282	259	275	150	300	298	282	250	120
1589.510	-	-	400	398	382	359	375	-	150	148	132	100	120
1504.510	1532.510	1525.XX0	400	398	382	359	375	200	200	198	182	150	120
1508.510	1536.510	-	400	398	382	359	375	200	300	298	282	250	120
1511.510	1539.510	-	400	398	382	359	375	200	400	398	382	350	120
1505.510	1533.510	-	500	498	482	459	475	130	200	198	182	150	120
1509.510	1537.510	-	500	498	482	459	475	130	300	298	282	250	120
1506.510	1534.510	-	600	598	582	559	575	150	200	198	182	150	120
1510.510	1538.510	-	600	598	582	559	575	150	300	298	282	250	120
1512.510	1540.510	-	600	598	582	559	575	150	400	398	382	350	120
1527.510	1542.510	-	800	798	782	759	775	150	200	198	182	150	120
1513.510	1541.510	-	800	798	782	759	775	150	400	398	382	350	120