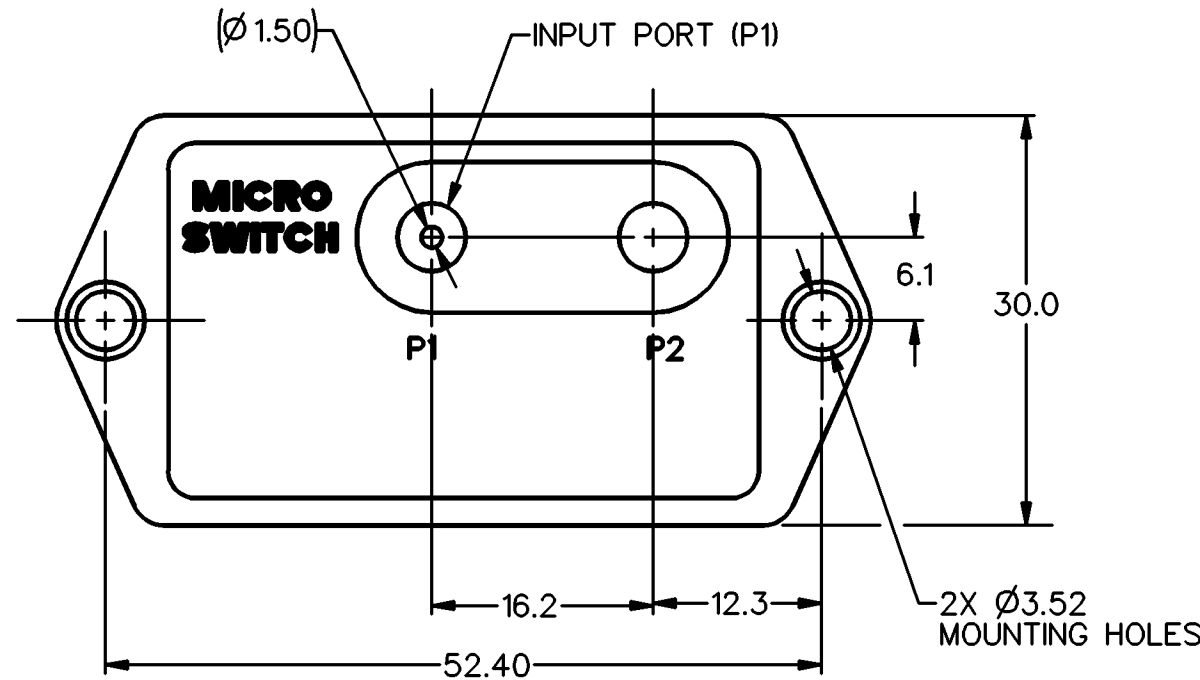
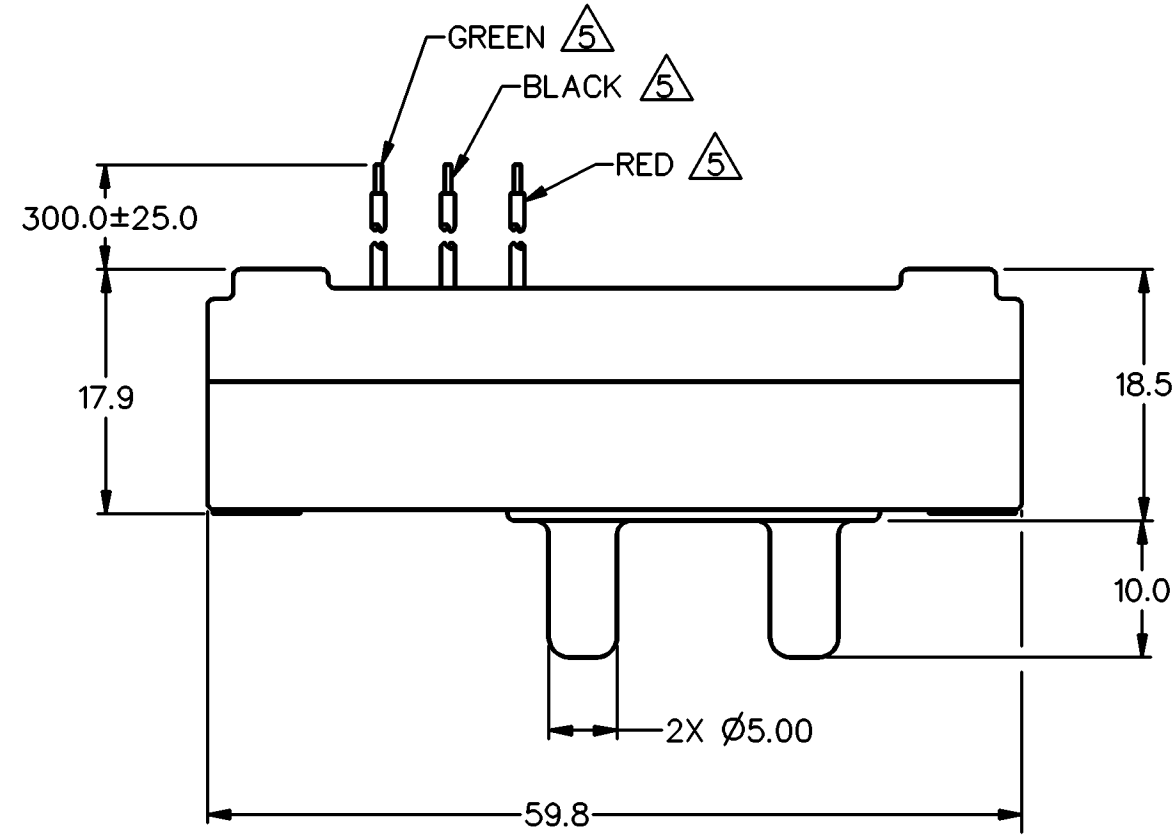
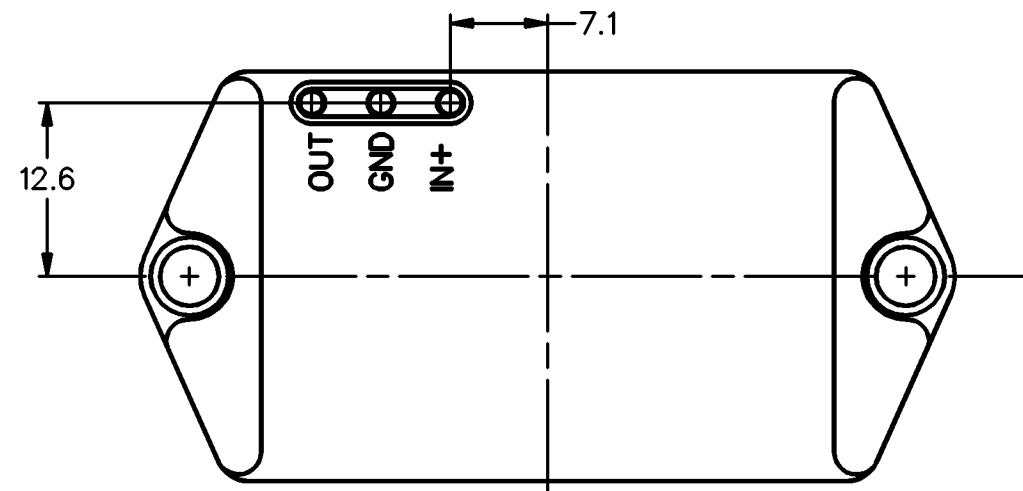


HONEYWELL
PART NUMBER
142PC95AW71

REV	DOCUMENT	CHANGED BY	CHECK
C	0072603	BM 21DEC10	DSK



METRIC	INCHES
1.50	.059
3.52	.139
5.00	.197
6.1	.240
7.1	.280
10.0	.39
12.3	.484
12.6	.496
16.2	.64
17.9	.70
18.5	.73
30.0	1.18
52.40	2.063
59.8	2.35
300.0±25.0	11.81±.98

GENERAL OPERATING CHARACTERISTICS

PRESSURE RANGE	0 TO 95 PSIA
OVERPRESSURE	140 PSIA MAX AT 55°C
TEMPERATURE RANGES	STORAGE -55 TO +125°C
	OPERATE 5 TO 55°C
	COMPENSATED 5 TO 45°C
SUPPLY VOLTAGE	7 TO 16 VDC
SUPPLY CURRENT	20mA MAX WITH 10K LOAD
OUTPUT VOLTAGE	PROPORTIONAL TO SUPPLY VOLTAGE OVER ABOVE RECOMMENDED RANGE
SHORT CIRCUIT LIMIT	MAY BE SHORTED INDEFINITELY
OUTPUT RIPPLE	NONE
GROUND REFERENCE	SUPPLY AND OUTPUT ARE COMMON
MECHANICAL SHOCK	MIL-STD-202 METHOD 213 TEST CONDITION A
VIBRATION SINE SWEEP	MIL-STD-202 METHOD 204

ELECTRICAL PERFORMANCE AT 25°C AND 8.00±.01 VDC SUPPLY

OUTPUT VOLTAGE	
NULL (0 PSIA)	1.000 VDC TYP
REFERENCE (14.7 PSIA)	1.773±0.050 VDC
FULL SCALE (95 PSIA)	6.000 VDC TYP P1 > P2
SPAN (2 TO 95 PSIA)	4.227±.150 VDC
SENSITIVITY	52.63 mV/PSI TYP
LINEARITY (B.F.S.L.)	.89% SPAN MAX
HYSTERESIS & REPEATABILITY	.18% SPAN TYP
TEMPERATURE ERROR	
+5°C TO +45°C	1.77% SPAN MAX

RELEASE NO: PR-17830

- NOTES
- 1 - INPUT MEDIA:
P1 - DRY GASES ONLY: CONNECTION SIDE OF SENSOR
 - 2 - TERMINALS ARE PLATED FOR SOLDERING
 - 3 - LIMIT SOLDERING TO 315°C MAX FOR 10 SECONDS MAX
 - 4 - UNITS ARE OF PLASTIC CONSTRUCTION
 - 5 - STRIPPED & TINNED LEAD ENDS TO BE 5.0 MAX
 - 6 - NO CHANGE TO MATERIALS WITHOUT VALIDATION AT 125 PSI AT OPERATING TEMPERATURES.

DESIGN UNITS: MM
TOLERANCES UNLESS NOTED:

NO PLACES	X	±	1
ONE PLACE	.X	±	0.4
TWO PLACE	.XX	±	0.15
THREE PLACE	.XXX	±	-
ANGLES	X	±	-

THIRD ANGLE PROJECTION

DRAWN	MBH	13JUL09
CHECK	AK	13JUL09
THIS DRAWING COVERS A PROPRIETARY ITEM AND IS THE PROPERTY OF HONEYWELL. THIS DRAWING IS NOT TO BE COPIED OR USED WITHOUT THE PERMISSION OF HONEYWELL.		
INTERPRET PER ASME Y14.5M-1994 OTHER HONEYWELL ENGINEERING STANDARDS MAY APPLY		
RASTER		

Honeywell				
TITLE PRESSURE TRANSDUCER				
SIZE	TYPE	CAGE CODE	DRAWING NAME	REV
A3	I	-	142PC95AW71	C
SCALE	-	SHEET	1	OF 1