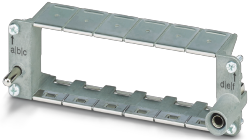



Module carrier frame - HC-M-B24-MF-B - 1417402

Please be informed that the data shown in this PDF Document is generated from our Online Catalog. Please find the complete data in the user's documentation. Our General Terms of Use for Downloads are valid (<http://phoenixcontact.com/download>)

Module carrier frame, size: B24, type : for the panel mounting side (a, b, c, ...), 4 mm² ... 6 mm², application: Module carrier frame



Key Commercial Data

Packing unit	1 pc
GTIN	 4 055626 112770
GTIN	4055626112770
Weight per Piece (excluding packing)	95.000 g
Custom tariff number	85389099
Country of origin	China

Technical data

Dimensions

Height	36.2 mm
Width	34.5 mm
Length	111 mm

Ambient conditions

Ambient temperature (operation)	-40 °C ... 125 °C
---------------------------------	-------------------

Mechanical characteristics

Conductor cross section	4 mm ² ... 6 mm ² (for PE conductor - power side)
	1 mm ² ... 2.5 mm ² (for PE conductor - control side)
Connection cross section AWG	12 ... 10 (for PE conductor - power side)
	18 ... 14 (for PE conductor - control side)

Module carrier frame - HC-M-B24-MF-B - 1417402

Technical data

Mechanical characteristics

Tightening torque	0.8 Nm ... 1.2 Nm (for PE conductor - power side)
	0.5 Nm ... 0.8 Nm (for PE conductor – control side)
Insertion/withdrawal cycles	≥ 500

General

Type	for the panel mounting side (a, b, c, ...)
Size	B24
	B48
Series	HC-M-B
Color	silver
Number of module slots	6
Assembly instructions	HC-MHR-PE16 (1636981) for PE connection extension to 16 mm².
Connection	Use wire end protection for PE wires (PE connection screws without wire protection) for housings without lateral connectors, max. thread length of the screw connection 12 mm

Material data

Contact carrier material	Die-cast zinc alloy
--------------------------	---------------------

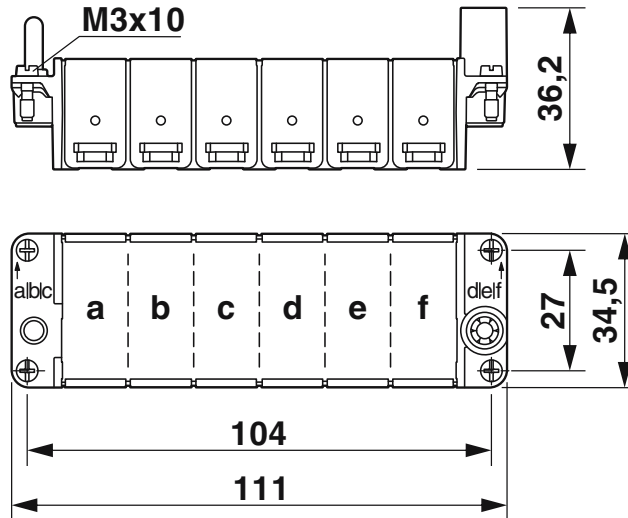
Environmental Product Compliance

REACH SVHC	Lead 7439-92-1
China RoHS	Environmentally Friendly Use Period = 50 years
	For details about hazardous substances go to tab "Downloads", Category "Manufacturer's declaration"

Drawings

Module carrier frame - HC-M-B24-MF-B - 1417402

Dimensional drawing



Dimensional drawing

Classifications

eCl@ss

eCl@ss 10.0.1	27440206
eCl@ss 11.0	27440206
eCl@ss 4.0	27140800
eCl@ss 4.1	27140800
eCl@ss 5.0	27143400
eCl@ss 5.1	27143400
eCl@ss 6.0	27261200
eCl@ss 7.0	27440206
eCl@ss 9.0	27440206

ETIM

ETIM 6.0	EC002312
ETIM 7.0	EC002312

UNSPSC

UNSPSC 13.2	31261501
UNSPSC 18.0	31261501
UNSPSC 19.0	31261501
UNSPSC 20.0	31261501
UNSPSC 21.0	31261501

Module carrier frame - HC-M-B24-MF-B - 1417402

Approvals

Approvals

Approvals

CSA / UL Recognized

Ex Approvals

Approval details

CSA		http://www.csagroup.org/services-industries/product-listing/	13631
-----	---	---	-------

UL Recognized		http://database.ul.com/cgi-bin/XYV/template/LISEXT/1FRAME/index.htm	E118976
---------------	--	---	---------

Accessories

Accessories

Coding element

Coding element - HC-CST-MOD - 1636127



Coding peg for coding up to 16 connectors, for HC Modular

Coding element - HC-CBU-MOD - 1636130



Coding socket for coding up to 16 connectors, for HC Modular

Mounting material

Module carrier frame - HC-M-B24-MF-B - 1417402

Accessories

Cable lug - HC-M-MHR-PE16 - 1636981



Cable lug for HEAVYCON-MODULAR; PE connection extension to 16 mm², for crimping with crimp pliers

Additional products

Module carrier frame - HC-M-B24-MF-H - 1417406



Module carrier frame, size: B24, type : for the sleeve side (A, B, C, ...), 4 mm² ... 6 mm², application: Module carrier frame