



**MICRO SWITCH**  
 FREEPORT, ILLINOIS, U.S.A.  
 A DIVISION OF HONEYWELL

FED. MFG. CODE 91929

# SWITCH-BASIC

CATALOG LISTING  
**13MN2**

X 37553  
 ISSUE 1

**13MN2**

**M**

DRAWING NUMBER

ISSUE

REPLACES

RELEASE NO. SR 12794

CHECK

5 APR 67

GPM

CHECK

5 APR 67

RAW

CHECK

5 APR 67

OMW

CHECK

4 APR 67

DRAWN

OMW

CHECK

4 APR 67

DRAWN

OMW

CHECK

4 APR 67

DRAWN

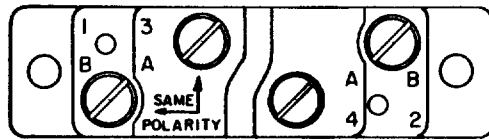
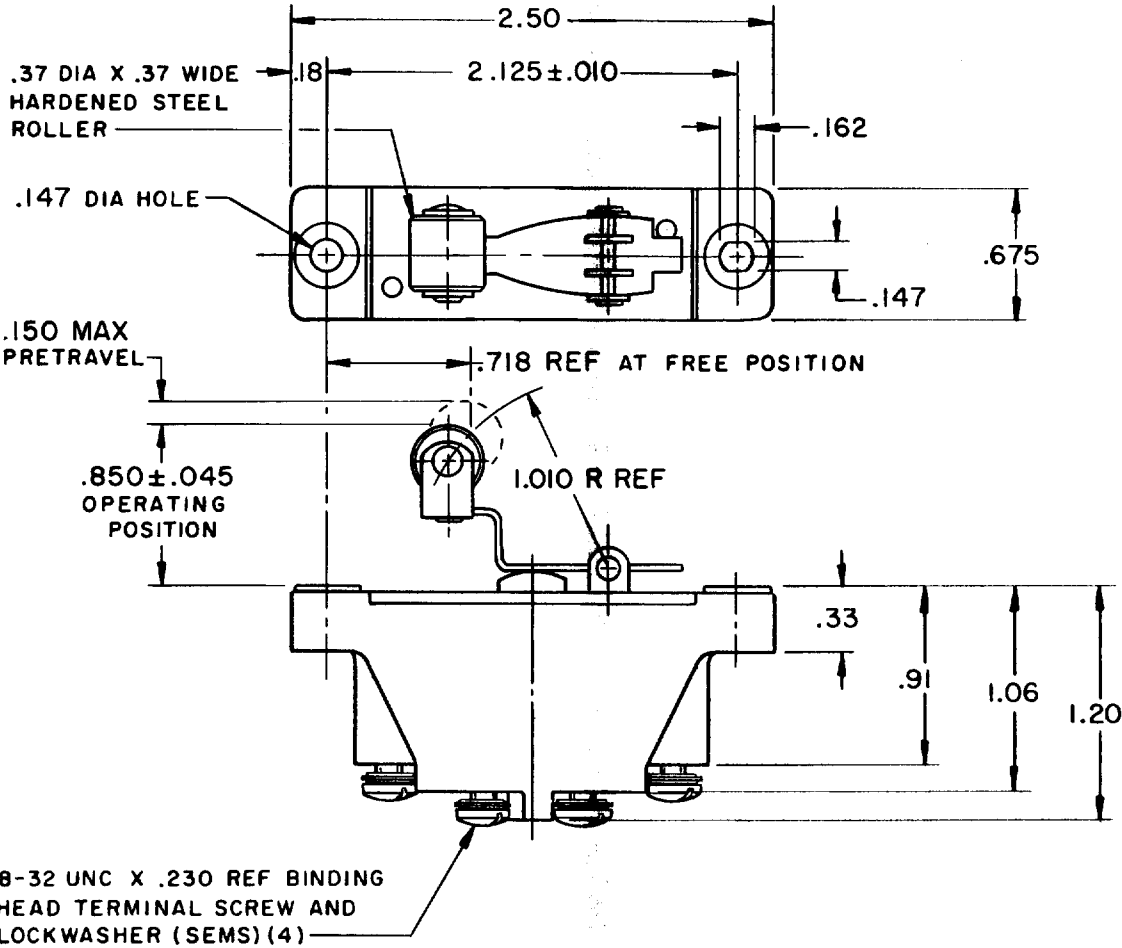
OMW

CHECK

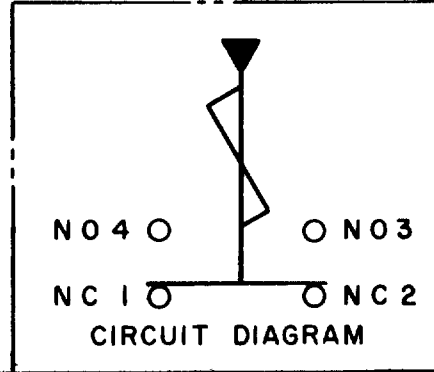
4 APR 67

DRAWN

OMW



NOTE -  
 1 - MOUNTING HOLES WILL ACCEPT PINS OR SCREWS OF .139 MAX DIA ON 2.125 ± .005 CENTERS



THIS DRAWING COVERS A PROPRIETARY ITEM AND IS THE PROPERTY OF MICRO SWITCH, A DIVISION OF HONEYWELL. THIS DRAWING IS NOT TO BE COPIED OR USED WITHOUT THE APPROVAL OF MICRO SWITCH.

**CHARACTERISTICS**

OPERATING FORCE ----- 3-7 OZ  
 RELEASE FORCE ----- 1 OZ MIN  
 DIFFERENTIAL TRAVEL ----- .025-.055  
 OVERTRAVEL ----- .100 MIN

**ELECTRICAL DATA**

CONTACT ARRANGEMENT  
 SEE CIRCUIT DIAGRAM

**SCALE FULL**

DO NOT SCALE PRINT

UNLESS OTHERWISE NOTED

DIMENSIONS ARE IN INCHES  
**TOLERANCES ARE:**  
 ONE PLACE (.0) ± .030  
 TWO PLACE (.00) ± .015  
 THREE PLACE (.000) ± .005  
 ANGLES ±

WEIGHT