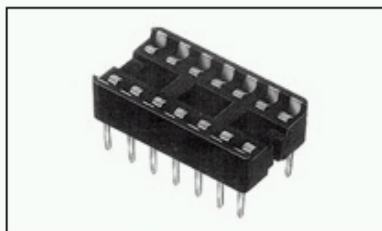
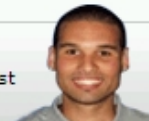


## 1-390262-2 Product Details

### Have a Question?

Chat with a Product Information Specialist



**1-390262-2**

TE Internal Number: 1-390262-2

Active

[View 3D PDF](#)

### DIP Sockets

[Always EU RoHS/ELV Compliant \(Statement of Compliance\)](#)

#### Product Highlights:

- Socket Style = Standard
- Through Hole Contact Termination Type
- 2.54 mm Centerline
- Row-to-Row Spacing = 15.24 mm
- 28 Positions

[View all Features](#)

### Quick Links

- ▶ [Check Pricing & Availability](#)
- ▶ [Search for Tooling](#)
- ▶ [Product Feature Selector](#)
- ▶ [Contact Us About This Product](#)

[Add to My Part List](#) [Request Sample](#) [Find Similar Products](#) [Buy Product](#)

### Documentation & Additional Information

#### Product Drawings:

- [DIP SOCKET, .600 CENTER LINE LADDER STYLE \(PDF, English\)](#)

#### Catalog Pages/Data Sheets:

- None Available

#### Product Specifications:

- None Available

#### Application Specifications:

- None Available

#### Instruction Sheets:

- None Available

#### CAD Files: ([CAD Format & Compression Information](#))

- [2D Drawing \(DXF, Version M\)](#)
- [3D Model \(IGES, Version M\)](#)
- [3D Model \(STEP, Version M\)](#)

#### Additional Information:

- [Product Line Information](#)

#### Related Products:

- [Tooling](#)

[List all Documents](#)

### Product Features (Please use the Product Drawing for all design activity)

#### Product Type Features:

- [Socket Style](#) = Standard
- Profile = Standard
- [Frame Style](#) = Ladder
- [Leg Style](#) = Straight
- PCB Mount Angle = Horizontal

#### Electrical Characteristics:

- Insulation Resistance (MΩ) = 10,000
- Contact Resistance (mΩ) = 30

#### Termination Related Features:

- [Termination Post Length \(mm \[in\]\)](#) = 3.00 [0.118]

#### Body Related Features:

- [Centerline \(mm \[in\]\)](#) = 2.54 [0.100]
- [Row-to-Row Spacing \(mm \[in\]\)](#) = 15.24 [0.600]
- [Number of Positions](#) = 28
- [Mount Style](#) = Vertical

#### Contact Related Features:

- [Contact Termination Type](#) = Through Hole
- [Contact Base Material](#) = Phosphor Bronze
- [Contact Plating, Mating Area, Material](#) = Tin
- [Contact Style](#) = Stamped + Formed
- [Mating Contact Type](#) = Dual Leaf

#### Configuration Related Features:

- [Height Above PC Board \(mm \[in\]\)](#) = 5.10 [0.200]

#### Industry Standards:

- [RoHS/ELV Compliance](#) = RoHS compliant, ELV compliant
- [Lead Free Solder Processes](#) = Wave solder capable to 240°C, Wave solder capable to 260°C, Wave solder capable to 265°C
- [RoHS/ELV Compliance History](#) = Always was RoHS compliant

#### Conditions for Usage:

- Temperature Range (°C) = -40 - +105

#### Packaging Related Features:

- [Packaging Method](#) = Tube

#### Other:

- Brand = AMP

BOOKMARK

### Corporate Information

[Who We Are](#)  
[Investors](#)  
[News Room](#)  
[Supplier Portal](#)  
[Careers](#)

### Quick Links

[Check Distributor Inventory](#)  
[Cross Reference](#)  
[Find Documents & Drawings](#)  
[Product Compliance Support Center](#)  
[Site Map](#)

### Customer Support

[Email or Chat with Us](#)  
[Find a Phone Number](#)  
[Search Knowledge Base](#)  
[Manage Your Account](#)

### Sign up for our eNewsletter

Enter your email address

Follow us on: