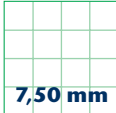
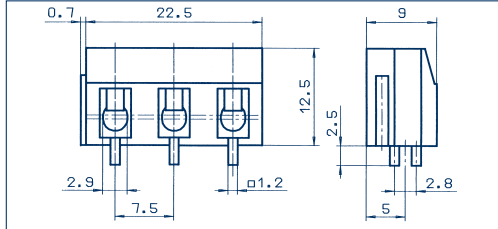
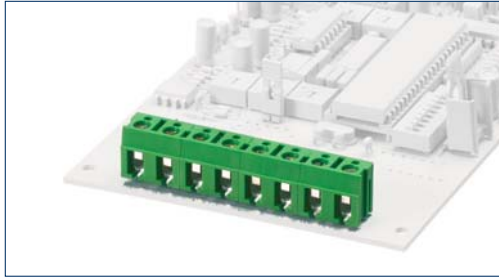


Terminals

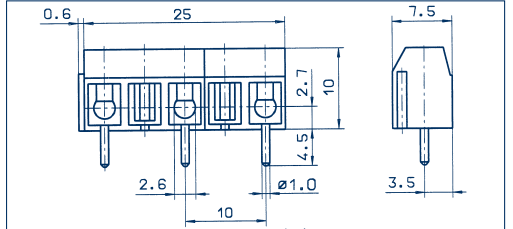
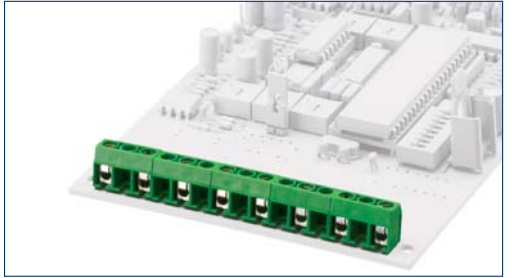


Drawings

PK 114/... /7,50-V vertical



PK 500/... /10,00-V vertical



Connection principle

Dimensions

Spacing mm	7,50
Insulation stripping length mm	7,00
PCB hole diameter mm	2,00 x 2,80

Connection data

Single wire (solid) mm ²	4,00
Stranded wire (flexible) mm ²	2,50
Stranded wire (with ferrules) mm ²	1,50

Rating

	300 V	500 V
Rated voltage V	300 V	500 V
Rated current A	15 A	32 A (T60)
Cross section max. AWG/mm ²	22-12	4,00
Rated surge voltage	–	3,00 kV
Rated torque/Screw size	–	0,80 Nm/M3
Contamination degree	–	–

Materials

Insulating material/Flammability class	PA 6.6 V0 / UL 94 V0
Temperature Range	-30°C / +105°C
Clamping part	CuZn
Clamping cage/Eccentric	–
Contact pin	–
Cage tension spring	–
Wire protection	stainless steel
Soldering lug	–
Contact Spring	–

Order information

Standard colour(s)
(further colours on request, see page 5)

Wire-protection

Spacing mm	7,50
Insulation stripping length mm	7,00
PCB hole diameter mm	2,00 x 2,80

	300 V	500 V
Rated voltage V	300 V	500 V
Rated current A	15 A	32 A (T60)
Cross section max. AWG/mm ²	22-12	4,00
Rated surge voltage	–	3,00 kV
Rated torque/Screw size	–	0,80 Nm/M3
Contamination degree	–	–

No. of poles

No. of poles	Cat.-No.		Qty.p.pck.
	● green (Ral 6018)	● dark grey (Ral 7016)	
2	10088.1	10088.4	50
3	10089.1	10089.4	50
4	10090.1	10090.4	50
5	10091.1	10091.4	50
6	10092.1	10092.4	50
7	10093.1	10093.4	50
8	10094.1	10094.4	50
9	10095.1	10095.4	50
10	10096.1	10096.4	50
11	10097.1	10097.4	50
12	10098.1	10098.4	50
13	12445.1	12445.4	50
14	12446.1	12446.4	50
15	12447.1	12447.4	50
16	12448.1	12448.4	50
17	12449.1	12449.4	50
18	12450.1	12450.4	50
19	12451.1	12451.4	50
20	12452.1	12452.4	50
21	12453.1	12453.4	50
22	12454.1	12454.4	50
23	12455.1	12455.4	50
24	12456.1	12456.4	50

Accessories

Marking

Page 126 - 129

Wire-protection

Spacing mm	10,00
Insulation stripping length mm	6,00
PCB hole diameter mm	1,30

	300 V	750 V
Rated voltage V	300 V	750 V
Rated current A	15 A	17,50 A (T60)
Cross section max. AWG/mm ²	22-14	1,50
Rated surge voltage	–	3,50 kV
Rated torque/Screw size	–	0,40 Nm/M2,6
Contamination degree	–	–

No. of poles

No. of poles	Cat.-No.		Qty.p.pck.
	● green (Ral 6018)	● dark grey (Ral 7016)	
2	10187.1	10187.4	50
3	10188.1	10188.4	50
4	10189.1	10189.4	50
5	10190.1	10190.4	50
6	10191.1	10191.4	50
7	10192.1	10192.4	50
8	10193.1	10193.4	50
9	10194.1	10194.4	50
10	10195.1	10195.4	50
11	10196.1	10196.4	50
12	10197.1	10197.4	50
13	13473.1	13473.4	50
14	13474.1	13474.4	50
15	13475.1	13475.4	50
16	13476.1	13476.4	50
17	13477.1	13477.4	50
18	13478.1	13478.4	50
19	13479.1	13479.4	50
20	13480.1	13480.4	50
21	13481.1	13481.4	50
22	13482.1	13482.4	50
23	13483.1	13483.4	50
24	13484.1	13484.4	50

Page 126 - 129