

Board to Board Connectors

FH (Free Height) 0.6mm Pitch Board to Board GIGA Connectors

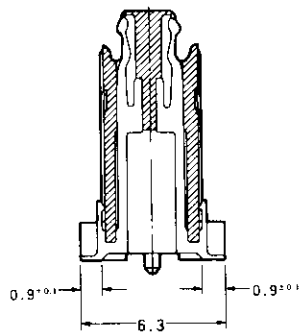
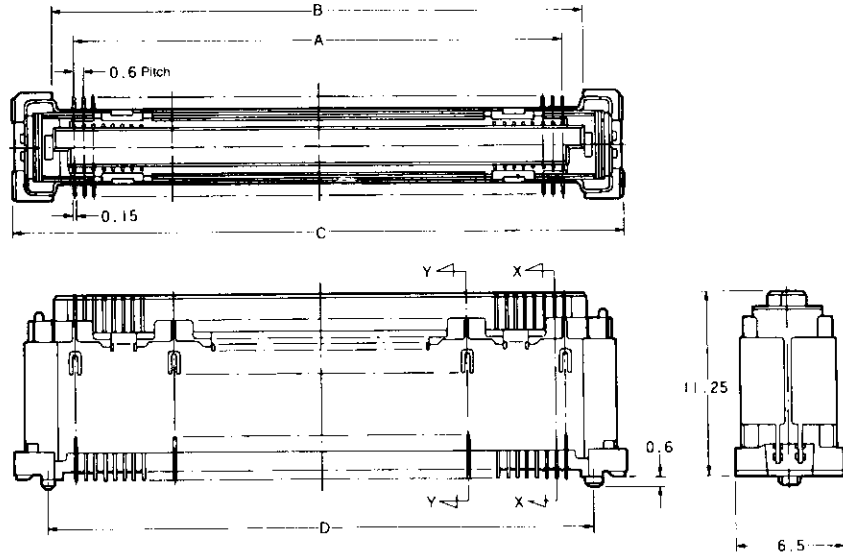
SMT Typed

12H Type
Receptacle Assembly
GIGA Type
With Grounding Plate

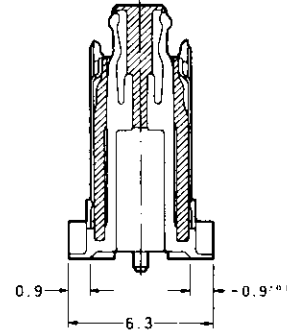
Acceptable Board Stacking
Height=12mm/13mm
14mm/15mm
16mm/18mm

Material and Finish :
 Housing — UL94V-0 rated heat resistant resin, natural color
 Contact — Copper alloy, 0.2µm min. gold plated on contact area, 1.0µm gold plated on soldering area, 1.3µm min. nickel underplated on entire contact.

For Mating Plug Distinction of Stacking Height, refer page 109

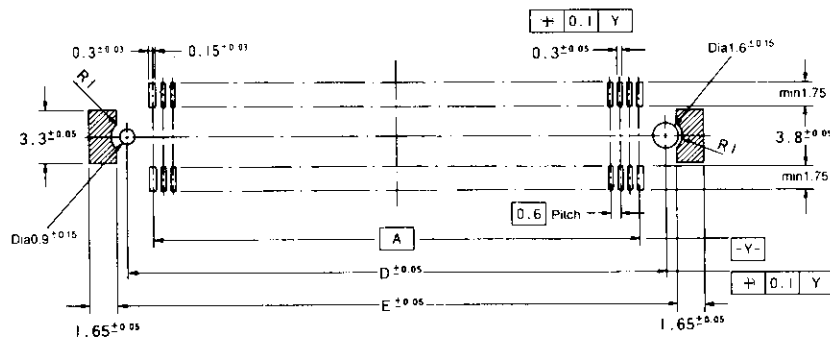


Section Y-Y
(Grounding Position)



Section X-X
(Signal Position)

No. of Pos.	Dimensions					P/N of Soft Tray Packaged	P/N of Hard Tray Packaged
	A	B	C	D	E	Without Sealant	With Sealant
140	41.4	44.0	48.7	44.6	45.8	1-316564-0	1-316318-0
160	47.4	50.0	54.7	50.6	51.8	—	1-316318-1



PC Board Layout