



SUPPLEMENT

RAFIX 22 FS+ / RAFX 22FSR / RAFX 30 FS+

CONTROL COMPONENTS

RAFIX 22 FS⁺



White (neutral)
Non-illuminated



Red (fault)
Illuminated



Green (operation)
Illuminated

Signal indicator with red/green display

RAFIX 22 FS⁺ 1.74.508.111/2200

With separate 2.8 x 0,8 mm quick-connect terminals and integrated reverse polarity protection, three signal statuses can be displayed in one luminaire.

- LED red/LED green illumination
- Operating voltage min. 8 ... max. 30 V DC
- With integrated reverse polarity protection



White (neutral)
Non-illuminated



Example red
Illuminated



Example green
Illuminated

Pushbutton with ring lighting

RAFIX 22 FS⁺ 1.30.270.100/2201

Can be illuminated for optical display of switching states. Using the short-travel adapter in the pushbutton together with the "MICON 5" tactile switch as the contact block, several light functions can be displayed and indicated by LEDs in the minimal installation space on the PCB.

- Black bezel/housing
- Momentary contact function
- White, translucent front ring (can be illuminated)



Translucent white (inactive)
Non-illuminated



Red (active)
Illuminated

EMERGENCY STOP pushbuttons "active/inactive"

RAFIX 22 FS⁺ 1.30.273.312/2200

(+ associated switching element 1.20.126.xxx/xxxx)

Has a translucent mushroom cap for full illumination and is fully compliant with the "Safety of machinery" standard in accordance with ISO 13850. The activity (standby) can be signaled by a red LED or an LED clip in the associated switching element. In accordance with UL 60 947, may only be used or designated as a "STOP" pushbutton.

- Yellow housing
- Translucent white mushroom cap (can be illuminated)
- Latching EMERGENCY STOP function



Keylock switch "SSG10"

RAFIX 22 FS⁺ 1.30.275.901/0000

Is authorized and mainly used in industrial systems for the automotive industry. A key is included in the scope of delivery.

- Housing color slate gray
- Metallized front ring
- 1 x 90 degree rotating angle (V-position)
- Removal of the key in 0 position

CONTROL COMPONENTS

RAFIX 30 FS⁺

White (neutral)
Non-illuminated

Red (fault)
Illuminated

Green (operation)
Illuminated

Signal indicator with red/green display

RAFIX 30 FS⁺ 1.74.510.111/2200

With separate 2.8 x 0,8 mm quick-connect terminals and integrated reverse polarity protection, three signal states can be displayed in one luminaire.

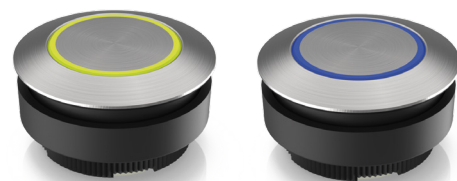
- LED red/LED green illumination
- Operating voltage min. 8 ... max. 30 V DC
- With integrated reverse polarity protection



White

Red

Green



Yellow

Blue

Pushbutton with stainless steel insert and ring lighting

RAFIX 30 FS⁺ white 1.30.290.121/0000

RAFiX 30 FS⁺ red

1.30.290.121/2300

RAFIX 30 FS⁺ green 1.30.290.121/2500

RAFIX 30 FS⁺ yellow 1.30.290.121/2400

RAFIX 30 FS⁺ blue 1.30.290.121/2600

The series is extended with a stainless steel bezel and additional ring lighting. Using short-travel adapters in the pushbutton together with the "MICON 5" tactile switch as the contact element, several light functions can be displayed and indicated by LEDs in the minimal installation space on the PCB.

- Black housing
- Stainless steel front ring/insert
- Translucent white, red, green, yellow and blue ring lighting
- Momentary contact function

Stainless steel blanking cap

RAFIX 30 FS⁺ 5.05.200.028/0000



Used to install unrequired cut-outs in the front panel. In terms of design, the stainless steel product is adapted to the "RAFIX 30 FS⁺" series as well as the "RAMO 30" and fits harmoniously into the overall design of the front control panel. Can also be used with the pre-assembled PCB switching elements "RAFIX 22 FS⁺".

- Stainless steel housing
- Fixing: with threaded ring

CONTROL COMPONENTS

RAFIX 22 FSR



White (neutral)
Non-illuminated

Red (fault)
Illuminated

Green (operation)
Illuminated

Signal indicator with red/green display

RAFIX 22 FSR 1.74.509.111/2200

With separate 2.8 x 0,8 mm quick-connect terminals and integrated reverse polarity protection, three signal statuses can be displayed in one luminaire.

- LED red/LED green illumination
- Operating voltage min. 8 ... max. 30 V DC
- With integrated reverse polarity protection

LEGENDING AND LEGEND INSERTS

RAFIX 22 FS+ and RAFIX 30 FS+

Legend inserts are available for legending pushbuttons. With the "FLEXLAB" labeling sheet, individual legending can be created using an inkjet printer. In addition, a WORD document is available to download as a template. The legend inserts are pre-cut and can be separated from the sheet individually.



Unprinted
labeling sheet

Unprinted labeling sheet

(9 x 6 = 54 legend inserts)

FLEXLAB 5.70.800.200/0000

- Blank membrane overlay
- Format DIN A4 (297 x 210 mm)
- Material polyester, approx. 0.125 mm, textured on one side
- Legending Smooth side with adhesive primer
- Inkjet printer / setting: membrane overlay



Printed
labeling sheet



Labeling sheet with separate
print and colors available on
request

Printed labeling sheet with standard symbols according to DIN ISO 7000:2008-12

(for 10 legend inserts each)

FLEXLAB 5.70.090.001026/1001

- Printed membrane overlay
- Format 140 x 65 mm
- Material polyester, approx. 0.125 mm
- 10x legend inserts
- Legending Black / digital print
- 26 symbol legends as per standard

RAFI GmbH & Co. KG

Ravensburger Str. 128-134, D-88276 Berg/Ravensburg

Phone.: +49 751 89-0, Fax: +49 751 89-1300

www.rafi.de, info@rafi.de

RAFI