

RAFIX 22 FS⁺, illuminated pushbutton with protective cap, round collar, momentary contact function, frontring silver gray, bezel red



fields of application

- › Measurement-control-regulation
- › Electrical engineering
- › Mechanical and system engineering
- › Vehicle construction
- › Handheld terminals
- › Industrial robots

special features

- › Mounting hole diameter: 22.3 mm according to IEC 60947
- › Mounting depth just 9.2 mm (with PCB switching element) or 27 mm (QC switching element)
- › Min. degree of protection IP65 according to DIN EN 60529
- › 2 collar shapes, round or square
- › Switching elements with silver contacts (max. 250 V/4 A) or gold contacts (max. 35 V/100 mA)
- › The switching elements for printed circuit boards (PCBs) can be combined with other components on a printed circuit board.
- › Switching elements with quick-connect terminal (QC) and LED clip for illumination
- › With the short-travel adapter, compatible with the MICON 5 tactile switch as a switching element
- › Legending on request



description

RAFIX control components are defined by RAFI as modular elements, including of actuator element, coupling if necessary and individual contact or lighting element.

Actuators (such as pushbuttons, emergency-stop pushbuttons, etc.) have the specified tactility, reset and general function only in combination with the appropriate contact elements.

Illuminated pushbutton, with protective cap for use in more difficult environmental conditions.

technical data

› general

illuminated	Yes
Bezel color	red

Front ring color	silver gray
Collar shape	round
Operating temperature, min.	-25 °C
Operating temperature, max.	70 °C
Storage temperature, min.	-40 °C
Storage temperature, max.	80 °C
Packaging	Box
Packaging unit	10 pcs.
Environment resistance	IEC 60068-2-14 IEC 60068-2-30 IEC 60068-2-33 IEC 60068-2-78
Operating life	1,000,000 Cycles
Degree of protection, front side, according to DIN EN 60529	IP65
UL Enclosure Type Rating front side	type 1 type 4X
Salt-spray resistance according to standard	IEC 60068-2-11
RoHS compliant	Yes
REACH compliant	Yes
Demontage möglich	No
Degree of protection, front side, according to ISO 20653	IP6K9K at 23°C water temperature

> mounting diameters

Mounting hole	22.3 mm
Mounting depth	9.2 mm
Installation height	9.85 mm
Grid, min.	30 x 30 mm
Outside dimension, length	29.8 mm
Outside dimension, width	29.8 mm
Outside dimension, height	20.7 mm
Collar dimension	ø 29,8 mm

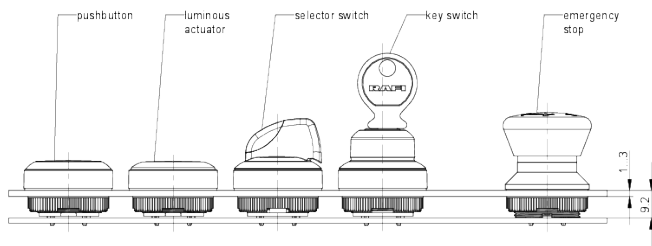
> mechanical data

Actuation function	momentary contact function
Operating force, max.	100 N
Operating travel, max.	4 mm
Fixing	Threaded ring
Threaded ring torque, max.	1.2 Nm

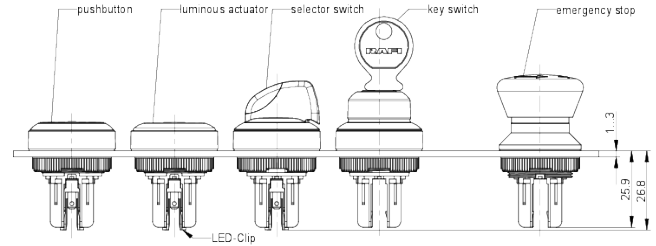
direct links[> RAFI eCatalog](#)

drawings

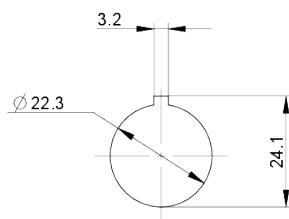
System drawing



System drawing



Mounting hole drawing



front panel drawing

