

**MICRO SWITCH**

FREEDPORT ILLINOIS U.S.A.  
A DIVISION OF HONEYWELL

FED MFG CODE 91929

**SWITCH-TOGGLE**

CATALOG LISTING  
**12TW8-10 SERIES**

**CHART 1**

CATALOG LISTING  
△

AVAILABLE LOCKING COMBINATIONS FOR CONFIGURATION SEE LETTERING DETAILS

STYLE NUMBER

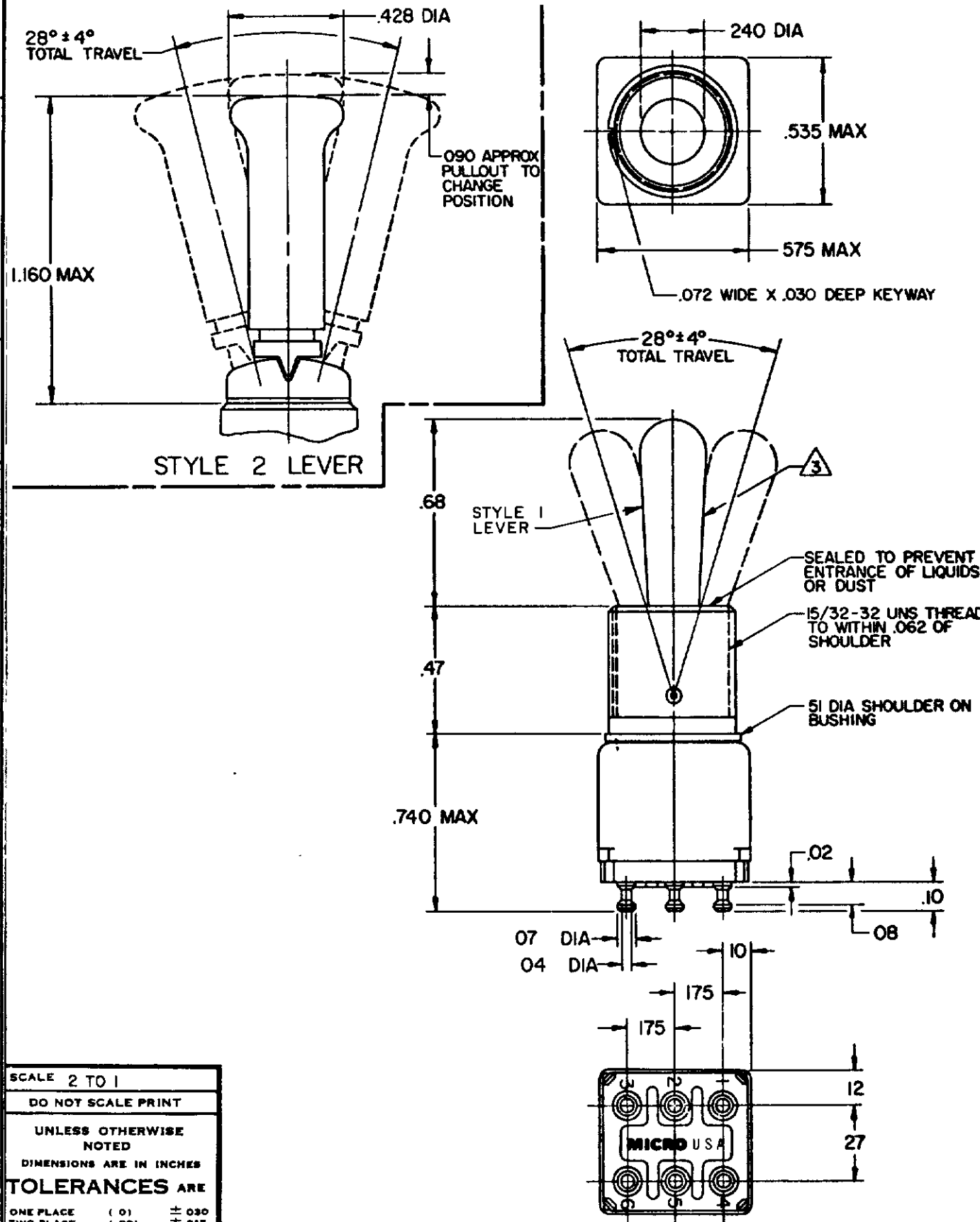
ELECTRICAL DATA

CODE L117 5A-125 VAC

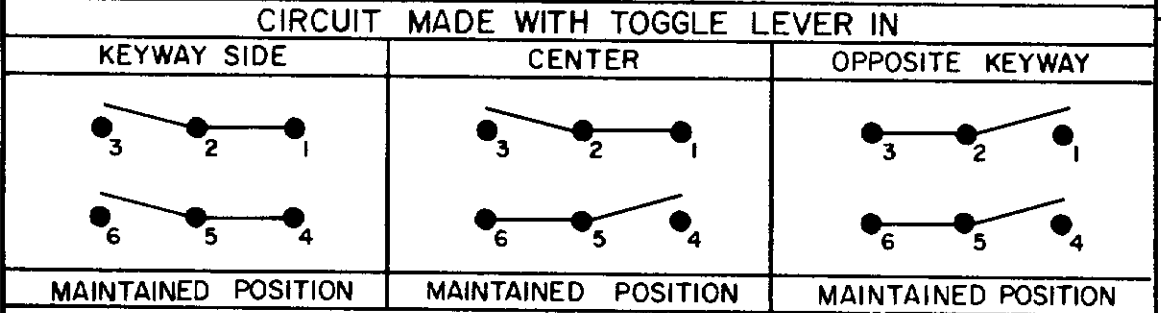
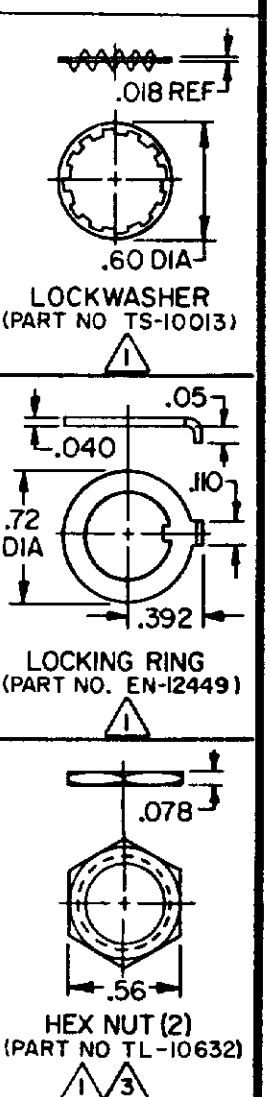


THIS DRAWING COVERS A PROPRIETARY ITEM AND IS THE PROPERTY OF MICRO SWITCH, A DIVISION OF HONEYWELL. THIS DRAWING IS NOT TO BE COPIED OR USED WITHOUT THE APPROVAL OF MICRO SWITCH.

CATALOG LISTING 12TW8-10 SERIES CHART 1  
 PAGE 1 OF 1  
 REPLACES CO-78465  
 ISSUE 1  
 REVISIONS  
 CHECK  
 23 JUN 94  
 KAG  
 CHECK  
 10 JUN 94  
 L.J.F.  
 DRAWN



"A" △ LOCKED IN THREE POSITIONS	"B" △ LOCKED IN CENTER AND EXTREME POSITION (KEYWAY SIDE)	"D" △ LOCKED OUT OF CENTER POSITION	"E" △ LOCKED IN CENTER POSITION	"F" △ LOCKED IN EXTREME POSITION (OPPOSITE KEYWAY)
"G" △ LOCKED IN EXTREME POSITION (KEYWAY SIDE)	"H" △ LOCKED OUT OF CENTER AND EXTREME POSITION (KEYWAY SIDE)	"J" △ LOCKED OUT OF CENTER AND EXTREME POSITION (OPPOSITE KEYWAY)	"K" △ LOCKED IN CENTER AND EXTREME POSITION (OPPOSITE KEYWAY)	"L" △ LOCKED OUT OF EXTREME POSITION (KEYWAY SIDE)
"M" △ LOCKED OUT OF AND INTO EXTREME POSITION (OPPOSITE KEYWAY)	"N" △ LOCKED OUT OF EXTREME POSITION (OPPOSITE KEYWAY)	"P" △ LOCKED OUT OF AND INTO EXTREME POSITION (KEYWAY SIDE)		



- NOTES**
- △1 FURNISHED UNASSEMBLED
  - 2 - TERMINALS ARE PLATED FOR SOLDERING
  - △3 MATTE FINISH
  - △4 SUFFIX LETTER MUST BE ADDED FOR DESIRED TYPE TOGGLE LOCKING. SEE CHART FOR AVAILABLE LOCKING COMBINATIONS
  - 5 - GOLD PLATED CONTACTS

SCALE 2 TO 1  
DO NOT SCALE PRINT  
UNLESS OTHERWISE NOTED  
DIMENSIONS ARE IN INCHES  
**TOLERANCES ARE**  
ONE PLACE ( ) ± .030  
TWO PLACE ( ) ± .015  
THREE PLACE ( ) ± .005  
ANGLES ± .005  
WEIGHT