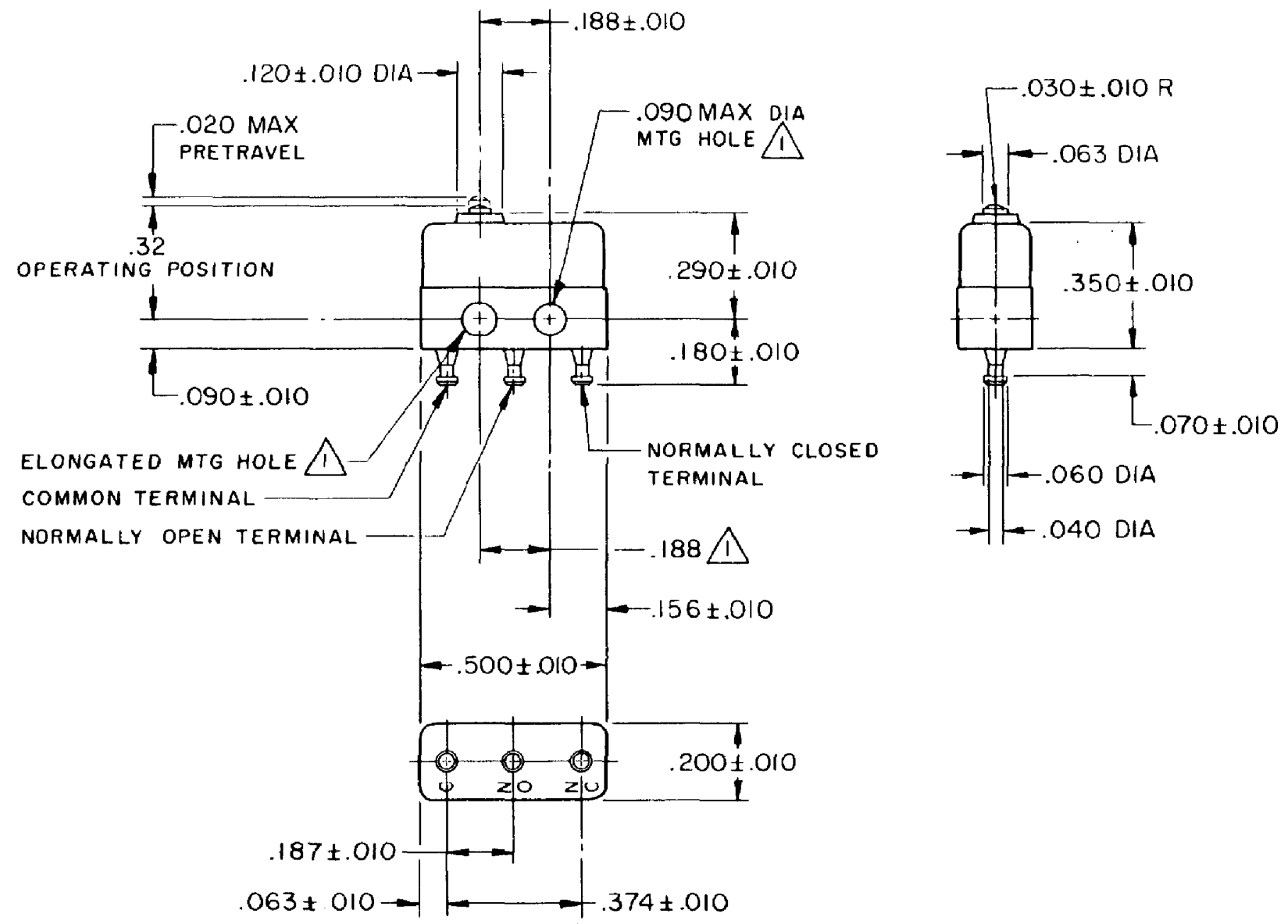
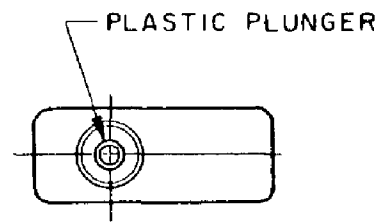


HONEYWELL PART NUMBER
12SX4-T
PRODUCT CODE VDK1085

REV	DOCUMENT	CHANGED BY	CHECK
8	0038449	VS 28APR08	BLR



- NOTES**
- MOUNTING HOLES WILL ACCEPT PINS OR SCREWS OF .087 MAX DIA ON .188 ± .002 CENTERS
 - TERMINALS ARE PLATED FOR SOLDERING
 - SWITCH WILL WITHSTAND TEMPERATURE OF 250° F
 - MOVABLE CONTACT MATERIAL - 24K SOLID GOLD
 - STATIONARY CONTACT MATERIAL - GOLD ALLOY

RELEASE NO.	PR-2264-T
REPLACES	

CHARACTERISTICS

OPERATING FORCE - - - - 2.5-5 OZ

RELEASE FORCE - - - - 1 OZ MIN

DIFFERENTIAL TRAVEL - - - .002 MAX

OVERTRAVEL - - - - - .004 MIN

ELECTRICAL DATA

CONTACT ARRANGEMENT
SPDT

30 VOLTS DC RATING

	SEA LEVEL	50,000 FT
INDUCTIVE	0.5 AMP	0.5 AMP
RESISTIVE	1 AMP	1 AMP

MAXIMUM INRUSH 2 AMP

APPROVALS

KEMA, CE	1A 250 V - T125 25E3	CE
UL, CSA	1A 125 VAC	UL BRAND L22J

DESIGN UNITS: INCH

TOLERANCES UNLESS NOTED:

NO PLACE	X	±
ONE PLACE	.X	±
TWO PLACE	.XX	±
THREE PLACE	.XXX	±
FOUR PLACE	.XXXX	±
ANGLES		±

THIRD ANGLE PROJECTION

DRAWN	SPK	13FEB08
CHECK	RJ	13FEB08
THIS DRAWING COVERS A PROPRIETARY ITEM AND IS THE PROPERTY OF HONEYWELL. THIS DRAWING IS NOT TO BE COPIED OR USED WITHOUT THE PERMISSION OF HONEYWELL.		
INTERPRET PER ANSI Y14.5M-1982 OTHER HONEYWELL ENGINEERING STANDARDS MAY APPLY		
RASTER		

Honeywell

TITLE: SWITCH - BASIC

SIZE	TYPE	DRAWING NAME	REV
B	I	12SX4-T	8
SCALE	-	WEIGHT: .003 LB MAX	SHEET 1 OF 1