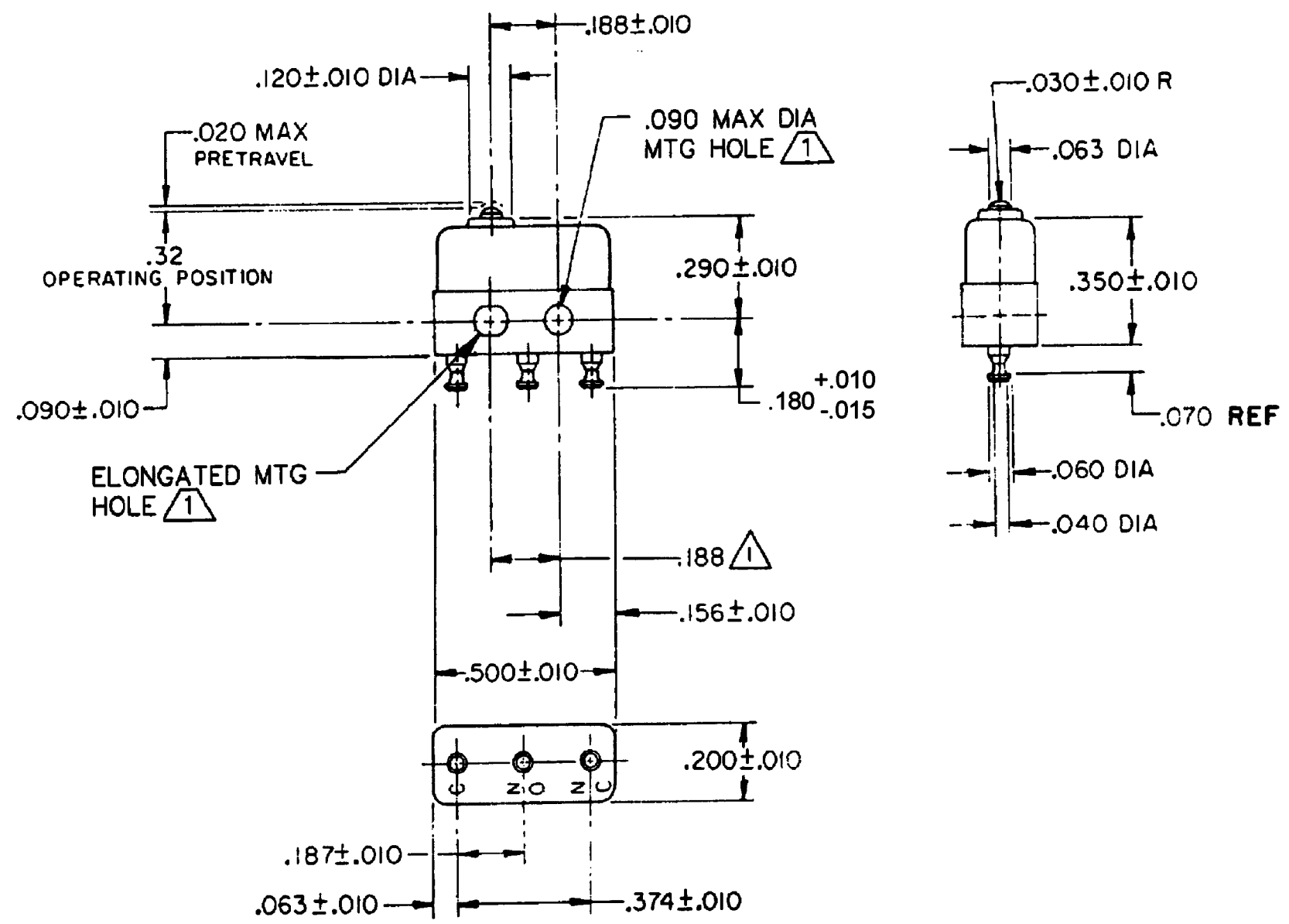
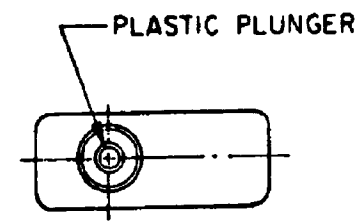


HONEYWELL PART NUMBER
12SX12-T
PRODUCT CODE VDK1105

REV	DOCUMENT	CHANGED BY	CHECK
7	0060324	VKR 13JAN10	CMH



NOTE—  
 1 MOUNTING HOLES WILL ACCEPT PINS OR SCREWS OF .087 MAX DIA ON .188 ± .002 CENTERS  
 2 - TERMINALS ARE PLATED FOR SOLDERING  
 3 - SWITCH WILL WITHSTAND TEMPERATURE OF 250°F  
 4 - MOVABLE CONTACT MATERIAL—24 K SOLID GOLD  
 5 - STATIONARY CONTACT MATERIAL—GOLD ALLOY

RELEASE NO.	PR-6439
REPLACES	-

CHARACTERISTICS
OPERATING FORCE - - - - 5 OZ MAX
RELEASE FORCE - - - - 1 OZ MIN
DIFFERENTIAL TRAVEL - - - .003 MAX
OVERTRAVEL - - - - - .004 MIN

ELECTRICAL DATA	
CONTACT ARRANGEMENT SPDT	
28 VOLTS DC RATING	
	SEA LEVEL
INDUCTIVE	0.5 AMP
RESISTIVE	1.0 AMP

DESIGN UNITS: INCH
TOLERANCES UNLESS NOTED:
NO PLACE X ±
ONE PLACE .X ±
TWO PLACE .XX ±
THREE PLACE .XXX ±
FOUR PLACE .XXXX ±
ANGLES ±
THIRD ANGLE PROJECTION

DRAWN	VK	05 MAR 08
CHECK	RJ	05 MAR 08
THIS DRAWING COVERS A PROPRIETARY ITEM AND IS THE PROPERTY OF HONEYWELL. THIS DRAWING IS NOT TO BE COPIED OR USED WITHOUT THE PERMISSION OF HONEYWELL.		
INTERPRET PER ANSI Y14.5M-1982 OTHER HONEYWELL ENGINEERING STANDARDS MAY APPLY		

<b>Honeywell</b>			
TITLE <b>SWITCH - BASIC</b>			
SIZE	TYPE	DRAWING NAME	REV
<b>B</b>	<b>I</b>	<b>12SX12-T</b>	<b>7</b>
SCALE	-	WEIGHT .003 LB MAX	SHEET 1 OF 1