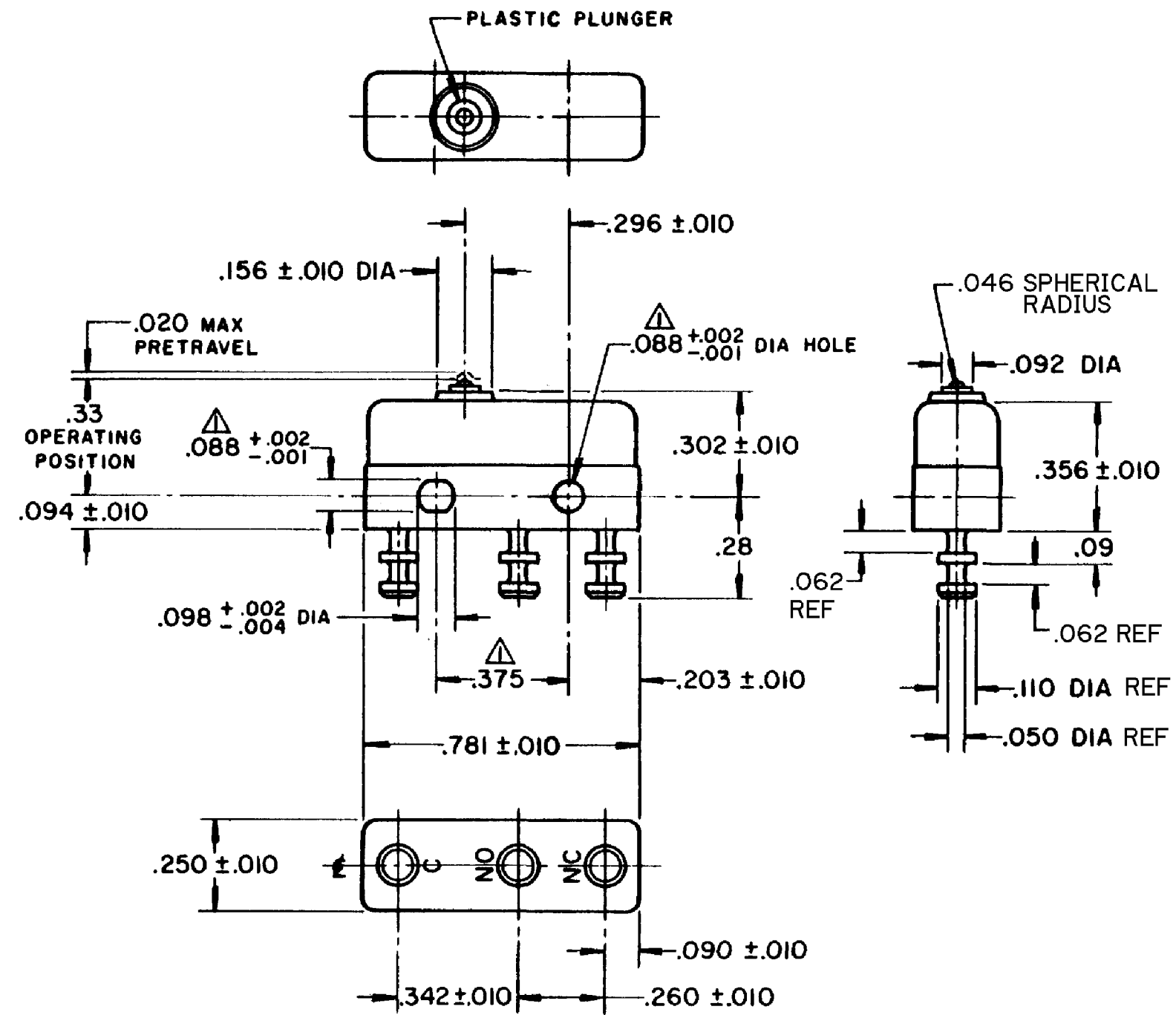


| |
|--------------------------|
| HONEYWELL PART NUMBER |
| 12SM4-T2 |
| PRODUCT CODE TXA0480 |
| JG-80591 |

| REV | DOCUMENT | CHANGED BY | CHECK |
|-----|----------|------------|-------|
| 6 | 0038111 | PK 20MAY08 | ASD |



NOTE -

- △ - MOUNTING HOLES WILL ACCEPT PINS OR SCREWS OF .087 MAX DIA ON .375 ±.002 CENTERS
- 2 - TERMINALS ARE PLATED FOR SOLDERING
- 3 - SWITCH WILL WITHSTAND TEMPERATURE OF 250°
- 4 - CONTACT MATERIAL - 24K GOLD PLATED

| | |
|-------------|----------|
| RELEASE NO. | SR-10699 |
| REPLACES | - |

| CHARACTERISTICS | |
|---------------------|----------|
| OPERATING FORCE | 3 - 5 OZ |
| RELEASE FORCE | 1 OZ MIN |
| DIFFERENTIAL TRAVEL | .004 MAX |
| OVERTRAVEL | .003 MIN |

| ELECTRICAL DATA | | |
|-----------------------------|-----------|--------------------|
| CONTACT ARRANGEMENT SPDT | | |
| 30 VOLTS DC RATING | | |
| | SEA LEVEL | 50,000 FT |
| INDUCTIVE | 1/2 AMP | 1/2 AMP |
| RESISTIVE | 1 AMP | 1 AMP |
| MAXIMUM INRUSH 2 AMP | | |
| APPROVALS | KEMA, CE | 1A, 250V ~ T85 1E4 |
| | UL, CSA | 1A, 125 VAC |

| |
|--------------------------|
| DESIGN UNITS: INCH |
| TOLERANCES UNLESS NOTED: |
| NO PLACE X ± |
| ONE PLACE .X ± |
| TWO PLACE .XX ± |
| THREE PLACE .XXX ± |
| FOUR PLACE .XXXX ± |
| ANGLES ± |
| THIRD ANGLE PROJECTION |

| | | |
|--------------------------------------------------------------------------------------------------------------------------------------------------------|----|---------|
| DRAWN | VK | 17OCT07 |
| CHECK | RJ | 17OCT07 |
| THIS DRAWING COVERS A PROPRIETARY ITEM AND IS THE PROPERTY OF HONEYWELL. THIS DRAWING IS NOT TO BE COPIED OR USED WITHOUT THE PERMISSION OF HONEYWELL. | | |
| INTERPRET PER ANSI Y14.5M-1982 OTHER HONEYWELL ENGINEERING STANDARDS MAY APPLY | | |
| RASTER | | |

| | | | |
|--------------------------------|----------|--------------------|--------------|
| Honeywell | | | |
| TITLE SWITCH - BASIC | | | |
| SIZE | TYPE | DRAWING NAME | REV |
| B | I | 12SM4 - T2 | 6 |
| SCALE | - | WEIGHT .006 LB MAX | SHEET 1 OF 1 |