

MICRO SWITCH

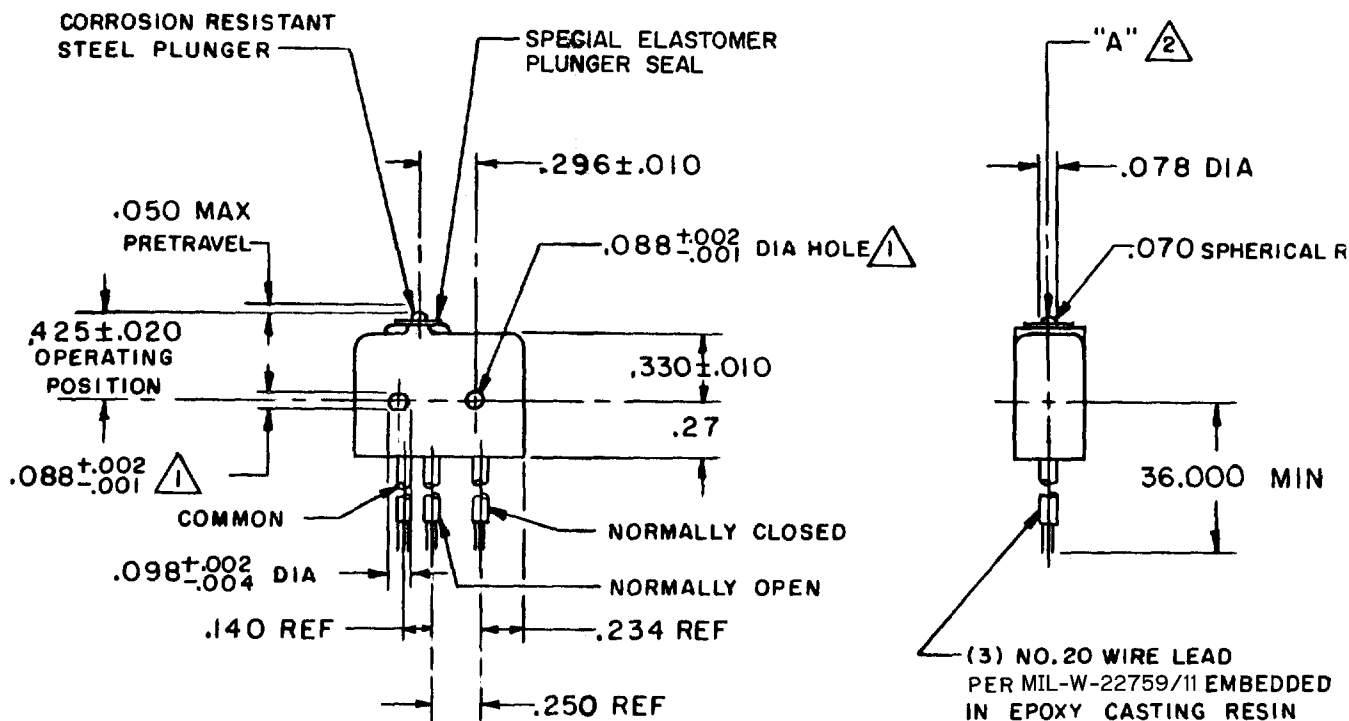
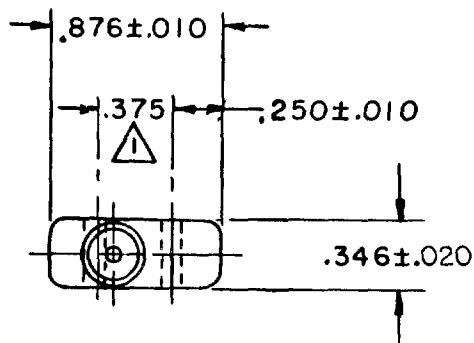
FREEMONT ILLINOIS, U.S.A
A DIVISION OF HONEYWELL

FED. MFG. CODE 91929

SWITCH-BASIC

CATALOG LISTING

12SEI-3



NOTE-

- 1 - MOUNTING HOLES WILL ACCEPT .087 MAX DIA PINS OR SCREWS ON .375±.002 CENTERS
- 2 - ACTUATION IN LINE WITH ARROW "A" IS RECOMMENDED
- 3 - WEIGHT OF SWITCH ONLY IS .26 OZ MAX, WEIGHT OF SWITCH WITH WIRE LEADS IS 1.00 OZ MAX
- 4 - ESTABLISHED FOR CESSNA AIRCRAFT CO.

THIS DRAWING COVERS A PROPRIETARY ITEM AND IS THE PROPERTY OF MICRO SWITCH, A DIVISION OF HONEYWELL. THIS DRAWING IS NOT TO BE COPIED OR USED WITHOUT THE APPROVAL OF MICRO SWITCH.

CHARACTERISTICS

OPERATING FORCE ----- 5-19 OZ
RELEASE FORCE ----- 4 OZ MIN
RELEASE TRAVEL ----- .004 MIN
DIFFERENTIAL TRAVEL ----- .004 MAX
OVERTRAVEL ----- .003 MIN

ELECTRICAL DATA

CONTACT ARRANGEMENT
S P D T

250 VAC ----- 5 AMP
30 VOLTS DC RATING

INDUCTIVE ----- SEA LEVEL ----- 3 AMP
50,000 FT ----- 2.5 AMP
RESISTIVE ----- SEA LEVEL ----- 5 AMP
50,000 FT ----- 5 AMP
MAXIMUM INRUSH ----- 24 AMP

SCALE FULL

DO NOT SCALE PRINT

UNLESS OTHERWISE NOTED
DIMENSIONS ARE IN INCHES

TOLERANCES ARE:

ONE PLACE	(.0)	±.030
TWO PLACE	(.00)	±.015
THREE PLACE	(.000)	±.005
ANGLES		±.005

WEIGHT 3

12SEI-3

PAGE 1 OF 1

M

DRAWING NUMBER

27

X8

ISSUE

88

REVISIONS

A	PR-2984	JAH	3 NOV 72
B	CO34213	JAL	26 SEPT 74
C	CO 51463-D	WJM	16 JUL 82
D	CO 55430	WJM	6 JUN 84
E	CO57041A	CJH	21 MAR 85
F	CO94274	DLM	MAR 99

REPLACES

RELEASE NO. PR-2984

CHECK

28 OCT 70

SLR

CHECK

28 OCT 70

DAW

CHECK

22 OCT 70

MJB

DRAWN

FO-50375-1A

FORMTEK