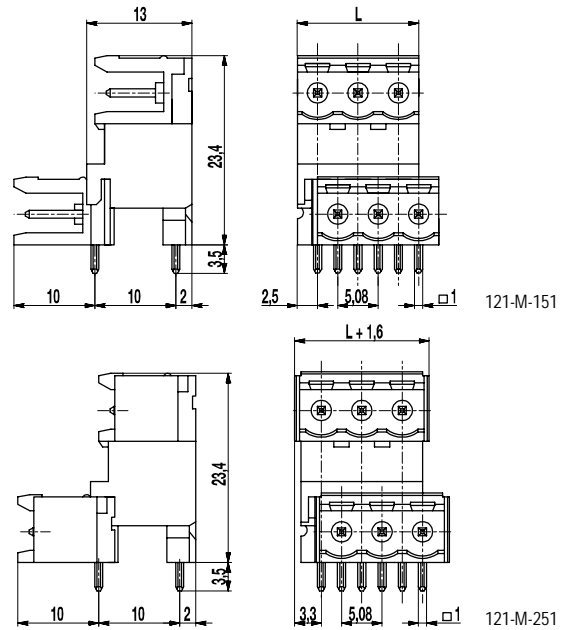


# 121-M-151/-251

Pin strip  
 Plug-in direction parallel to PCB, two-tier version



## GENERAL INFORMATION

Pitch	5,08 mm
No. of poles	4 - 24
Usable with	all plug connectors of series 121
Additional Information	Ordering information: ...M-151: without side walls ...M-251: with side walls

## TECHNICAL DATA

Overvoltage Category	III	III	II
Pollution Severity Level	3	2	2
Rated Voltage	250 V	320 V	630 V
Rated Impulse Voltage	4 kV	4 kV	4 kV
Rated Insulation Voltage	250 V acc. to EN 60998-1		
Rated Current	12 A		
Hole in PCB	ø 1,4 mm		

## APPROVALS

	Current [A]	Voltage [V]	Group	AWG	[Nm]
	15	300	B		
	10	300	D		
	15	300	B		
	10	300	D, E		

## MATERIAL

Moulding	PA, grey, V-0
Comparative Tracking Index	CTI ≥ 600
Insulating Group	I
Temperature Range	-40°C up to 100°C
Solder pin	1,0 x 1,0 mm; tin plated brass

## OPTIONS / ACCESSORIES

- Consecutive numbering
- Special marking according to drawing
- Self-adhesive marking strip BST-5,08
- Pitch of 10,16 mm for larger clearance and creepage distances
- Coding elements 120-K
- Connectors equipped with coding elements on request
- Two-tier version with front pin strip offset to the left
- Special arrangements of front- and rear row of the floor version

## CONFIGURATIONS

Poles	Part number	Article number	Part number	Article number	Length (L)	Packaging	PU
4	121-M-151/04	10.806.152	121-M-251/04	10.806.176	10,16 mm	Box	100
6	121-M-151/06	10.806.153	121-M-251/06	10.806.177	15,24 mm	Box	100

further number of poles on request

