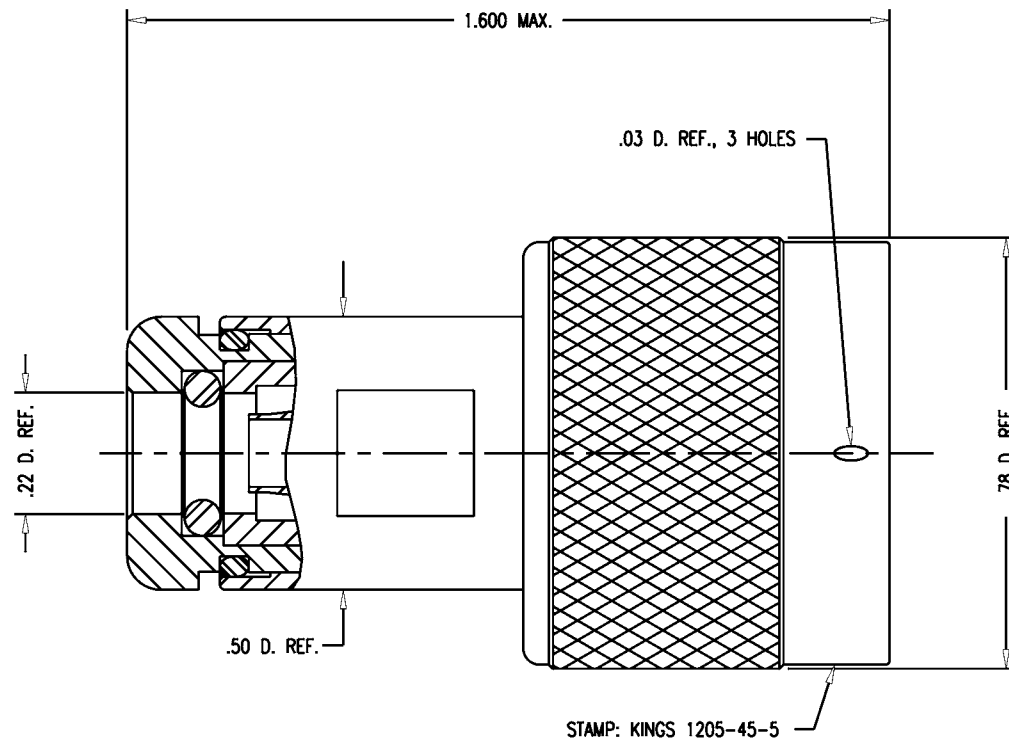


GSD

1205-45-5



NOTES:

1. FOR USE WITH M17/028-RG058, /84-RG223 & /060-RG142 CABLE GROUPS.
2. FOR CABLING INSTRUCTIONS SEE RG058 SECTION OF 3-526.
3. INTERFACE PER MIL-STD-348, FIG. 304-1.
4. MATERIALS:
 - INSULATORS: TEFLON, ASTM-D-1457
 - GASKET & O-RING: SIL. RUB., ZZ-R-765
 - C-RING } PHOS. BRONZE, QQ-B-750
 - OUTER CONTACT }
 - ALL OTHER PARTS: BRASS, ASTM-B16
5. FINISHES:
 - CONTACT M: HARD GOLD PLATE PER MIL-G-45204
 - ALL OTHER METAL PARTS: SILVER PLATE PER QQ-S-365
6. ELECTRICAL CHARACTERISTICS:
 - NOMINAL IMPEDANCE: 50 OHMS
 - VOLTAGE RATING: 1000 VRMS
 - FREQUENCY RANGE: DC TO 11 GHz

REVISIONS

ISSUE	CHANGES	
0	ER JCA	34243 11/11/92
1	CN JCA	34625 E 05/13/93
2	CN JCA	34826 D 08/09/93

JCA1721

SCALE 4:1

APPROX SURFACE AREA

WAS: E-17690

USED ON

REF:

PLUG, N, W/P TAPER GRIP

DRAWN	JCA	DATE	06/10/91
DESIGN	MJB	DATE	06/10/91
APPR.		DATE	

KINGS
ELECTRONICS CO., INC.
TUCKAHOE, NEW YORK 10707

1205-45-5

GSD