

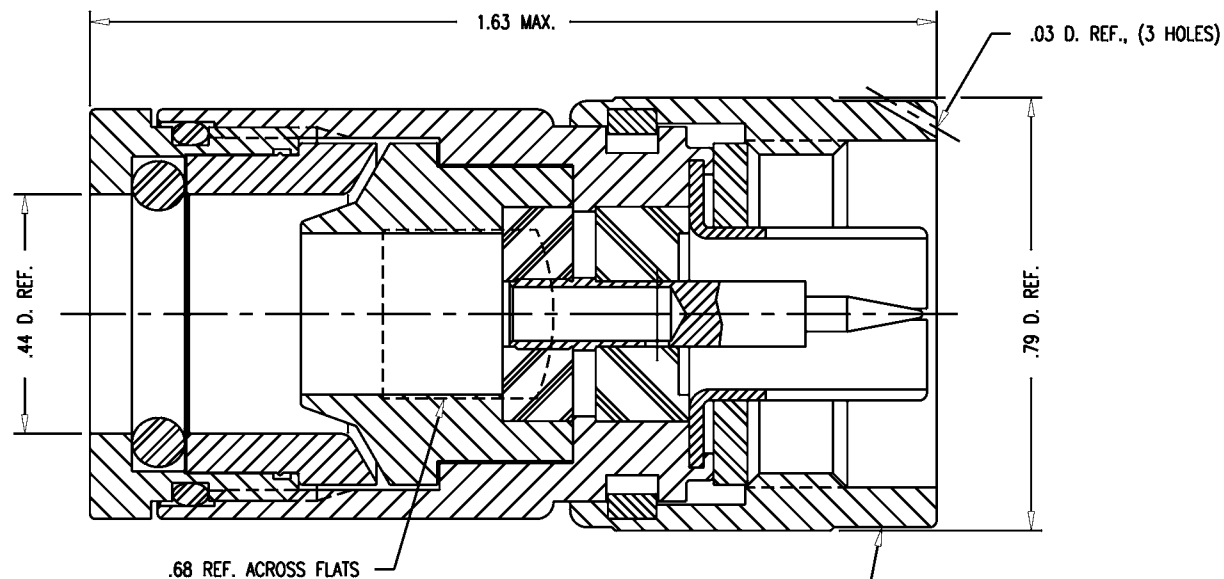
| | | |
|----------|--------|-----------|
| DASH NO. | M CODE | MADE FROM |
|----------|--------|-----------|

GSD

M39012/1-0005

REVISIONS

| ISSUE | CHANGES |
|-------|--------------------------|
| 0 | ER 33570 WJM 12/04/91 |



STAMP: 91836 M39012/1-0005
1205-35-5 XX XX DATE CODE

NOTES:

- FOR USE WITH M17/6-RG11, /62-RG144, /65-RG165, /74-213, /75-RG214, /77-RG216, /86-00001 CABLE.
- FOR CABLING INSTRUCTIONS SEE 3-539.
- INTERFACE PER MIL-STD-348, FIG. 304-1.
- MATERIALS:
INSULATORS: TEFLON, ASTM-D-1457
GASKETS: SIL. RUB., QQ-R-765
C-RING: PHOS. BRONZE, QQ-B-750
ALL OTHER PARTS: BRASS, ASTM-B16
- FINISHES:
CENTER CONTACT: HARD GOLD PLT. PER MIL-G-45204
ALL OTHER METAL PARTS: SILVER PLT. PER QQ-S-365
- ELECTRICAL CHARACTERISTICS:
NOMINAL IMPEDANCE: 50 OHMS
VOLTAGE RATING: 1000 VRMS
FREQUENCY RANGE: DC TO 11 GHz.

1205-35-5 JCA0907

SCALE 4:1

APPROX SURFACE AREA

USED ON

REF:

PLUG, N

DRAWN JCA DATE 09/20/90

DESIGN MJB DATE 09/20/90

APPR. VLS DATE 01/10/92

KINGS
ELECTRONICS CO., INC.
TUCKAHOE, NEW YORK 10707

GSD

M39012/1-0005