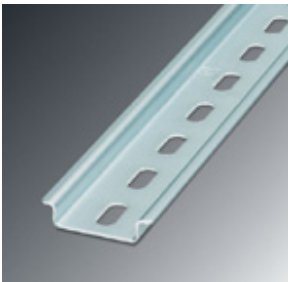


DIN rail perforated - NS 35/ 7,5 WH PERF 2000MM - 1204119

Please be informed that the data shown in this PDF Document is generated from our Online Catalog. Please find the complete data in the user's documentation. Our General Terms of Use for Downloads are valid (<http://download.phoenixcontact.com>)



DIN rail 35 mm (NS 35)

Product Features

- Für einen höheren Bedarf an Stückzahlen, existiert der äquivalente Artikel mit einer Verpackungseinheit von 25 Stück (50 m)



Key commercial data

Packing unit	1 M
Minimum order quantity	5 M
Weight per Piece (excluding packing)	340.0 GRM
Custom tariff number	72166190
Country of origin	Germany

Technical data

Dimensions

Height	7.5 mm
Length	2000 mm
Width	35 mm

General

Material	Steel
Coating	Galvanized, white passivated
Color	white
Test standard	In acc. with EN 60715: 2001

DIN rail perforated - NS 35/ 7,5 WH PERF 2000MM - 1204119

Classifications

eCl@ss

eCl@ss 4.0	23150301
eCl@ss 4.1	23150301
eCl@ss 5.0	27141143
eCl@ss 5.1	27141143
eCl@ss 6.0	27141143
eCl@ss 7.0	27141143
eCl@ss 8.0	27141143

ETIM

ETIM 2.0	EC001285
ETIM 3.0	EC001285
ETIM 4.0	EC000212
ETIM 5.0	EC000212

UNSPSC

UNSPSC 6.01	30212109
UNSPSC 7.0901	39121708
UNSPSC 11	39121708
UNSPSC 12.01	39121708
UNSPSC 13.2	39121708

Drawings

DIN rail perforated - NS 35/ 7,5 WH PERF 2000MM - 1204119

Dimensioned drawing

