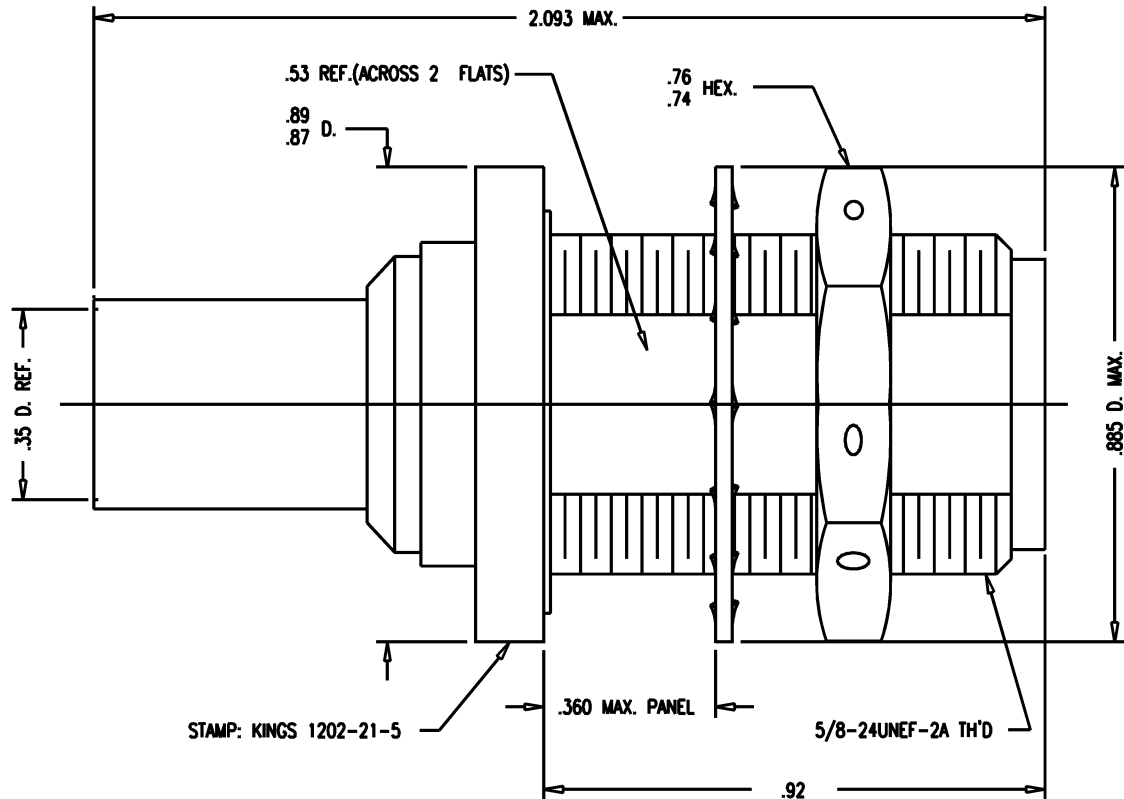


DASH NO.	M CODE	MADE FROM
----------	--------	-----------



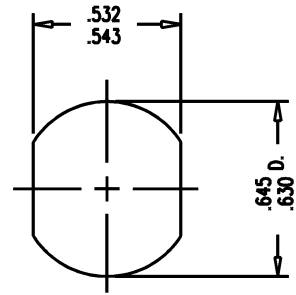
**NOTES:**

1. FOR USE WITH DOUGLAS D2348-2 CABLE.
2. FOR CABLING INSTRUCTIONS SEE CP-5402.
3. FOR CRIMPING USE DIE KTH-2012.
4. INTERFACE PER MIL-STD-348, FIG. 304-2.
5. CENTER CONTACT (1-534-7M9D) SUPPLIED UNASSEMBLED.
6. MARK PACKAGE: KINGS 1202-21-5 XX XX (DATE CODE)  
DOUGLAS 500489-2
7. MATERIALS:  
INSULATOR-TEFLON, ASTM-D-4894  
LOCKWASHER-PHOS. BRONZE, ASTM-B-103  
CENTER CONTACT-BER. COP., ASTM-B-196  
K-GRIP SLEEVE-COM. BRONZE, ASTM-B-140  
GASKET-SILICONE RUBBER, ZZ-R-765  
ALL OTHER METAL PARTS-BRASS, ASTM-B16
8. FINISHES:  
CENTER CONTACT-GOLD PLATE PER MIL-G-45204  
ALL OTHER METAL PARTS-SILVER PLATE PER QQ-S-365
9. ELECTRICAL CHARACTERISTICS:  
NOMINAL IMPEDANCE-50 OHMS  
FREQUENCY RANGE-DC TO 11 GHZ  
WORKING VOLTAGE-1000 VRMS

GSD

1202-21-5

REVISIONS	
ISSUE	CHANGES
0	ER 36810 KH 02/08/96
1	CN 36850 A CCT 02/28/96
2	CN 36978 C KH 05/20/96
3	CN 38941 E DCT 10/2/3



MOUNTING HOLE

GSD

SCALE	4:1
APPROX SURFACE AREA	
USED ON	
REF:	Mc D. D. AIRCRAFT # 500489-2 REV. A
JACK, BULKHEAD, N	
DRAWN	KH DATE 02/08/96
DESIGN	CT DATE 02/09/96
APPR.	DATE

**KINGS**  
ELECTRONICS CO., INC.  
ROCK HILL, SOUTH CAROLINA 29730

1202-21-5