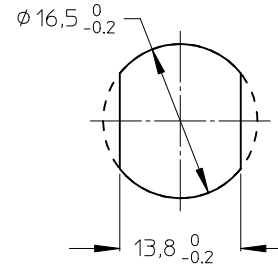
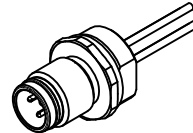


ITEM	COMPONENT	MATERIAL	FINISH
1	REC SHELL	BRASS	NICKEL PLATED
2	INSERT	PA	BLACK
3	CONTACT	BRASS / GOLD	CuZn Ni/ Au
4	WIRES	COPPER/ PVC	NONE
5	O-RING	NBR	BLACK
6	POTTING MATERIAL	EPOXY	NONE



Contact configuration	wire colour	wire mm ²	Part
	brown	0.34	1
	white	0.34	2
	blue	0.34	3
	black	0.34	4

POL MATERIAL NO. ENGINEERING NO. FINISHED LENGTH
 4 1200845108 WR4U26E03C3003 300±10

VOLTAGE RATING 250 VAC/VDC
 AMPERAGE RATING 4A
 PROTECTION IP 67/68/69
 OPERATING TEMPERATURE -25°C / +90 °C
 UL CERTIFICATION FILE NO. E152210
 CAS CERTIFICATION FILE NO. LR6837

ENTER DESCRIPTION EC NO: WEU2010-0309 DRWN: APOHL_WEU 2010/01/29 CHKD: 2010/02/01 APPR: FPACHER 2010/02/02	QUALITY SYMBOLS ▽=0 ◻=0	GENERAL TOLERANCES (UNLESS SPECIFIED)		DIMENSION STYLE MM ONLY		SCALE 4:1	DESIGN UNITS METRIC	THIRD ANGLE PROJECTION	
		mm	INCH	DRAWN BY APOHL_WEU	DATE 2010/01/29	TITLE RECEPTACLE MALE M12-4P ULTRA LOCK, FRONT, M16X1.5			
1	DESCRIPTION	4 PLACES	± ---	± ---	APPROVED BY FPACHER	DATE 2010/02/01	MOLEX INCORPORATED DOCUMENT NO. SD-120084-025 SHEET NO. 1 OF 1		
		3 PLACES	± ---	± ---	MATERIAL NO.				
		2 PLACES	± 0.05	± ---	SEE TABLE				
		1 PLACE	± 0.1	± ---	SIZE A3				
		ANGULAR ± ---°		DRAFT WHERE APPLICABLE MUST REMAIN WITHIN DIMENSIONS		THIS DRAWING CONTAINS INFORMATION THAT IS PROPRIETARY TO MOLEX INCORPORATED AND SHOULD NOT BE USED WITHOUT WRITTEN PERMISSION			