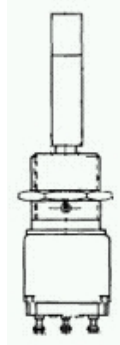




Home > Products > MICRO SWITCH™ Toggle Switches > TW > Product Page

### 11TW51-7



Actual product appearance may vary.

**TW Series Toggle Switch, 1 pole, 3 position, Solder terminal, Special Design Lever**

#### Order Product and Get Support

- U.S. Authorized Distributors
- Global Sales & Service
- N. American Sales Reps
- Distributor Inventory
- Technical Assistance
- White Papers
- Literature Request
- Test and Measurement Catalog
- RoHS Product List
- Customer Feedback

#### Features

Save space and weight  
 SPDT and DPDT circuitry  
 Temperature range: -85° F to +160° F (-65° C to +71° C)  
 Sealed bushing versions  
 Choice of 7/16 in. or 15/32 in. bushing  
 Color tab available on 15/32 in. bushing  
 UL recognized

#### Potential Applications

Industrial machinery and equipment  
 Military and commercial aviation  
 Construction equipment  
 Test instruments  
 Agricultural machinery  
 Process control  
 Medical instrumentation

#### Description

MICRO SWITCH™ miniature toggle switches in two bushing sizes. Molded in terminals are plated for soldering. Momentary and maintained circuitry closures available. Special on-on circuitries are also available. Pull-to-unlock levers prevent accidental operation.

#### Supporting Documentation

- [Accessory: Lever Sleeve](#)
- [Accessory: Seals](#)
- [Accessory: Nuts](#)
- [Engineering Drawing](#)

Product Specifications										
Circuitry/Operating action	<table border="0" style="width: 100%; text-align: center;"> <tr> <td style="width: 33%;"><b>Keyway Momentary Position</b></td> <td style="width: 33%;"><b>Center Position</b></td> <td style="width: 33%;"><b>Opposite Keyway Momentary Position</b></td> </tr> <tr> <td></td> <td></td> <td></td> </tr> <tr> <td>1 2 3 ON</td> <td>1 2 3 OFF</td> <td>1 2 3 ON</td> </tr> </table>	<b>Keyway Momentary Position</b>	<b>Center Position</b>	<b>Opposite Keyway Momentary Position</b>				1 2 3 ON	1 2 3 OFF	1 2 3 ON
<b>Keyway Momentary Position</b>	<b>Center Position</b>	<b>Opposite Keyway Momentary Position</b>								
1 2 3 ON	1 2 3 OFF	1 2 3 ON								
Product Type	MICRO SWITCH™ Toggle Switch									
Ampere/Voltage Range (Resistive Load)	0.1 A to 5.0 A at 0.5 Vdc to 28 Vdc, 0.1 A to 5.0 A at 0.5 Vac to 115 Vac									
Circuitry	SPDT									
Action	3 position									
Mounting	Bushing 15/32 in									
Termination	Solder									
Lever Type	Special Design									
UL/CSA Rating Code	L117: 5 A at 125 Vac									
Comment	Lusterless white rectangular lever									
Availability	Global									
UNSPSC Code	30211908									
UNSPSC Commodity	30211908 Toggle switches									
Series Name	TW									

#### My Links

[Login to iCOM](#)  
[Login as Rep/AD](#)  
[Login as Guest](#)  
[Login to Digital University](#)

#### Keyword Search

Search for product and support information.

All Sensing and Control

#### Product Search

Part number search:

Use (\*) to expand search

[Specification Search](#)