

# DC Frame Solenoid



## Model 11P

### Features:

- Push Solenoid
- AC & DC Applications
- See Model 11P AC
- UL recognized

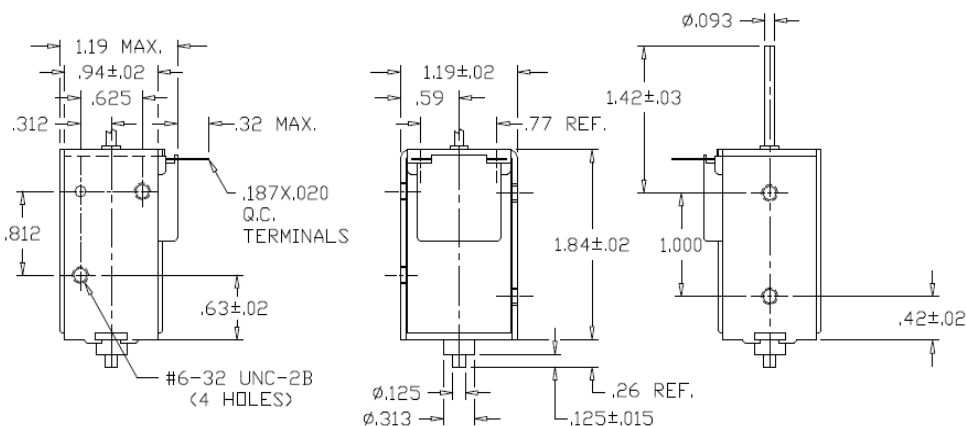
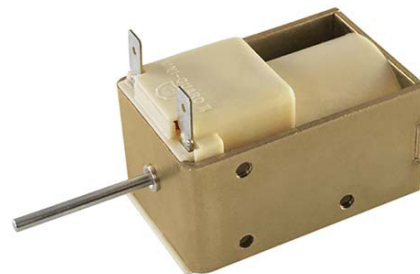
### Electrical:

- Coil Voltages: 6, 12, 24, 48, 110VDC standard
- Coil Termination: 3/16" QC terminals
- Duty Cycle: 100% Continuous, 25% Intermittent
- Coil treatment: Plastic cover
- Insulation Class: Class A Rating - 105° C (221° F)
- Dielectric Strength: 1500V 60 Hz

### Mechanical:

- Size: 1.84" (L) x 1.19" (W) x 1.19" (H)
- Plunger Diameter: 0.187"
- Plunger Guide Material: Plastic
- Mounting: 4- #6-32 holes
- Weight: Plunger 1.1 oz, Total 9.5 oz
- Life Expectancy: 1 Million Cycles<sup>1</sup>

<sup>1</sup> - Dependent on load conditions



Solenoid shown energized with plunger fully seated in extended position

### Standard Part Numbers

Model No.	Part No.	Duty Cycle	Voltage	Resistance <sup>2</sup> (Ω)	Power (W)	Current
11P-C-12D	A420-065712-00	Cont.	12VDC	18.4	8.2	652 mA
11P-I-12D	A420-065713-00	Inter. 25%	12VDC	7.5	20.2	1.6 A
11P-C-24D	A420-065714-00	Cont.	24VDC	93.1	6.5	258 mA
11P-I-24D	A420-065715-00	Inter. 25%	24VDC	29.1	20.8	825 mA

<sup>2</sup> - Coil resistance tolerance +/- 5%

Contact us for custom voltages or duty cycles



### Available Customization:

- Plunger
  - DC Voltage
  - Duty Cycle
  - Insulation systems up to class H 180° C (356° F)
- \* Minimum quantities apply

Stroke (in.)	Typical Push Force Ounces [N] @ 20°C (68°F) (Distance from fully extended position)									HOLDING FORCE Ounces [N]	Power (W)
	0.050	0.125	0.250	0.375	0.500	0.625	0.750	1.000			
Continuous 100%	35 [9.7]	21 [5.8]	10 [2.8]	6 [1.7]	4 [1.1]	2 [0.6]	1 [0.3]	N/A	82 [22.8]	7.8	
Intermittent 25%	62 [17.2]	46 [12.8]	27 [7.5]	18 [5.0]	10 [2.8]	8 [2.2]	6 [1.7]	5 [1.4]	93 [25.9]	20.2	

Continuous Duty 100% = 100% On Time

Intermittent Duty 25% = 25% On Time (100 Seconds On Max Followed By 300 Seconds Off)



**GUARDIAN-ELECTRIC.COM**

1425 Lake Ave - Woodstock IL 60098 - Phone: 800-762-0369  
The information is subject to change without notice. © Guardian Electric

