

MICRO SWITCH

A DIVISION OF MINNEAPOLIS-HONEYWELL REGULATOR COMPANY  
POMEROY, ILLINOIS

FED. MFR. CODE 91929

ASSEMBLY -  
TOGGLE SWITCH

CATALOG LISTING

11AT30 ★

(M) 11AT30  
ISSUE 3

REPLACES

RELEASE NO.

CHECK

CHECK

CHECK

CHECK

CHECK

CHECK

CHECK

11AT30

M

DRAWING  
NUMBER

3

★

8

ISSUE

★

8

## REVISIONS

A CO 16255

K L B

15 SEP 61

B CO 16594

D W V

3 JAN 62

C CO 17248

M B F

23 AUG 62

D CO 58771

K A G

12 FEB 86

E CO 59602

K A G

7 AUG 86

THIS DRAWING COVERS A PROPRIETARY ITEM AND IS THE PROPERTY OF MICRO SWITCH, A DIVISION OF MINNEAPOLIS-HONEYWELL REGULATOR CO. THIS DRAWING IS NOT TO BE COPIED OR USED WITHOUT THE APPROVAL OF MICRO SWITCH.

## CHARACTERISTICS

## ELECTRICAL DATA

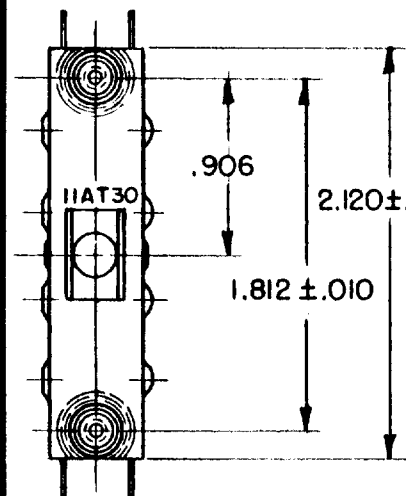
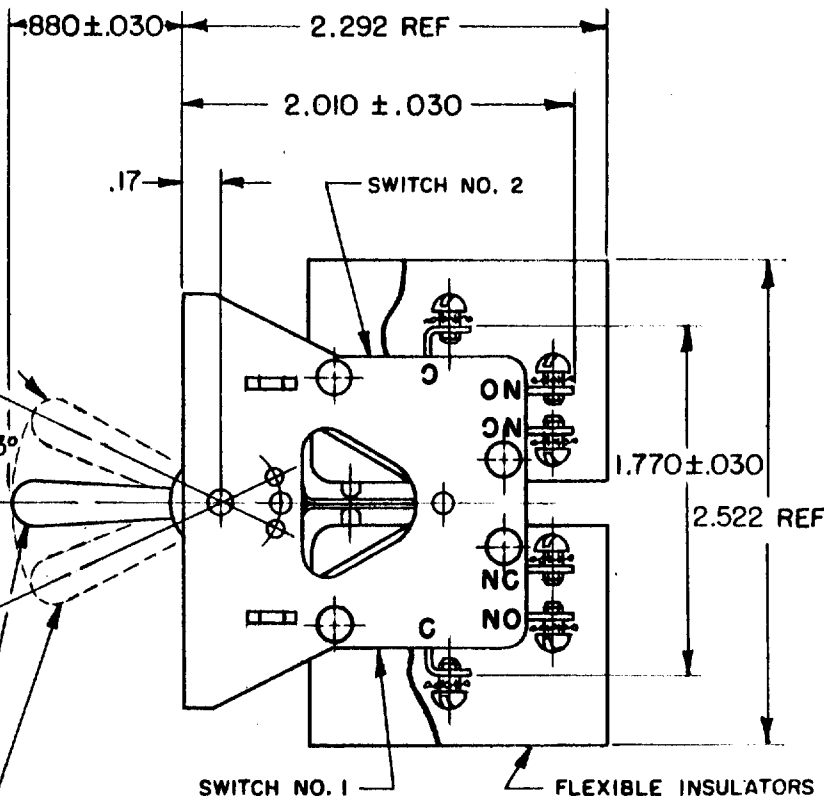
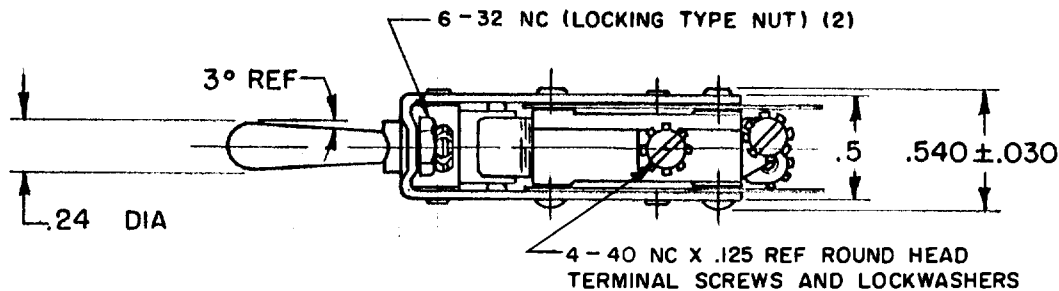
## SCALE FULL

CONTACT ARRANGEMENT  
S P D T (2)BREAK DISTANCE  
.040 APPROX

DO NOT SCALE PRINT

① 15 A - 1/3 HP - 125 OR 250 VAC  
1/2 A - 125 VDC; 1/4 A - 250 VDCUNLESS OTHERWISE  
SPECIFIED  
DIMENSIONS ARE IN INCHES  
**TOLERANCES ARE:**  
ONE PLACE (.0) ±.030  
TWO PLACE (.00) ±.015  
THREE PLACE (.000) ±.008  
ANGLES ±

WEIGHT .135 LB

NO TO C CIRCUIT MADE (SWITCH NO. 1)  
NC TO C CIRCUIT MADE (SWITCH NO. 2)  
(MAINTAINED POSITION)50° ± 6°  
TOTAL TRAVELNO TO C CIRCUIT MADE (SWITCH NO. 2), NC TO C CIRCUIT MADE  
(SWITCH NO. 1), (MAINTAINED POSITION)

NC TO C CIRCUITS MADE (BOTH SWITCHES) (MAINTAINED POSITION)

## NOTE -

1 - UNIT INCLUDES CATALOG LISTING V3 - 1 BASIC SWITCH (2)

CHECK

CHECK

CHECK

CHECK