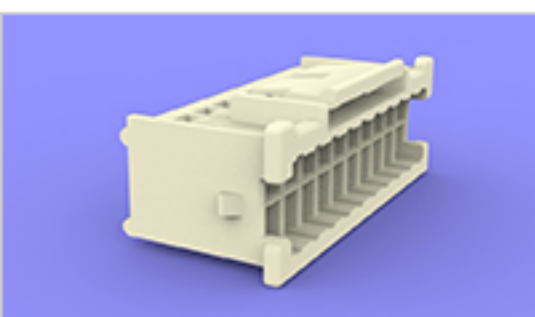


1-1969540-4 Product Details

[Share](#) | [Print](#) | [Email](#)


Economy Power Connectors

HOUSING, PLUG, DUAL ROW, EP2.5

1-1969540-4

TE Internal Number: 1-1969540-4

Product Highlights [View All](#)

- Economy Power 2.5 Product Line
- Connector
- Wire-to-Wire
- Applies To Wire/Cable
- 14 Positions

Active

[View 3D PDF](#)

- [Pricing & Availability](#)
- [Request Sample](#)
- [Add to My Part List](#)
- [Buy Product through Distributor](#)

[Documents](#) | [Features](#) | [Compliance](#)

Related Products

Not quite the product you're looking for?
[Find Similar Products](#)

[View Part in Product Feature Selector](#)

[Check for Tooling](#)

Feedback

Please Note:
Use the Product Drawing for all design activity

Product Type Features	
Product Line	Economy Power 2.5
Product Type [?]	Connector
Connector Type	Housing
Sealed	No
Mechanical Attachment	
Mating Retention Type	Latch(ing)
Electrical Characteristics	
Contact - Rated Current (A)	7.5
Operating Voltage Reference	AC
Operating Voltage (VAC)	250
Termination Features	
Wire/Cable Size (AWG)	22 - 26
Dimensions	
Length (X-Axis) (mm [in])	18.54 [0.730]
Width (Z-Axis) (mm [in])	12.32 [0.485]
Profile Height (Y-Axis) (mm [in])	8.30 [0.326]
Body Features	
Mating Retention	With
Contact Features	
Contact Type	Socket
Housing Features	
Centerline (mm [in]) [?]	2.50 [0.098]
Connector Style	Plug
Housing Color	White
Housing Material	Nylon - GF

Configuration Features	
Number of Positions [?]	14
Number of Rows	2
Industry Standards	
RoHS/ELV Compliance [?]	RoHS compliant, ELV compliant
Lead Free Solder Processes [?]	Not relevant for lead free process
RoHS/ELV Compliance History	Always was RoHS compliant
UL Flammability Rating	UL 94V-0
Environmental	
Operating Temperature (°C [°F])	-55 - +105 [-67 - +221]
Conditions for Usage	
Applies To	Wire/Cable
Glow Wire Rating	Standard Part - Not Glow Wire
Operation/Application	
Application Use	Wire-to-Wire
Contact Transmits (Typical Application)	Power
Packaging Features	
Packaging Method	Bag/Box
Other	
Brand	TE Connectivity

- Corporate Information**
- [About TE](#)
 - [Investors](#)
 - [News Room](#)
 - [Supplier Portal](#)
 - [Careers](#)
 - [Terms & Conditions](#)
 - [Privacy Policy](#)
 - [Global Accessibility Statement](#)

- Quick Links**
- [Distributor Inventory](#)
 - [Product Cross Reference](#)
 - [Documents & Drawings](#)
 - [Product Compliance Support Center](#)
 - [Site Map](#)

- Customer Support**
- [Email or Chat With Us](#)
 - [Find a Phone Number](#)
 - [Knowledge Base](#)
 - [Manage Your Account](#)

Keep Me Informed