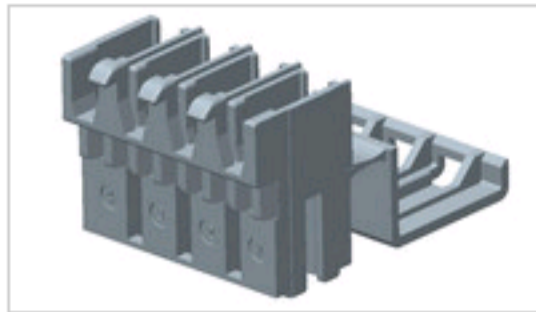


1-1703095-1 Product Details

[Share](#) | [Print](#) | [Email](#)


✓ Active

5mm Centerline IDC Connectors (AMP MT-Edge)

4POS MT - EDGE HOUSING

1-1703095-1

TE Internal Number: 1-1703095-1

Product Highlights [View All](#)

- MT Edge Product Line
- Connector Style = Receptacle
- 4 Positions
- Number of Rows = 1
- 5.00 mm Centerline

- [Pricing & Availability](#)
- [Request Sample](#)
- [Add to My Part List](#)
- [Buy Product through Distributor](#)

Feedback

[Documents](#) | **[Features](#)** | [Compliance](#)

Please Note:
Use the Product Drawing for all design activity

| Product Type Features | |
|--|--------------------|
| Product Line | MT Edge |
| Mount Angle [?] | Right Angle |
| Body Features | |
| Insulation Displacement Slots [?] | 4 |
| Keying Rib Location [?] | Between Cavity 1/2 |
| Keying Cavity Number | 1+2 |
| Housing Features | |
| Connector Style [?] | Receptacle |
| Centerline (mm [in]) | 5.00 [0.197] |
| Housing Color [?] | Natural |
| Housing Material | PA 6.6 |
| Configuration Features | |
| Number of Positions [?] | 4 |
| Number of Rows [?] | 1 |
| Locking Clip Location [?] | None |

| Industry Standards | |
|---|---|
| RoHS/ELV Compliance [?] | RoHS compliant, ELV compliant |
| Lead Free Solder Processes [?] | Not reviewed for lead free solder process |
| RoHS/ELV Compliance History | Always was RoHS compliant |
| UL Flammability Rating | UL 94V-2 |
| Conditions for Usage | |
| For Use With | Contacts: 926770, 926972 or 926917 |
| Operation/Application | |
| Industry Application | Appliances |
| Packaging Features | |
| Packaging Method [?] | Bag/Box |
| Packaging Quantity | 2,000 |
| Other | |
| Brand | AMP |

Related Products

Not quite the product you're looking for?
[Find Similar Products](#)

[View Part in Product Feature Selector](#)

[Check for Tooling](#)