



ABOUT US | WHAT'S NEW | CONTACT US | SERVICES | QUALITY | SITE MAP

- HOME
- PRODUCTS
- ONLINE CATALOG
- REQUEST QUOTE
- ORDER ONLINE
- CHECK STOCK
- REQUEST PRINT CATALOG
- REQUEST SAMPLES
- ENGINEERING DATA
- DISTRIBUTORS
- CAPABILITIES BROCHURE

CALL NOW:
203 888-2133



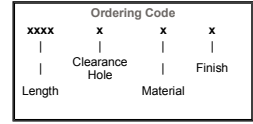
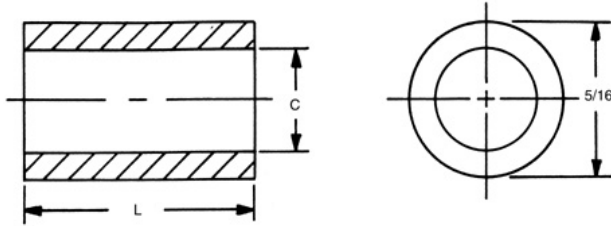
PART NO. SEARCH - ENTER 3-4 CHARS:

ENTER

Catalogs: [ASE](#) | [Metric](#) | [Handles & Ferrules](#)

5/16 Round Spacers

[Home](#) | [Previous](#) | [Next](#)
[Related Metric](#)



PART: 1153-6-N

Enter desired quantities:

Qty 1: 0 | Qty 2: 0 | Qty 3: 0

[Request Quote](#)

[Check Stock](#)

[Request Drawing](#)

Select	Part No.	Length
<input type="radio"/>	1153A	3/32
<input checked="" type="radio"/>	1153	1/8
<input type="radio"/>	1153T	5/32
<input type="radio"/>	1154	3/16
<input type="radio"/>	1154T	7/32
<input type="radio"/>	1155	1/4
<input type="radio"/>	1155T	9/32
<input type="radio"/>	1156	5/16
<input type="radio"/>	1156T	11/32
<input type="radio"/>	1157	3/8
<input type="radio"/>	1157T	13/32
<input type="radio"/>	1158	7/16
<input type="radio"/>	1158T	15/32
<input type="radio"/>	1159	1/2
<input type="radio"/>	1159T	17/32

Select	Part No.	Length
<input type="radio"/>	1160	9/16
<input type="radio"/>	1160T	19/32
<input type="radio"/>	1161	5/8
<input type="radio"/>	1161T	21/32
<input type="radio"/>	1162	11/16
<input type="radio"/>	1162T	23/32
<input type="radio"/>	1163	3/4
<input type="radio"/>	1163T	25/32
<input type="radio"/>	1164	13/16
<input type="radio"/>	1164T	27/32
<input type="radio"/>	1165	7/8
<input type="radio"/>	1165T	29/32
<input type="radio"/>	1166	15/16
<input type="radio"/>	1166T	31/32
<input type="radio"/>	1167	1"

Select	Part No.	Length
<input type="radio"/>	1168	1-1/16
<input type="radio"/>	1169	1-1/8
<input type="radio"/>	1170	1-3/16
<input type="radio"/>	1171	1-1/4
<input type="radio"/>	1172	1-5/16
<input type="radio"/>	1173	1-3/8
<input type="radio"/>	1174	1-7/16
<input type="radio"/>	1175	1-1/2
<input type="radio"/>	1176	1-9/16
<input type="radio"/>	1177	1-5/8
<input type="radio"/>	1178	1-11/16
<input type="radio"/>	1179	1-3/4
<input type="radio"/>	1180	1-13/16
<input type="radio"/>	1181	1-7/8
<input type="radio"/>	1182	1-15/16
<input type="radio"/>	1183	2"

Hole Clearance Code		
Select	Code	
<input type="radio"/>	4	+0.010 -.000
<input checked="" type="radio"/>	6	.115
<input type="radio"/>	8	.140
<input type="radio"/>	10	.166
<input type="radio"/>		.192

Select	Code	Material	RoHS
<input type="radio"/>	AL	Aluminum	YES
<input type="radio"/>	B	Brass	YES
<input type="radio"/>	SS	Stainless Steel	YES
<input type="radio"/>	S	Steel	YES
<input checked="" type="radio"/>	N	Nylon	YES
<input type="radio"/>	PH	Phenolic	YES

[Material Specifications](#)

SELECT FINISH:

Plain Finish

* Finishes ending with an asterisk are not RoHS Compliant
[Ordering non-standard items](#)