

## LUMOTAST FK, illuminated pushbutton, round collar, housing, momentary contact function, 1 NO



### fields of application

- Measurement-control-regulation
- Signalling systems
- Chemical industry

### special features

- Mounting hole diameter 16.2 mm
- 3 collar shapes
- Lamp socket: T1: full-surface illumination with LED is possible
- RAFI Click fastening technology or conventional technology with threaded ring
- Mounting depth behind the front panel only 30.7 mm with female quick connector
- Gold contacts for safe switching
- Reverse-polarity-secured terminal with 4-pole male quick connector and crimped ribbon cable
- Alternative: terminal with plug-in socket in PCB
- Water jet protection class IP 65 on front
- 1 NO gold contact (max. 35 V/100 mA)

## description

Our LUMOTAST FK illuminated pushbuttons are extremely compact. Featuring RAFI Click fastening technology, they can be front-mounted in seconds. Simply insert the key switch into the front panel, actuate once, and you're done!

The terminal is reverse-polarity secure using a male quick connector with ribbon cable – hence the designation "FK" (Flachbandkabel=ribbon cable). Alternatively, you can mount a plug-in socket as the terminal on the PCB. The integrated T1 lamp socket additionally allows full-surface illumination with LED.

## technical data

### ➤ general

illuminated	Yes
Collar shape	round
Operating temperature, min.	-25 °C
Operating temperature, max.	55 °C
Storage temperature, min.	-40 °C
Storage temperature, max.	80 °C

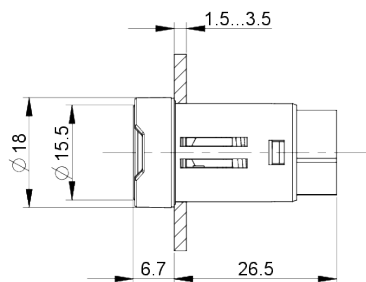
### direct links

- [RAFI eCatalog](#)

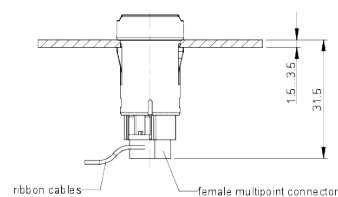
Lamp socket	Bi-pin
Packaging	Box
Packaging unit	10 pcs.
Operating life	1,000,000 Cycles
Degree of protection, front side, according to DIN EN 60529	IP65
RoHS compliant	Yes
REACH compliant	Yes
<b>&gt; mounting diameters</b>	
Mounting hole	16.2 mm
Mounting depth	30.7 mm
Installation height	6.6 mm
Outside dimension, length	18 mm
Outside dimension, width	18 mm
<b>&gt; mechanical data</b>	
Actuation function	momentary contact function
Operating force, max.	6 N
Operating travel, max.	3 mm
Contact function	1 NO
Contact system	Snap-action contact
Contact material	Gold
Fixing	Click quick fastener
Terminal on the rear	Male quick connector / plug-in socket
<b>&gt; electrical data</b>	
Rated voltage, min.	0.02 V
Rated voltage, max.	35 V
Rated current, min.	0 A
Rated current, max.	0.1 A

**drawings**

**Dimensioned drawing**

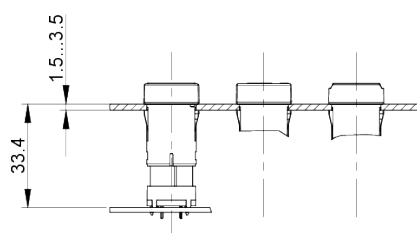


**System drawing**

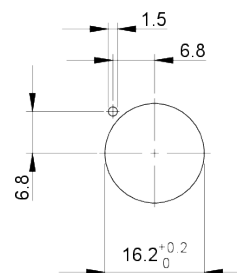


**System drawing**

Installation drawing with plug-in socket

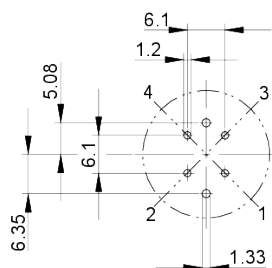


**Mounting hole drawing**



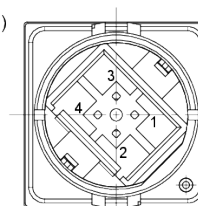
**PCB drawing**

Mounting hole PCB view on component side



**Connection drawing**

Wiring diagram (view of component bottom)



1 + 4 = Push-button connection, 2 + 3 = Light connection when used LED: Connection 3 = Cathode