

Instrument

Distinctive knobs for special applications. Glossy or satin finish. Phenolic for durability and attractive appearance. Line or slot for indicating a setting.



1100



1105



1110



1120



1140



1145

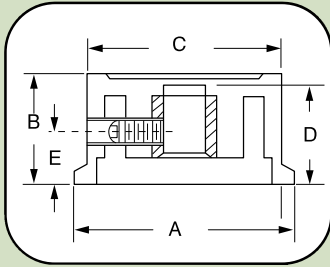


1150

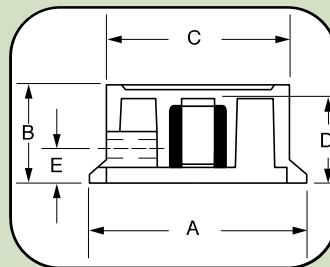


1155

PARTS 1100-1120



PARTS 1140-1155



Material Type	Part No.	A	B	C	D	E
TS	1100	25/32	15/32	21/32	13/32	1/2
TS	1105	1	37/64	29/32	1/2	27/32
TS	1110	1 9/32	21/32	1 5/32	33/64	1 1/32
TS	1120	1 3/4	13/16	1 1/2	45/64	1 15/32
TS	1140	19/32	35/64	31/64	27/64	23/64
TS	1145	13/16	5/8	41/64	1/2	1/2
TS	1150	15/16	25/32	3/4	19/32	19/32
TS	1155	1 3/8	45/64	1 9/64	19/32	29/32

Note: All parts include 1/4" brass insert with set screw.

* For parts with male studs, LENGTH projecting below knob must be specified.

■ Currently Manufacture/Tooled

▲ Could Manufacture/Requires Tooling

TS Thermoset

TP Thermoplastic