

PLEASE CHECK WWW.MOLEX.COM FOR LATEST PART INFORMATION

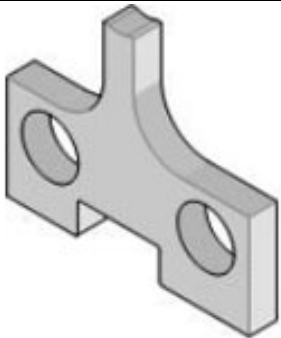
**Part Number:** 0011404205  
**Status:** Active  
**Description:** Insulation Anvil

**Documents:**  
RoHS Certificate of Compliance (PDF)

General	
Product Family	Application Tooling
Series	T9999
Comments	See Tooling Specification (PDF) Above
Function	Cutter
Geographic Area	Global
Level of Automation	Semi-Automatic
More Detailed Tech Information	applicationtooling@molex.com
Product Name	N/A
Tool Type	Anvil
UPC	800754209205
Warranty Disclaimer	CAUTION: Molex tooling crimp specifications are valid only when used with Molex terminals and tooling manufactured by Molex and sold by Molex or authorized distributors ("Molex Tooling"). When using tooling other than Molex Tooling with Molex specific connector systems listed in our ATS documents, the Molex tooling qualification does not apply and the responsibility for full qualification of the connector system is that of the customer. Molex accepts no liability for connector performance or tooling support where tooling other than Molex Tooling is used or where Molex Tooling is modified.

Material Info	
Engineering Number	8328-3

Reference - Drawing Numbers	
Application Tooling Documents	ATS-STANDARD-PARTS



Series image - Reference only

**EU ELV**  
**Not Reviewed**

EU RoHS	China RoHS
<b>Not Reviewed</b>	
<b>REACH SVHC</b>	
Not Reviewed	
<b>Halogen-Free</b>	
<b>Status</b>	
<b>Not Reviewed</b>	

**Need more information on product environmental compliance?**

Email [productcompliance@molex.com](mailto:productcompliance@molex.com)  
Please visit the [Contact Us](#) section for any non-product compliance questions.

China ROHS	Not Reviewed
ELV	Not Reviewed
RoHS Phthalates	Not Reviewed

**Search Parts in this Series**  
T9999 Series

**Use With**  
11-40-2056 , 11-40-2089 , 11-40-3056 ,  
11-40-3257

PLEASE CHECK WWW.MOLEX.COM FOR LATEST PART INFORMATION