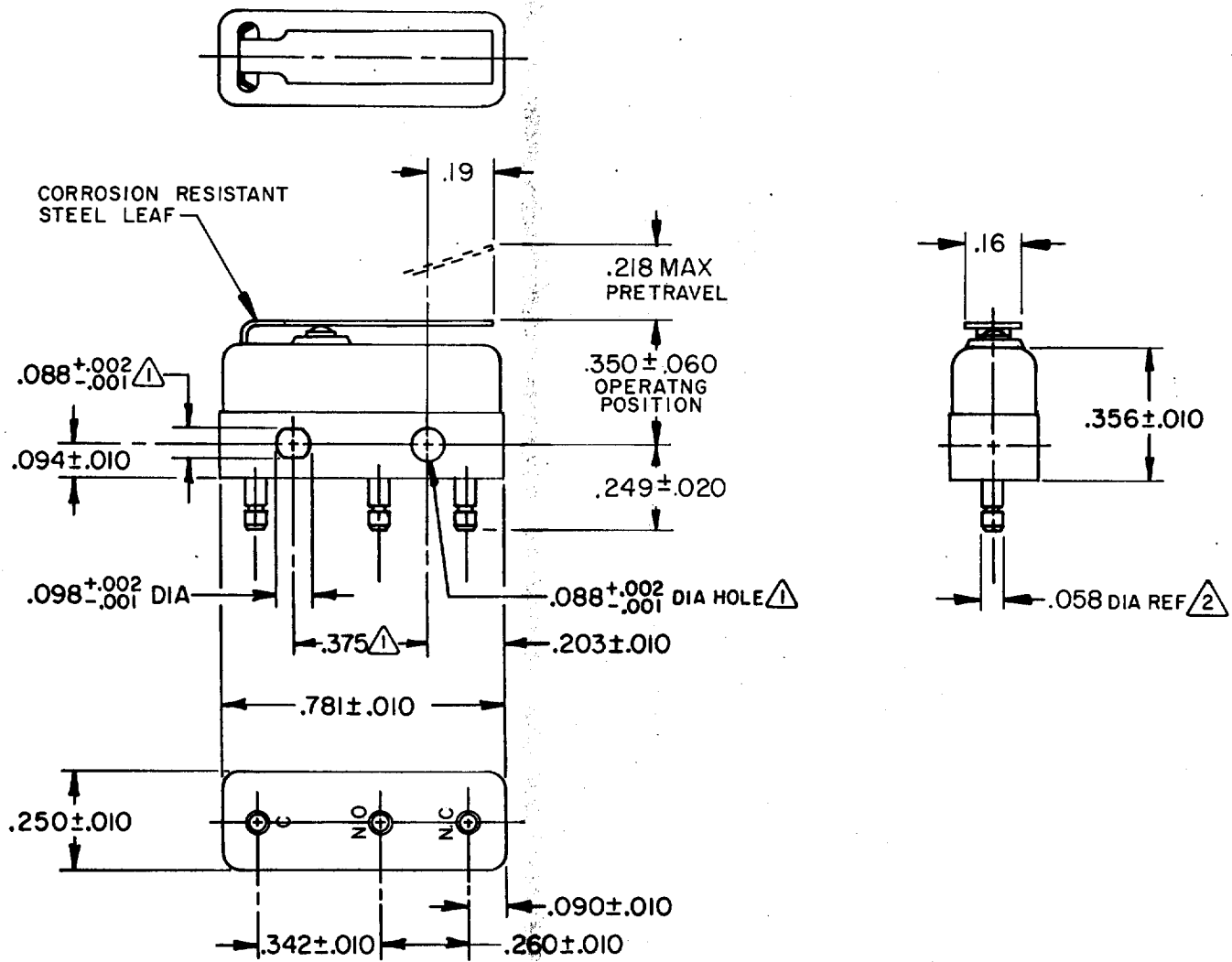
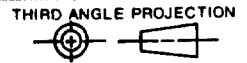


FO-52848-A
 DRAWN
 TSK
 27 JUNE 85
 CHECK KAG
 2 JUL 85
 CHECK
 REVISIONS
 A C063767
 JAP
 17 NOV 88
 ISSUE X2
 DRAWING NUMBER
 M
 111SM111-H58
 REPLACES X81086-SM
 RELEASE NO. PR-14014



NOTES
 ① MOUNTING HOLES WILL ACCEPT PINS OR SCREWS OF .087 MAX DIA ON .375 ± .002 CENTERS
 ② PLATED TERMINALS WILL ACCEPT "AMP INC" .058 DIA PIN RECEPTACLES.

THIS DRAWING COVERS A PROPRIETARY ITEM AND IS THE PROPERTY OF MICRO SWITCH, A DIVISION OF HONEYWELL. THIS DRAWING IS NOT TO BE COPIED OR USED WITHOUT THE APPROVAL OF MICRO SWITCH.



CHARACTERISTICS	
OPERATING FORCE	----- 7.5 OZ MAX
RELEASE FORCE	----- 1.5 OZ MIN
DIFFERENTIAL TRAVEL	----- .040 MAX
OVERTRAVEL	----- .020 MIN

ELECTRICAL DATA	
CONTACT ARRANGEMENT S P D T	
30 VOLTS DC RATING	
INDUCTIVE	SEA LEVEL ----- 3 AMP
	50,000 FT ----- 2.5 AMP
RESISTIVE	SEA LEVEL ----- 5 AMP
	50,000 FT ----- 5 AMP
MAXIMUM INRUSH	----- 24 AMP

SCALE 2 TO 1			
DO NOT SCALE PRINT			
TOLERANCES			
APPLY TO DESIGN UNITS. CONVERSIONS ARE ONLY FOR REFERENCE. UNLESS NOTED, TOLERANCES ARE ±			
NO PLACES	DIM. in	TOL. mm/in	DIM. in
ONE PLACE	X	1/.04	X
TWO PLACES	X,X	0.4/.010	X,X
THREE PLACES	X,X,X	0.10/.005	X,X,X
ANGLES			
DESIGN UNITS	<input type="checkbox"/> METRIC		<input checked="" type="checkbox"/> US CUSTOMARY
WEIGHT	.006 LB MAX		