

HIP.24/64, HIP-K.24/64, EMV-K.24/64 Gehäuse/Housings

Baugröße/Size 8

HIP: Druckdicht, silbergrau, **HIP-K:** Korrosionsgeschützt, schwarz

EMV-K: Schutz gegen elektromagnetische Beeinflussung, druckdicht, korrosionsgeschützt, schwarz



HIP: Pressure-tight, silver-grey, **HIP-K:** Housings corrosion-resistant, black

EMV-K: Protection against electro-magnetic interference, pressure-tight, housings corrosion-resistant, black

Druckdicht bis ≤ 5 bar/pressure-tight up to 5 bar

IP 68

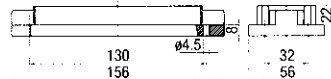
Bezeichnung
Description

 **Metr.**
 **PG**

Bestelltext
Designation

Bestell-Nr.
Order No.

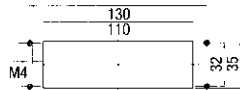
Anbaugehäuse: Kabeleingang unten, Standard Bauform
Surface mounted housing: Bottom entry, Standard construction



HIP
HIP.24/64.AG 1-1102665-5

HIP-K
HIP-K.24/64.AG 2-1102665-5

EMV-K
EMV-K.24/64.AG 4-1102760-5



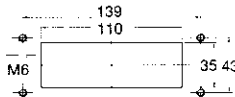
Anbaugehäuse: Kabeleingang unten, Standard Bauform
Surface mounted housing: Bottom entry, Standard construction



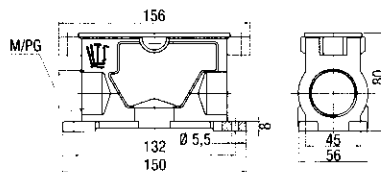
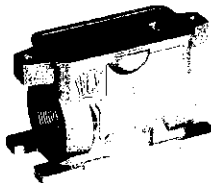
HIP
HIP.24/64.AG.M6 1-1102626-5

HIP-K
HIP-K.24/64.AG.M6 2-1102626-5
HIP-K.24/64.AG.M6.D 2-1102628-5
HIP-K-1.24/64.AG.M6.D 0-1108533-1

EMV-K
EMV-K.24/64.AG.M6 4-1102736-5



Sockelgehäuse: Kabeleingang seitlich, Standard Bauform
Surface mounted housing: Side entry, Standard construction

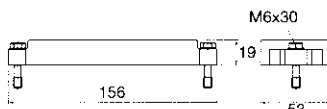


HIP
29 HIP.24/64.SG.1.29.G 1-1102624-5
2x29 HIP.24/64.SG.2.29.G 1-1102625-5
2xM40 HIP.24/64.SG.2.M40.G 0-1106472-1

HIP-K
29 HIP-K.24/64.SG.1.29.G 5-1102624-5
2x29 HIP-K.24/64.SG.2.29.G 2-1102625-5
2xM40 HIP-K.24/64.SG.2.M40.G 0-1106472-2

EMV-K
29 EMV-K.24/64.SG.1.29.G 4-1102734-5
2x29 EMV-K.24/64.SG.2.29.G 4-1102735-5
2xM40 EMV-K.24/64.SG.2.M40.G 0-1106460-2

Schutzkappe für Gehäuse-Unterteile
Protective covers housings



HIP
HIP/EMV.24/64.SKB 3-1106204-5

HIP-K/EMV-K
HIP-K/EMV-K.24/64.SKB 4-1106204-5

Passende Kabelverschraubungen Seite 173/Suitable Cable fittings page 173