

HB.24, HB-K.24, HD.64, HD-K.64 Gehäuse/Housings

Baugröße/Size 8

Pulverbeschichtet, silbergrau
K = korrosionsgeschützt, schwarz

Powder-coated, silver-grey
K = corrosion-resistant, black

Verschlussbügel am Oberteil/Locking clip on hood

IP 65

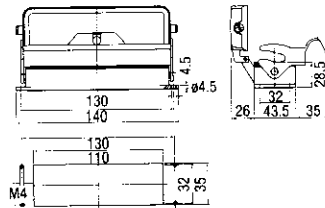
Bezeichnung
Description

Metr. PG

Bestelltext
Designation

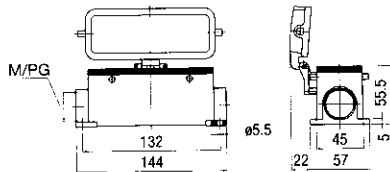
Bestell-Nr.
Order No.

Anbaugehäuse: Kabeleingang unten, Standard Bauform
Surface mounted housing: Bottom entry, Standard construction



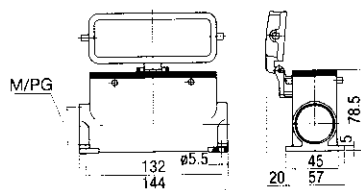
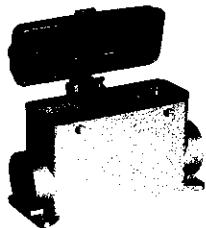
HB.24.AGD	1-1102340-6
Mit Korrosionsschutz With corrosion protection	
HB-K.24.AGD	2-1102340-6

Sockelgehäuse: Kabeleingang seitlich, Standard Bauform
Surface mounted housing: Side entry, Standard construction



2xM25	21	HB.24.SGD.1.21.Z	1-1102343-6
	2x21	HB.24.SGD.2.21.Z	1-1102345-6
		HB.24.SGD.2.M25.Z	0-1106464-1
		Mit Korrosionsschutz With corrosion protection	
2xM25	21	HB-K.24.SGD.1.21.Z	2-1102343-6
		HB-K.24.SGD.2.M25.Z	0-1106464-5

Sockelgehäuse: Kabeleingang seitlich, Hohe Bauform
Surface mounted housing: Side entry, High construction



2xM32	21	HD.64.SGD.1.21.Z	1-1103360-6
	2x21	HD.64.SGD.2.21.Z	1-1103362-6
	29	HD.64.SGD.1.29.Z	1-1103364-6
	2x29	HD.64.SGD.2.29.Z	1-1103366-6
		HD.64.SGD.2.M32.Z	0-1106469-1
		Mit Korrosionsschutz With corrosion protection	
2xM32	29	HD-K.64.SGD.1.29.Z	2-1103364-6
		HD-K.64.SGD.2.M32.Z	0-1106469-5

Passende Kabelverschraubungen Seite 173/Suitable Cable fittings page 173