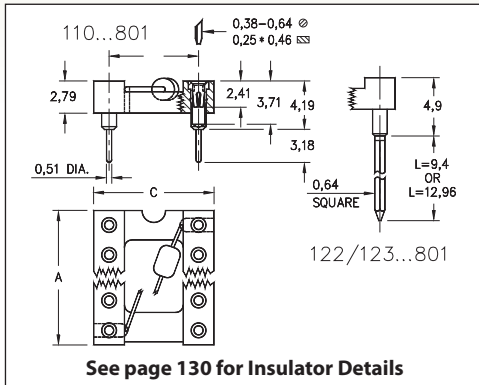
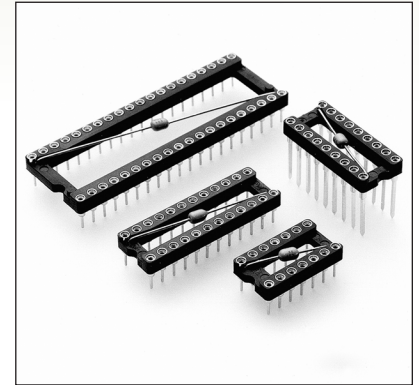


DUAL-IN-LINE SOCKETS

SERIES 110, 122, 123 • INTEGRAL DECOUPLING CAPACITOR • OPEN FRAME



- Low profile DIP sockets w/ integral decoupling capacitor: .1 μ F 20%-50V multi-layer ceramic epoxy encapsulated. Temp. range: -25° C to +85° C
- Hi-Rel, 4-finger BeCu #30 contact is rated at 3 amps. See page 253 for details
- Series 110, 122 and 123 use MM #1001, #0088 or #0089 pins. See pages 165 & 198 for details
- Insulators are high temperature thermoplastic, suitable for all soldering operations
- For Electrical, Mechanical and Environmental Data, see page 264 for details



Total number of pins				Quantity per tube	ORDERING INFORMATION		
	A	B	C		Solder Tail	L = 9,4 (2 Level Wrappost)	L = 12,96 (3 Level Wrappost)
14	17,7	7,62	10,1	28	110-XX-314-41-801000	122-XX-314-41-801000	123-XX-314-41-801000
16	20,3	7,62	10,1	25	110-XX-316-41-801000	122-XX-316-41-801000	123-XX-316-41-801000
18	22,8	7,62	10,1	22	110-XX-318-41-801000	122-XX-318-41-801000	123-XX-318-41-801000
20	25,3	7,62	10,1	20	110-XX-320-41-801000	122-XX-320-41-801000	123-XX-320-41-801000
22	27,8	7,62	10,1	18	110-XX-322-41-801000	122-XX-322-41-801000	123-XX-322-41-801000
24	30,4	7,62	10,1	16	110-XX-324-41-801000	122-XX-324-41-801000	123-XX-324-41-801000
28	35,5	7,62	10,1	14	110-XX-328-41-801000	122-XX-328-41-801000	123-XX-328-41-801000
22	27,8	10,16	12,7	18	110-XX-422-41-801000	122-XX-422-41-801000	123-XX-422-41-801000
24	30,4	15,24	17,7	16	110-XX-624-41-801000	122-XX-624-41-801000	123-XX-624-41-801000
28	35,5	15,24	17,7	14	110-XX-628-41-801000	122-XX-628-41-801000	123-XX-628-41-801000
32	40,6	15,24	17,7	12	110-XX-632-41-801000	122-XX-632-41-801000	123-XX-632-41-801000
40	50,8	15,24	17,7	10	110-XX-640-41-801000	122-XX-640-41-801000	123-XX-640-41-801000
<div style="border: 1px solid black; border-radius: 50%; padding: 5px; display: inline-block;"> XX=Plating Code See Below </div>					<div style="border: 1px solid black; padding: 5px; display: inline-block;"> RoHS-2 2011/65/EU </div>		
SPECIFY PLATING CODE XX =					13	93	43
Sleeve (Pin)					0,25 μ m Au	5,08 μ m Sn/Pb	5,08 μ m Sn
Contact (Clip)					0,76 μ m Au	0,76 μ m Au	0,76 μ m Au