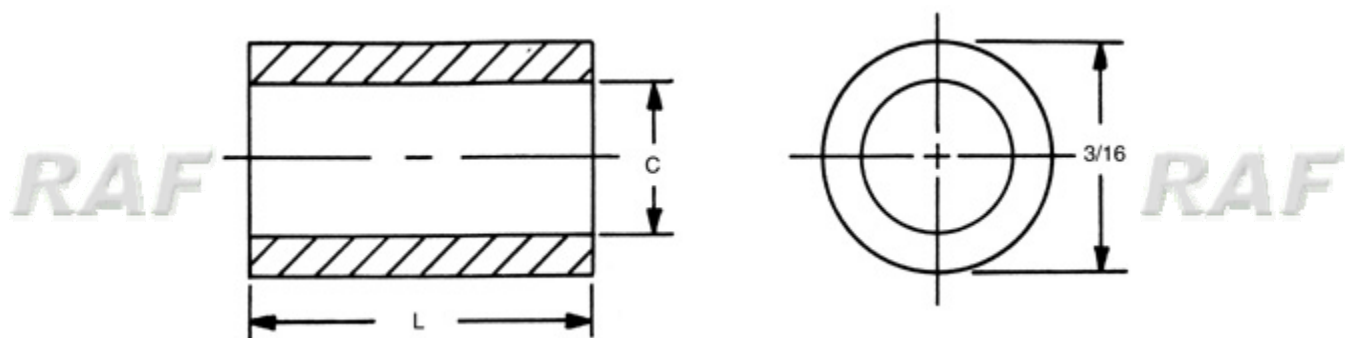


3/16 ROUND SPACERS



Order Code: 1118-2-N-0 (complete)

Finishes:

Plain Finish

[\[How to create part numbers\]](#)

SELECT	PART NO.	LENGTH
<input type="radio"/>	1107A	3/32
<input type="radio"/>	1107	1/8
<input type="radio"/>	1107T	5/32
<input type="radio"/>	1108	3/16
<input type="radio"/>	1108T	7/32
<input type="radio"/>	1109	1/4
<input type="radio"/>	1109T	9/32
<input type="radio"/>	1110	5/16
<input type="radio"/>	1110T	11/32
<input type="radio"/>	1111	3/8
<input type="radio"/>	1111T	13/32
<input type="radio"/>	1112	7/16
<input type="radio"/>	1112T	15/32
<input type="radio"/>	1113	1/2
<input type="radio"/>	1113T	17/32

Select	PART NO.	LENGTH
<input type="radio"/>	1114	9/16
<input type="radio"/>	1114T	19/32
<input type="radio"/>	1115	5/8
<input type="radio"/>	1115T	21/32
<input type="radio"/>	1116	11/16
<input type="radio"/>	1116T	23/32
<input type="radio"/>	1117	3/4
<input type="radio"/>	1117T	25/32
<input checked="" type="radio"/>	1118	13/16
<input type="radio"/>	1118T	27/32
<input type="radio"/>	1119	7/8
<input type="radio"/>	1119T	29/32
<input type="radio"/>	1120	15/16
<input type="radio"/>	1120T	31/32
<input type="radio"/>	1121	1

HOLE CLEARANCE CODE		
Select	CODE	+ .010 - .000
<input checked="" type="radio"/>	2	.090
<input type="radio"/>	4	.115

Ordering Code

xxxx	x	x	x
	Clearance		Finish
	Hole		
Length		Material	

Select	CODE	MATERIAL	RoHS
<input type="radio"/>	AL	ALUMINUM	YES
<input type="radio"/>	B	BRASS	YES
<input type="radio"/>	SS	STAINLESS STEEL	YES
<input type="radio"/>	S	STEEL	YES
<input checked="" type="radio"/>	N	NYLON	YES
<input type="radio"/>	PH	PHENOLIC	YES

For non standard items
[please click here](#)



© 1999 RAF Electronic Hardware All Rights Reserved
Seymour CT 06483 203 888-2133 Fax: 203 888-9860 www.rafhdwe.com

