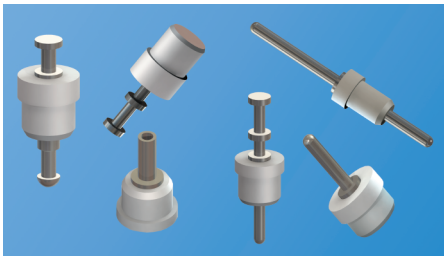


PTFE INSULATED TERMINALS & PINS

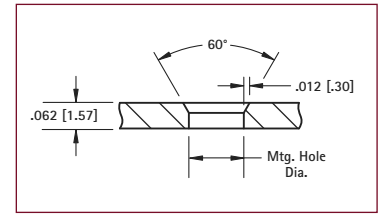


- Space saving design for high density packaging
- Outstanding Electrical, Mechanical, Thermal and Chemical properties
- Provides greater pull-out strength and high torque resistance
- Ideal for high quality terminal and connector applications
- Custom PTFE jacks manufactured to your specifications
- Other platings and bushing colors available upon request

SPECIFICATIONS

Terminal: Brass, Tin Plate
Bushing: White PTFE

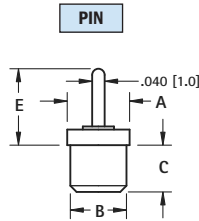
Mounting Detail



PINS



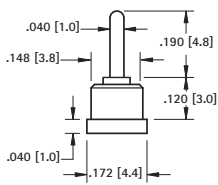
Top Mount



| CAT. NO. | A | B | C | E | Mtg. Hole Dia. |
|--------------|------------|------------|------------|-------------|----------------|
| 11065 | .125 (3.2) | .104 (2.6) | .089 (2.3) | .161 (4.1) | .091 (2.3) |
| 11066 | .125 (3.2) | .093 (2.4) | .100 (2.5) | .925 (23.5) | .086 (2.2) |
| 11067 | .172 (4.4) | .148 (3.8) | .100 (2.5) | .150 (3.8) | .136 (3.5) |
| 11068 | .172 (4.4) | .148 (3.8) | .075 (1.9) | .185 (4.7) | |
| 11069 | .172 (4.4) | .148 (3.8) | .050 (1.3) | .260 (6.6) | |
| 11070 | .172 (4.4) | .148 (3.8) | .075 (1.9) | .260 (6.6) | |
| 11071 | .172 (4.4) | .148 (3.8) | .100 (2.5) | .250 (6.4) | |
| 11072 | .172 (4.4) | .148 (3.8) | .160 (4.1) | .250 (6.4) | |
| 11073 | .172 (4.4) | .148 (3.8) | .100 (2.5) | .490 (12.4) | |
| 11074 | .172 (4.4) | .148 (3.8) | .100 (2.5) | .585 (14.9) | |



Bottom Mount

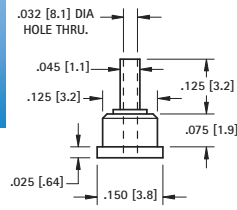


CAT. NO. 11075

Mtg. Hole
.136 (3.5) Dia.



HOLLOW PIN

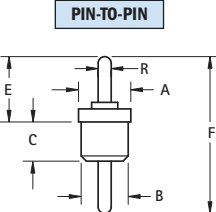


CAT. NO. 11076

Mtg. Hole
.113 (2.9) Dia.



Feed-Thru



| CAT. NO. | A | B | C | E | F | R | Mtg. Hole Dia. |
|--------------|------------|------------|------------|------------|-------------|------------|----------------|
| 11150 | .093 (2.4) | .075 (1.9) | .100 (2.5) | .315 (8.0) | .550 (13.9) | .030 (7.6) | .069 (1.8) |
| 11151 | .125 (3.2) | .093 (2.4) | .100 (2.5) | .196 (5.0) | .453 (11.5) | .040 (1.0) | .086 (2.2) |
| 11152 | .125 (3.2) | .093 (2.4) | .100 (2.5) | .250 (6.4) | .515 (13.1) | .040 (1.0) | .086 (2.2) |
| 11153 | .125 (3.2) | .093 (2.4) | .100 (2.5) | .250 (6.4) | .443 (11.3) | .040 (1.0) | .113 (2.9) |
| 11154 | .150 (3.8) | .125 (3.2) | .100 (2.5) | .250 (6.4) | .443 (11.3) | .040 (1.0) | .113 (2.9) |
| 11155 | .172 (4.4) | .148 (3.8) | .100 (2.5) | .250 (6.4) | .515 (13.1) | .040 (1.0) | .136 (3.5) |
| 11156 | .172 (4.4) | .148 (3.8) | .110 (2.8) | .260 (6.6) | .535 (13.6) | .040 (1.0) | .136 (3.5) |
| 11157 | .172 (4.4) | .148 (3.8) | .250 (6.4) | .250 (6.4) | .710 (18.0) | .040 (1.0) | .136 (3.5) |
| 11158 | .172 (4.4) | .148 (3.8) | .250 (6.4) | .303 (7.7) | .719 (18.3) | .040 (1.0) | .136 (3.5) |
| 11159 | .172 (4.4) | .148 (3.8) | .160 (4.1) | .250 (6.4) | .725 (18.4) | .040 (1.0) | .136 (3.5) |
| 11160 | .172 (4.4) | .148 (3.8) | .170 (4.3) | .250 (6.4) | .630 (16.0) | .040 (1.0) | .136 (3.5) |

SOLDER TERMINALS



Top Mount

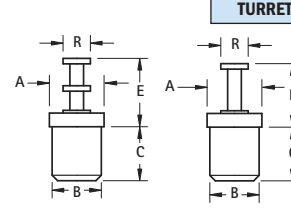


FIG. 1

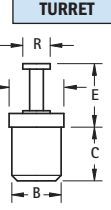


FIG. 2



Bottom Mount

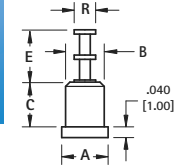
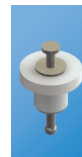


FIG. 3

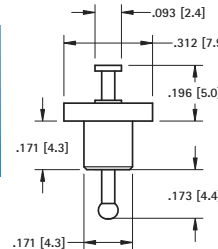
| CAT. NO. | FIG. | A | B | C | E | R | Mtg. Hole Dia. |
|---------------|------|------------|------------|------------|-------------|------------|----------------|
| 11300 | 1 | .125 (3.2) | .093 (2.4) | .100 (2.5) | .210 (5.3) | .060 (1.5) | .086 (2.2) |
| 11301 | 1 | .125 (3.2) | .093 (2.4) | .080 (2.0) | .250 (6.4) | .080 (2.0) | .086 (2.2) |
| 11302 | 1 | .125 (3.2) | .093 (2.4) | .100 (2.5) | .250 (6.4) | .080 (2.0) | .086 (2.2) |
| 11303 | 1 | .172 (4.4) | .148 (3.8) | .140 (3.6) | .194 (4.9) | .093 (2.4) | .136 (3.5) |
| 11304 | 1 | .172 (4.4) | .148 (3.8) | .110 (2.8) | .250 (6.4) | .080 (2.0) | .136 (3.5) |
| 11305 | 1 | .172 (4.4) | .148 (3.8) | .125 (3.2) | .303 (7.7) | .080 (2.0) | .136 (3.5) |
| 11306 | 1 | .172 (4.4) | .148 (3.8) | .165 (4.2) | .290 (7.4) | .093 (2.4) | .136 (3.5) |
| 11307 | 1 | .172 (4.4) | .148 (3.8) | .250 (6.4) | .290 (7.4) | .093 (2.4) | .136 (3.5) |
| 11308 | 1 | .172 (4.4) | .148 (3.8) | .165 (4.2) | .437 (11.1) | .093 (2.4) | .136 (3.5) |
| 11320 | 2 | .172 (4.4) | .148 (3.8) | .100 (2.5) | .150 (3.8) | .080 (2.0) | .136 (3.5) |
| 11321 | 2 | .187 (4.8) | .164 (4.2) | .150 (3.8) | .370 (9.4) | .090 (2.3) | .152 (3.9) |
| 11322* | 2 | .150 (3.8) | .125 (3.2) | .110 (2.8) | .180 (4.6) | .090 (2.3) | .113 (2.9) |
| 11310 | 2 | .125 (3.2) | .093 (2.4) | .100 (2.5) | .170 (4.3) | .060 (1.5) | .086 (2.2) |
| 11311 | 3 | .172 (4.4) | .148 (3.8) | .100 (2.5) | .210 (5.3) | .080 (2.0) | .136 (3.5) |
| 11312 | 3 | .187 (4.8) | .171 (4.3) | .155 (3.9) | .210 (5.3) | .080 (2.0) | .158 (4.0) |

*Hollow Turret

TURRET-TO-TURRET

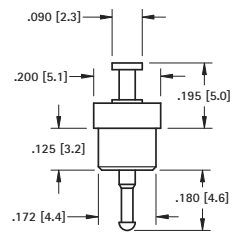


Feed-Thru



CAT. NO. 11250

Mtg. Hole
.158 (4.0) Dia.



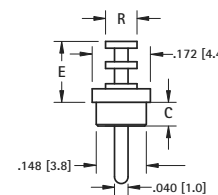
CAT. NO. 11251

Mtg. Hole
.158 (4.0) Dia.

TURRET-TO-PIN



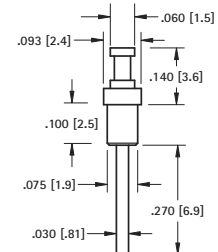
Feed-Thru



| CAT. NO. | C | E | R | Mtg. Hole Dia. |
|--------------|------------|------------|------------|----------------|
| 11216 | .100 (2.5) | .250 (6.4) | .080 (2.0) | .136 (3.5) |
| 11217 | .230 (5.8) | .375 (9.5) | .093 (2.4) | .136 (3.5) |



Feed-Thru



CAT. NO. 11218

Mtg. Hole
.066 (1.7) Dia.