

HIP.6/16, HIP-K.6/16, EMV-K.6/16 Gehäuse/Housings

Baugröße/Size 3

HIP: Druckdicht, silbergrau, **HIP-K:** Korrosionsgeschützt, schwarz

EMV-K: Schutz gegen elektromagnetische Beeinflussung, druckdicht, korrosionsgeschützt, schwarz



HIP: Pressure-tight, silver-grey, HIP-K: Housings corrosion-resistant, black

EMV-K: Protection against electro-magnetic interference, pressure-tight, housings corrosion-resistant, black

Schraubverriegelung am Oberteil/Screw lock on hood

IP 68

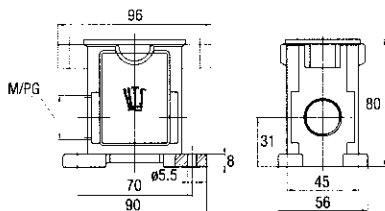
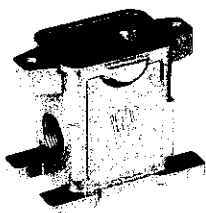
Bezeichnung
Description

 Metr.
 PG

Bestelltext
Designation

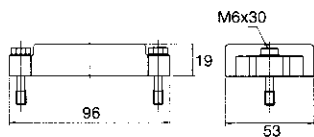
Bestell-Nr.
Order No.

Socketgehäuse: Kabeleingang seitlich
Surface mounted housing: Side entry



Metr.	PG	Bestelltext Designation	Bestell-Nr. Order No.
		HIP	
	16	HIP.6/16.SG.1.16.G	1-1102604-5
	2x16	HIP.6/16.SG.2.16.G	1-1102605-5
2xM32		HIP.6/16.SG.2.M32.G	0-1106424-1
		HIP-K	
	16	HIP-K.6/16.SG.1.16.G	2-1102604-5
	2x16	HIP-K.6/16.SG.2.16.G	2-1102605-5
2xM32		HIP-K.6/16.SG.2.M32.G	0-1106424-2
		EMV-K	
	16	EMV-K.6/16.SG.1.16.G	5-1102708-5
	2x16	EMV-K.6/16.SG.2.16.G	5-1102709-5
2xM32		EMV-K.6/16.SG.2.M32.G	0-1106415-2

Schutzkappe für Gehäuse-Unterteile
Protective covers for housings



Metr.	PG	Bestelltext Designation	Bestell-Nr. Order No.
		HIP	
		HIP/EMV.6/16.SKB	3-1106201-5
		HIP-K	
		HIP-K/EMV-K.6/16.SKB	4-1106201-5
		EMV-K	
		HIP-K/EMV-K.6/16.SKB	4-1106201-5

Passende Kabelverschraubungen ab Seite 173/Suitable Cable fittings from page 173