



DV SERIES MULTI-PURPOSE POWER LINE FILTERS



INTRODUCTIONS

Two-stage filters are for susceptibility use when equipment impedance at radiation frequency is low.

COMPONENTS

PART NO.	C1 (uF)	C2 (uF)	L1 (mH)	L2 (uH)	Cy (pF)	R (Ω)
03DVCG5	0.22	0.22	1.0	30	5500	330K
06DVCG5			1.7	70		
10DVCG5			1.2	40		
20DVGG5		0.47	1.73	30		

MINIMUM INSERTION LOSS IN dB

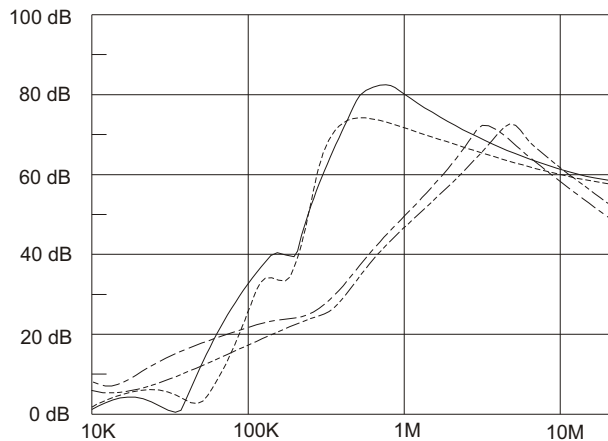
COMMON MODE (L-G) IN 50 OHM SYSTEM							
CURRENT RATING	FREQUENCY-MHz						
	.15	.50	1.0	5.0	10	30	
3A	12	25	35	50	45	40	
6A	23	40	50	55	55	40	
* 10A	10	20	30	50	45	35	
** 20A	20	20	35	45	45	30	

DIFFERENTIAL MODE (L-L) IN 50 OHM SYSTEM							
CURRENT RATING	.15	.50	1.0	5.0	10	30	
3A	30	50	60	60	70	50	
6A	25	35	50	55	55	50	
* 10A	25	55	60	60	55	55	
** 20A	25	50	50	50	45	45	

* VDE approved in 8A
 ** VDE approved in 16A

INSERTION LOSS (TYPICAL)

03DVCG5 --- COMMON MODE --- DIFF. MODE
 06DVCG5 --- COMMON MODE --- DIFF. MODE



SPECIFICATIONS

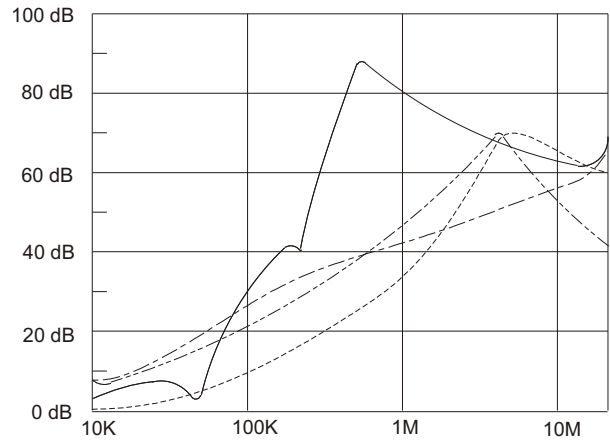
- Maximum leakage current each line-to-ground: @115VAC 60Hz: 0.45mA
 @250VAC 50Hz: 0.90mA
- Hipot rating (one minute)
 line-to-ground: 2250VDC
 line-to-line: 1450VDC
- Operating frequency: 50/60Hz
- Rated voltage: 115/250VAC

SERIES DIMENSIONS

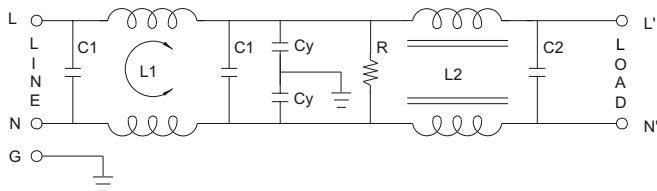
PART NO.	DIMENSIONS IN INCHES/mm				
	A	B	C	D	E
03DVCG5	3.25	1.90	1.15	2.38	2.77
	82.5	48.3	29.2	60.5	70.4
06DVCG5	3.75	2.06	1.54	2.94	3.34
	10DVCG5	95.2		52.3	74.7
20DVGG5	5.25	3.40		39.1	3.75
	130.5	86.4	95.3	95.3	105.1

GENERAL PURPOSE TWO-STAGE FILTERS

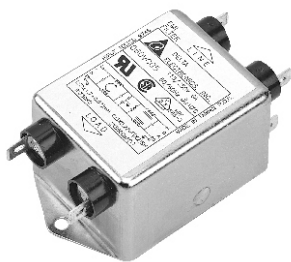
10DVCG5 --- COMMON MODE --- DIFF. MODE
 20DVGG5 --- COMMON MODE --- DIFF. MODE



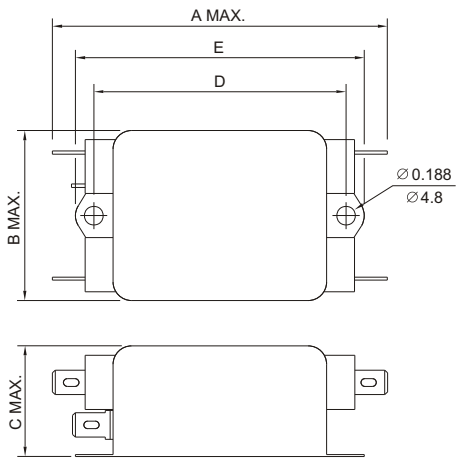
ELECTRICAL SCHEMATIC



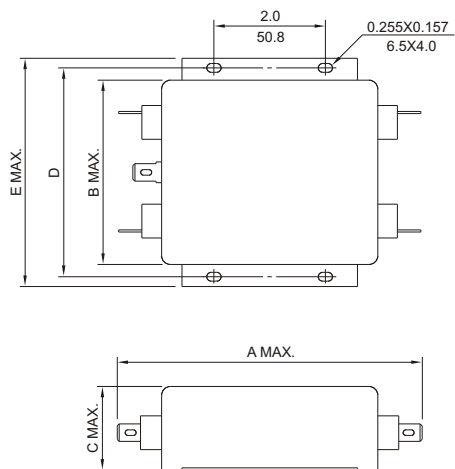
MECHANICAL CONSTRUCTION



CG5



GG5



UNIT: INCH
mm