

# Banana Plug - Insulated Round Body Solder Stud

## SPECIFICATIONS

**Plug Body:** Brass per QQ-B-626D

**Plug Spring:** Nickel silver per QQ-C-585

**Finish:** Nickel

**Insulated Handle:** Nylon 6/6 per ASTM D4066

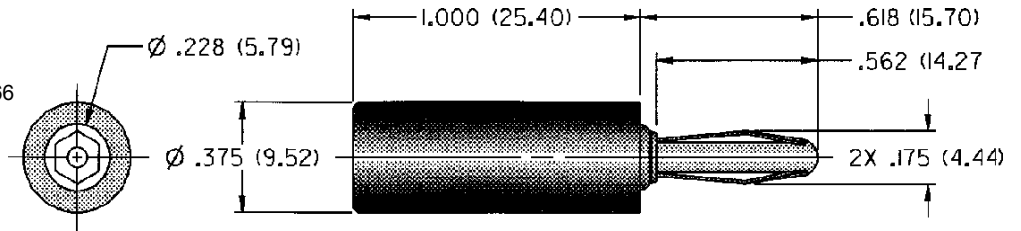
## RATINGS

**Current:** 15 amps

**Breakdown Voltage:** 3500 Vrms minimum

**Contact Resistance:** 0.010 ohms maximum

INCHES (MILLIMETERS)  
CUSTOMER DRAWINGS AVAILABLE UPON REQUEST



<b>NICKEL PLATING</b>	
108-1723-101	Black

**For Standard Banana Jack: .166 (4.23) Diameter**

## FEATURES:

- Wire can be soldered to threaded stud or flared and held by stud for solderless connection
- Solder stud accepts up to 16 gauge wire
- Nylon UL approved for self extinguishing