

### Models 1050 & 1060

**Test insulation on cables, transformers, motors and wiring installations**

#### SPECIFICATIONS

MODELS	1050	1060
<b>INSULATION TESTS</b>		
<b>Test Voltage</b>	50V 100V 250V 500V 1000V	2kΩ to 200GΩ 4kΩ to 400GΩ 10kΩ to 1000GΩ (1TΩ) 20kΩ to 2000GΩ (2TΩ) 40kΩ to 4000GΩ (4TΩ)
<b>Accuracy</b>	2kΩ to 40GΩ 40GΩ to 4TΩ	5% of Reading ± 3cts ±15% of Reading ± 10cts
<b>Voltage Test/Safety Check</b>		0 to 1000Vac/bc
<b>Voltage Warning Indicator</b>		>25V
<b>Test Inhibition</b>		Yes >25V
<b>Smooth Function</b>		Yes
<b>RESISTANCE TESTS</b>		
<b>Measurement Range</b>		0.01Ω to 400kΩ
<b>Test Voltage</b>		12.4Vdc max
<b>Test Current</b>		<6mAac
<b>Accuracy</b>	>4kΩ	±3% of Reading ± 3cts
<b>CONTINUITY TESTS</b>		
<b>Measurement Range</b>		0.01 to 39.99Ω
<b>Test Current</b>		≥200mA from 0.01 to 20.00Ω
<b>Accuracy</b>		±3% of Reading ± 4cts
<b>COMMUNICATION</b>		
<b>Memory of Reading over Time R(t)</b>	Yes (20 Readings)	Yes (128kB memory)
<b>Report Print Out Direct to Printer</b>	No	Preset format
<b>Memory of Test Results in Files</b>	No	128kB memory with RS-232
<b>PC Software/Report Generation</b>	No	DataView® (included)
<b>ELECTRICAL</b>		
<b>Power Source</b>	Eight 1.5V C Cells (included)	9.6V NiMH Battery Pack (included) 85 to 256V (50/60Hz)

#### PRODUCT INCLUDES



One red, one blue test lead, one black shielded lead, one each black, red and blue alligator clips, one black test probe and user manual. Model 1060 also includes PC RS-232, DB9 F/F 6 ft null modem cable, rechargeable battery, DataView® software, US 120V power cord and user manual.



#### FEATURES

- True Megohmmeter®
- Test voltage selections of 50V, 100V, 250V, 500V and 1000V
- Insulation measurements to 4000GΩ (4TΩ)
- Direct measurement of DAR and PI values
- Direct measurement of sample Capacitance
- Display of test voltage and run time
- Programmable test run times and PI times
- Smooth and Alarm functions
- Automatic test inhibition (if live sample >25V)
- Automatic discharge and display of discharge voltage
- Large dual display with time, voltage and measurement
- Bright blue electroluminescent backlight
- Battery powered (Model 1050)
- Auto power-down when not in use
- Remote operation with optional test probe
- Rugged, dual wall, weatherproof field case with detachable lead/accessory pouch
- EN 61010-1, 600V CAT III, EN 61557

#### Model 1060 includes the following additional features:

- AC rechargeable NiMH battery pack
- RS-232 interface to DataView® for easy report printing
- 128kB memory to store measurements in specific files
- Remote operation of megohmmeter through PC
- Includes DataView® software for data storage, real-time display, analysis and report generation

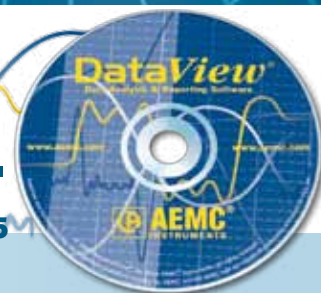
#### CATALOG NO. DESCRIPTION

2130.01	Megohmmeter Model 1050 (Digital, with Analog Bargraph, Backlight, Alarm, Timer, 50V, 100V, 250V, 500V, 1000V, Auto DAR/PI, Resistance, Continuity)
2130.03	Megohmmeter Model 1060 (Digital, with Analog Bargraph, Backlight, Alarm, Timer, 50V, 100V, 250V, 500V, 1000V, Auto DAR/PI, Resistance, Continuity, RS-232 w/ DataView® software, 128kB Memory)
2118.97	Remote Test Probe

# DataView®

## Data Analysis and Reporting Software for Megohmmeters

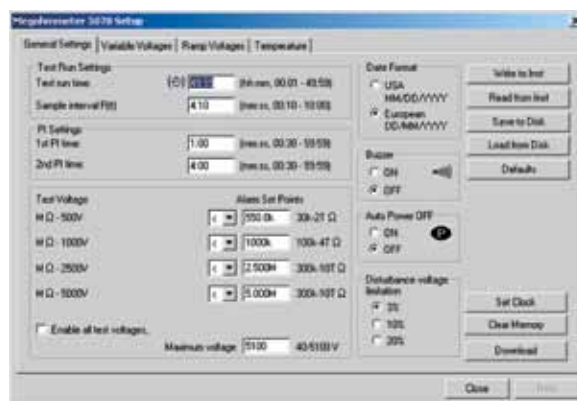
**Configure all functions of the  
Megohmmeter Models 1060, 5060, 5070, 6550 & 6555**



- Print reports of all test results
- Select test voltage and run tests from your computer with a simple click and execute process
- Capture and display data in real-time
- Retrieve data from the instrument's memory:
  - Over 1500 insulation resistance measurements
  - Over 4000 resistance measurements
- Display DAR and PI ratios
- Plot graphs of manual and timed tests
- Include your analysis comments section with the report
- Store a library of setups for different applications
- Certification of results through report generation



Clear and easy setup from one dialog box for Model 5060.

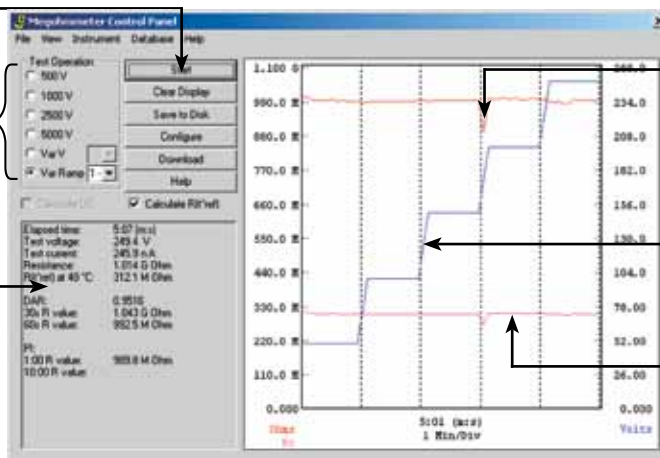


Four tabbed dialog boxes allow for clear and easy setup of all functions of the Model 5070, including setup for variable voltage and alarm set points, as well as step voltage tests and temperature compensation.

One button operation  
starts test and  
graphs results

Test  
voltage  
selection

Test result status box  
displays complete test  
results in real-time



Insulation resistance  
during the test run

Step voltage during  
the test run

Insulation resistance  
with temperature  
compensation

Run test and display text and graphical results from one dialog box.  
Model 5070 also displays step voltage.