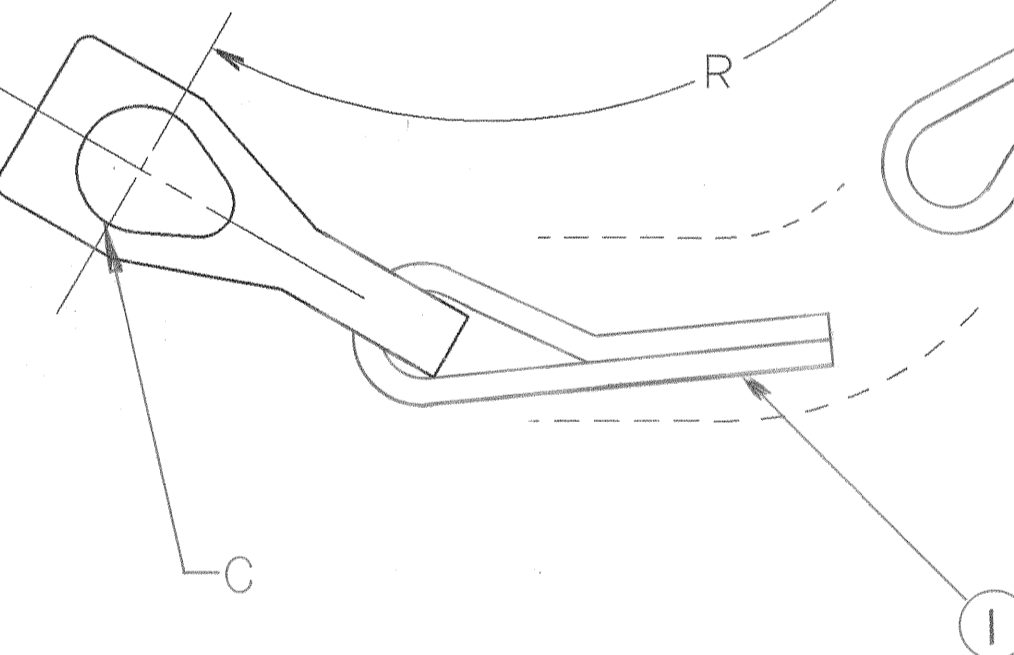
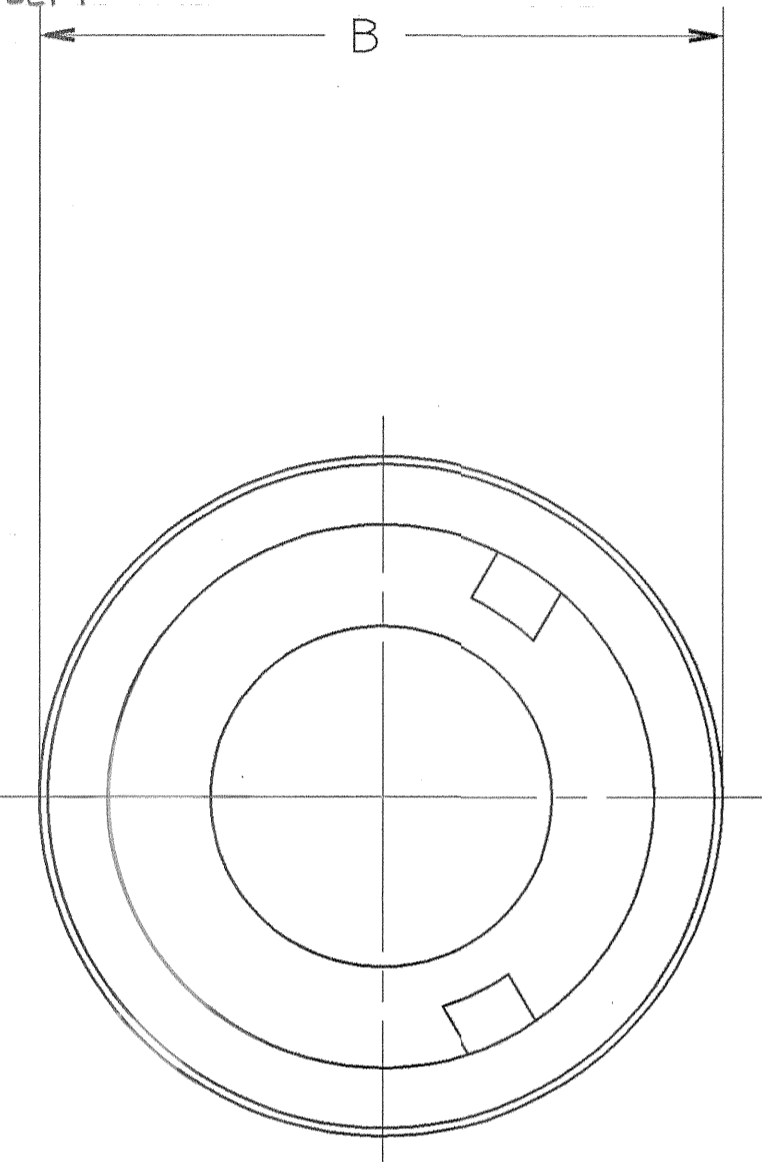
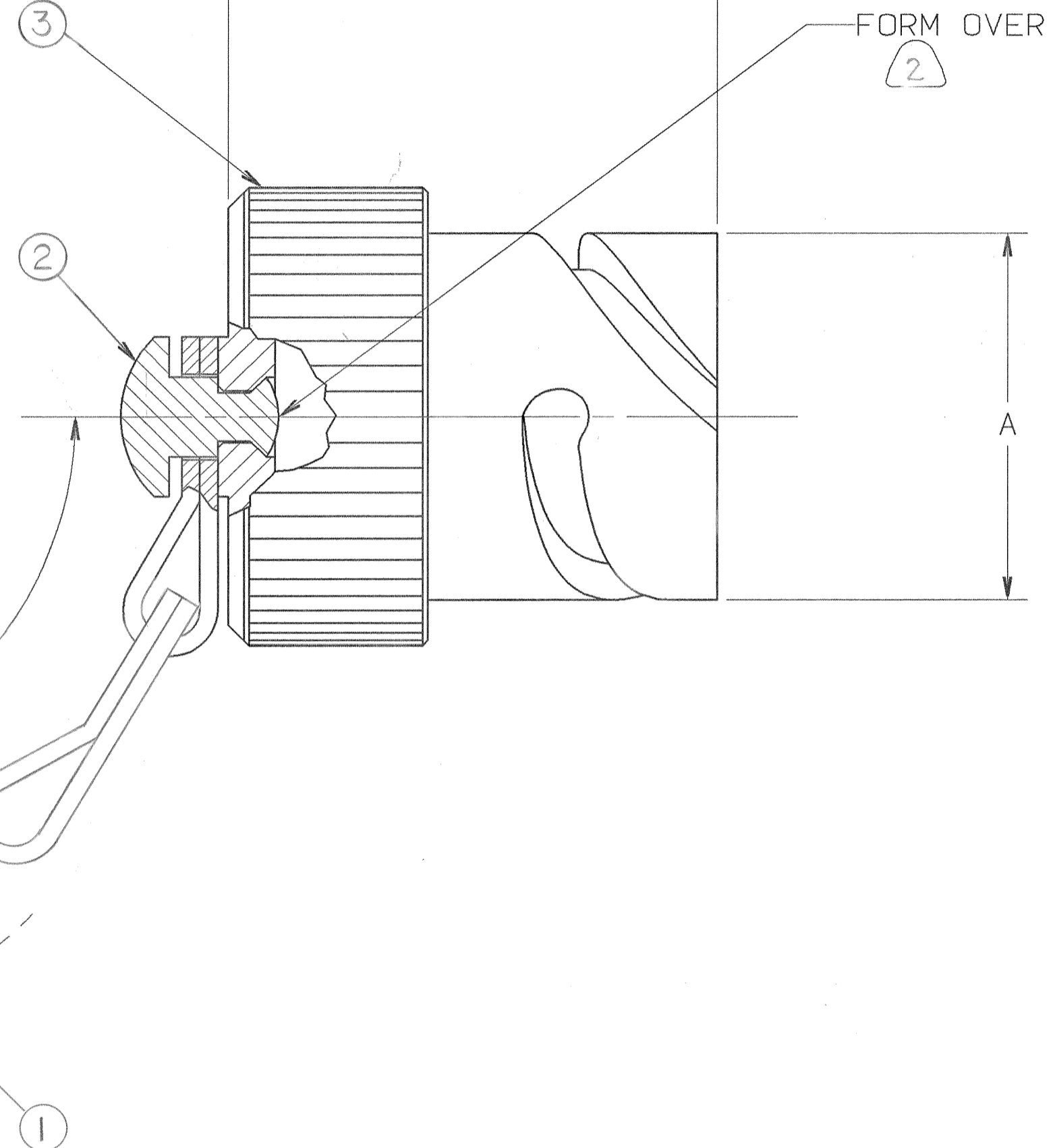
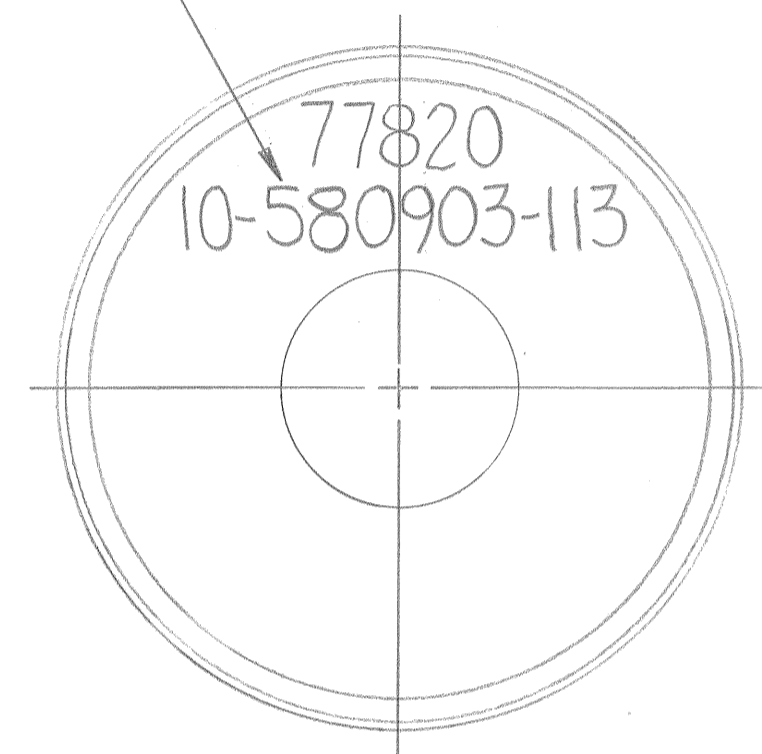


| 4 | | | | 3 | | | | 2 | | | | 1 | | | |
|-----|-----------------------------------|---------------------|----------|------|-----|---|----------------------|-----------------|------|-----|---|---------------------|-----------------------------|--|--|
| REV | DESCRIPTION | DATE | APPROVED | ZONE | LTR | DESCRIPTION | DATE | APPROVED | ZONE | LTR | DESCRIPTION | DATE | APPROVED | | |
| J | (CLII) ADDED NOTE 3 ECN: 92446 | 3-17-04 Prescott | | | E | (CLII) SEE CHG NOTICE ECN: 29161 | 4-6-95 Prescott | <i>Prescott</i> | | | | | | | |
| K | SEE ECN B8674 | 10/30/15 | Prescott | | F | (CLII) ADDED & REL -XXY & -XXZ DATA ECN: 82880 | 2-27-97 Prescott | <i>Prescott</i> | | A | INITIAL RELEASE NUM: 70091-033 | | | | |
| L | SEE ECN C3032 | 5/20/16 | Prescott | | G | (CLII) CHG BIK CHG ONLY ECN: 84024 | 1-13-98 Prescott | <i>Prescott</i> | | B | (CL II) SEE CHANGE NOTICE ECN: 26094 | 3/13/91 PRESCOTT | <i>Shepler</i> <i>Om</i> | | |
| | | | | | H | (CLII) ADDED G DATA ECN: 87224 | 10-18-99 Prescott | <i>Prescott</i> | | C | (CLII) SEE CHG NOTICE ECN: 28298 | 4/25/94 Prescott | <i>p JED</i> | | |
| | | | | | | | | | | D | (CLII) SEE CHG NOTICE ECN: 29124 | 12/1/94 Prescott | <i>p Prescott</i> | | |

INK STAMP "77820" AND PART NO. PER 9-2811 APPROX .094-.125 HIGH.
EXAMPLE:
77820 10-580903-113



| FIND NO. | QTY REQD. | FSCM NO. | PART NUMBER | DESCRIPTION | NOTE REF. |
|----------|-----------|----------|-------------|-------------|-----------|
| 3 | 1 | | SEE COLUMN | CAP | 2 |
| 2 | 1 | | 10-248997 | RIVET | |
| 1 | 1 | | SEE COLUMN | CHAIN | |

| SPECIFICATIONS | SIGNATURES | DATES | PARTS LIST | |
|---------------------------------------|---|---|---|-----------------|
| MATERIAL SPEC. N/A | PREPARED <i>D. Frear</i> CHECKED <i>A. Smith</i> MATERIAL <i>R. Meenan</i> APPROVED <i>A. Smith</i> APPROVED <i>D. Meenan</i> 1ST PART NO. 10-580903-011 | 5/6/88 1-31-91 1-31-91 1-31-91 | AMPHENOL CORPORATION BENDIX CONNECTOR OPERATIONS SIDNEY, N.Y. | |
| PROCESS SPEC. 9-2811 SEE NOTE 1 | | | CAP, PROTECTIVE, PLUG, TYPE GT, REVERSE BAYONET | U |
| | SIZE C | FSCM NO. 77820 | 10-580903 | REV L |
| | SCALE NONE | WT. | REF 10-435947-()3 | SHEET 1 OF 2 |

COMPANY ID: I
CODED/MS/CUST: N
INTERNAL: Y
LOTNO: N
DATE CODE: N
SEE PRINT: N

UNLESS OTHERWISE SPECIFIED
LINEAR DIMENSIONS ARE IN
INCHES.
TOLERANCES: .XXX±.010,
.XX ±.03, .X ±.1,
ANGLES ±2°.
OTHER STANDARDS PER 9-3800
AND DOD-D-1000.
NOTE REF. =

N/A
N/A
NEXT ASSEMBLY

SEE SHEET 2

NOTES:
THE USE OF THIS DOCUMENT IS UNLIMITED.
HOWEVER, DOCUMENTS REFERENCED HEREON
MAY CONTAIN LIMITED RIGHTS DATA.

10-580903

4

3

2

1

| PART NUMBER | SIZE | CHAIN | A | | C | L MAX | R APPROX. | CAP |
|----------------|------|--------------|-------------------------|---------------------------|------|----------|--------------|----------------|
| | | | DIA + .000 - .006 | DIA MAX AFTER KNURL | | | | |
| 10-580903-11() | 10SL | 10-229404-1 | .717 | .804 | .167 | .945 | 5.000 | 10-580917-11() |
| -14() | 14S | 10-229404-1 | .969 | 1.058 | | .945 | | -14() |
| -16() | 16S | 10-229404-1 | 1.079 | 1.169 | | .945 | | -16() |
| -17() | 16 | 10-229404-1 | 1.079 | 1.169 | | 1.260 | | -17() |
| -18() | 18 | 10-229404-1 | 1.213 | 1.296 | .167 | 1.260 | | -18() |
| -20() | 20 | 10-435973-26 | 1.346 | 1.424 | .187 | 1.260 | 5.500 | -20() |
| -22() | 22 | 10-435973-26 | 1.472 | 1.551 | | | | -22() |
| -24() | 24 | 10-435973-26 | 1.610 | 1.694 | .187 | | | -24() |
| -28() | 28 | 10-435973-15 | 1.839 | 1.917 | .218 | | 7.500 | -28() |
| -32() | 32 | 10-560908-L | 2.102 | 2.188 | .266 | | | -32() |
| -36() | 36 | | 2.346 | 2.426 | | | | -36() |
| -40() | 36 | | 2.579 | 2.649 | | | | -40() |

3. APPLY A THIN COAT OF LUBE 9-9031 TO THE RAMPS OF EACH CAP, MAKING SURE THE SIDES OF EACH RAMP ARE COVERED.

2. CHAIN MUST MOVE FREELY ON PROTEVTIVE CAP AFTER ASSEMBLY.

1. TO COMPLETE PART NUMBER, ADD APPLICABLE LAST CHARACTER SUFFIX FOR DESIRED FINISH:

| FINISH | SUFFIX |
|---|--------|
| BRIGHT CADMIUM PLATE | -XX1 |
| BLACK ANODIZE | -XX2 |
| OLIVE DRAB CADMIUM PLATE | -XX3 |
| BLACK COBALT | -XXY |
| BLACK ANODIZE | -XXZ |
| BRIGHT CADMIUM PLATE, NICKEL BASE PLATE | -XX7 |
| OLIVE DRAB CADMIUM PLATE, NICKEL BASE PLATE | -XX9 |
| NICKEL ALLOY PLATE | -XXG |
| GREEN ZINC ALLOY PLATE | -XXU |
| GRAY ZINC NICKEL PLATE | -XXFL |
| BLACK ZINC ALLOY PLATE | -XXY |
| BLACK HARD COAT ANODIZE | -XXZ |

NOTES:

THIS DOCUMENT CONTAINS PROPRIETARY INFORMATION AND SUCH INFORMATION MAY NOT BE DISCLOSED TO OTHERS FOR ANY PURPOSE OR USED FOR MANUFACTURING PURPOSES WITHOUT WRITTEN PERMISSION FROM THE AMPHENOL CORPORATION.

| | | | |
|-----------|-------------------|-----------|------------|
| SIZE C | FSCM NO. 77820 | 10-580903 | REV. L |
| SCALE | WT. | REF | SHEET 2 |

10-580903 SLAWFET