

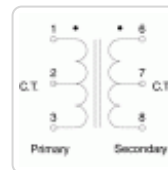
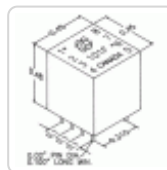
Miniature Audio Potted *101 Series* PC Board Mount

Features



- Pin type, miniature size, P.C. board mount, net weight of only 0.1 oz.
- Rugged potted construction produces a completely sealed unit withstanding severe environmental conditions.
- Secondary may be used as primary and primary as secondary.
- Power level: Minimum frequency range: 300 Hz. to 100 Khz. +/- 0.5 db @ 100 mw
 - Frequency range @ +10 dbm is 200 Hz. to 100 Khz. +/- 0.5 db
 - Frequency range @ +15 dbm is 200 Hz. to 100 Khz. +/- 0.5 db
 - Frequency range @ +20 dbm is 300 Hz. to 100 Khz. +/- 0.5 db
 - Frequency measurements with no D.C. current saturation.
- See data sheets for more detailed information.

Gallery



Part No.	Nominal Impedance (Ohms)		Nominal Resistance (Ohms)		Useful Impedance Range (Ohms)	
	Primary	Secondary	Primary	Secondary	Pri./Sec. to Pri./Sec.	
101D	300 ct	600 ct	20.4	54	150/300	600/1200
101F	600 ct	600 ct	44	52	300/300	1200/1200
101H	1200 ct	600 ct	80	53	600/300	2400/1200
101J	2500 ct	600 ct	150	54	1250/300	5000/1200
101P	300 ct	50 ct	20.4	4.8	150/25	600/100
101R	600 ct	50 ct	44	4.7	300/25	1200/100
101V	2500 ct	50 ct	150.7	4.9	1250/25	5000/100

Data subject to change without notice