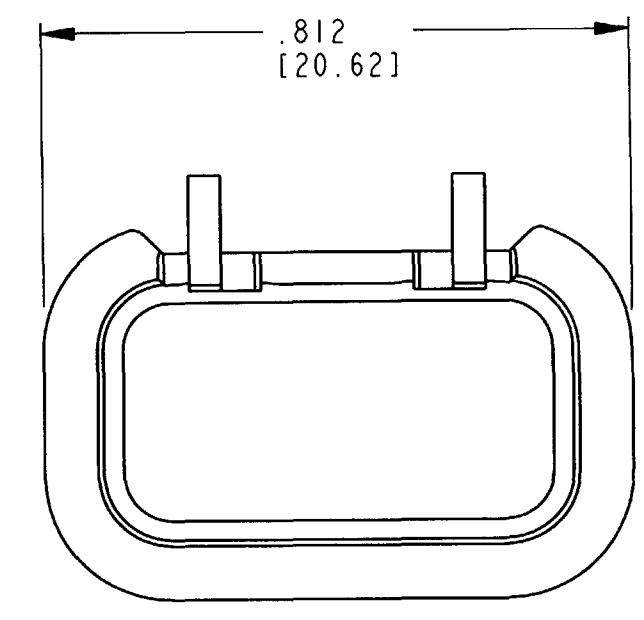
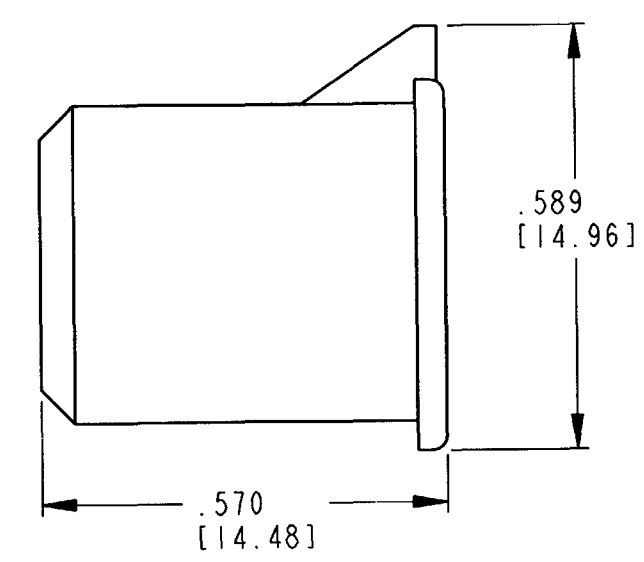
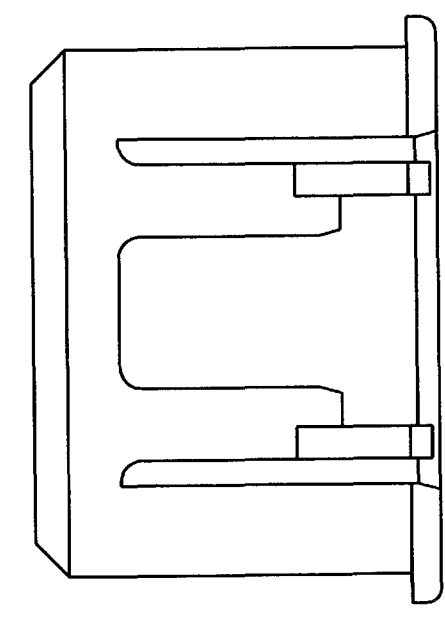
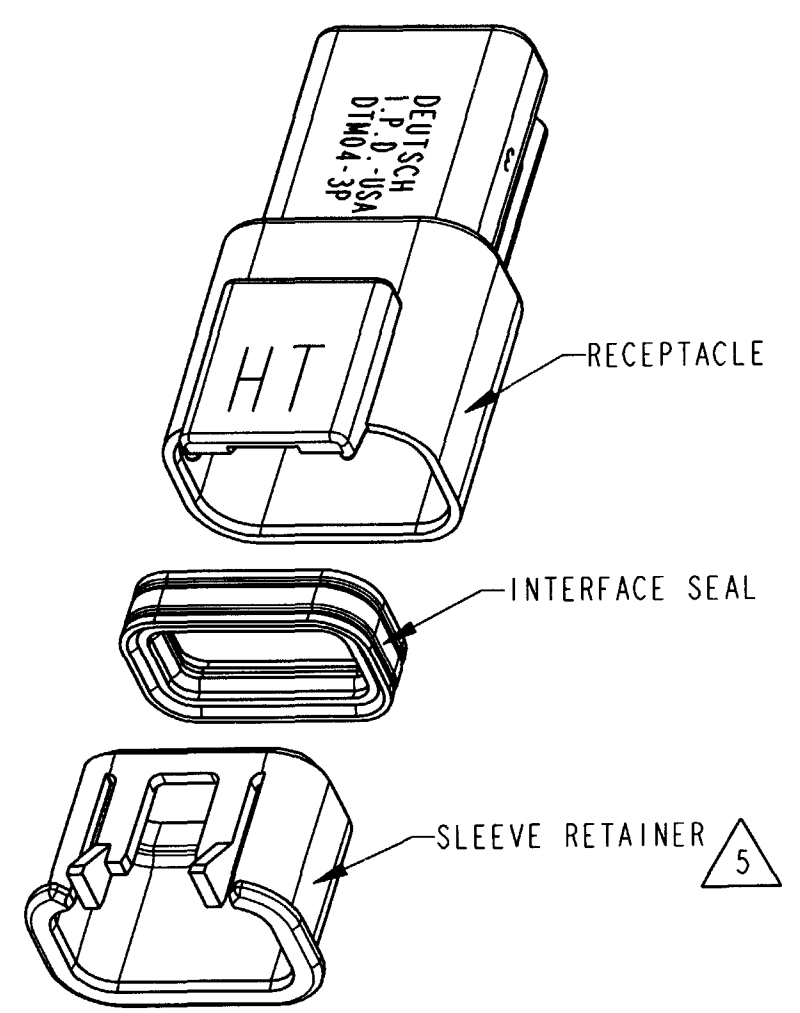


REV	1011-322-0305	REVISIONS			
NC		SYM	DESCRIPTION	DATE	APPROVED
		NC	NEW RELEASE PER E.O. PI9777	3-4-08	RDR



5. ASSEMBLE SLEEVE RETAINER AS SHOWN. SNAP SLEEVE RETAINER INTO RECEPTACLE. VERIFY SLEEVE RETAINER RETENTION FINGERS ARE FULLY SEATED BEHIND RECEPTACLE LATCH BUMPS. RECEPTACLE AND INTERFACE SEAL SHOWN FOR REFERENCE ONLY.

- 4. MATERIAL: PLASTIC (BLACK) RATED AT 150°C.
 - 3. PART DESIGNED TO FIT DTM04-3P-**** (**** = ALL MODIFICATIONS) HIGH TEMPERATURE RECEPTACLES ONLY. CONSULT FACTORY FOR MODIFICATIONS.
 - 2. DIMENSIONS ARE ±.025 [.64]
 - 1. DIMENSIONS ARE IN INCHES [mm]
- NOTES: UNLESS OTHERWISE SPECIFIED

SIGNATURE & DATE	
DR	P. CARNAHAN 02/29/08
CHK	<i>[Signature]</i> 3/3/08
PE	<i>[Signature]</i> 2/29/08
APPD	<i>[Signature]</i> 2/29/08
SCALE	NONE

SLEEVE RETAINER
FOR 3 PIN RECEPTACLE
COLOR: BLACK
-EE04 MOD
DTM SERIES
ENVELOPE

EP 172	MATL. CODE
3850 INDUSTRIAL AVE. HEMET, CA 92545	
1011-322-0305	
DWG SIZE	CODE 11139 SHEET OF