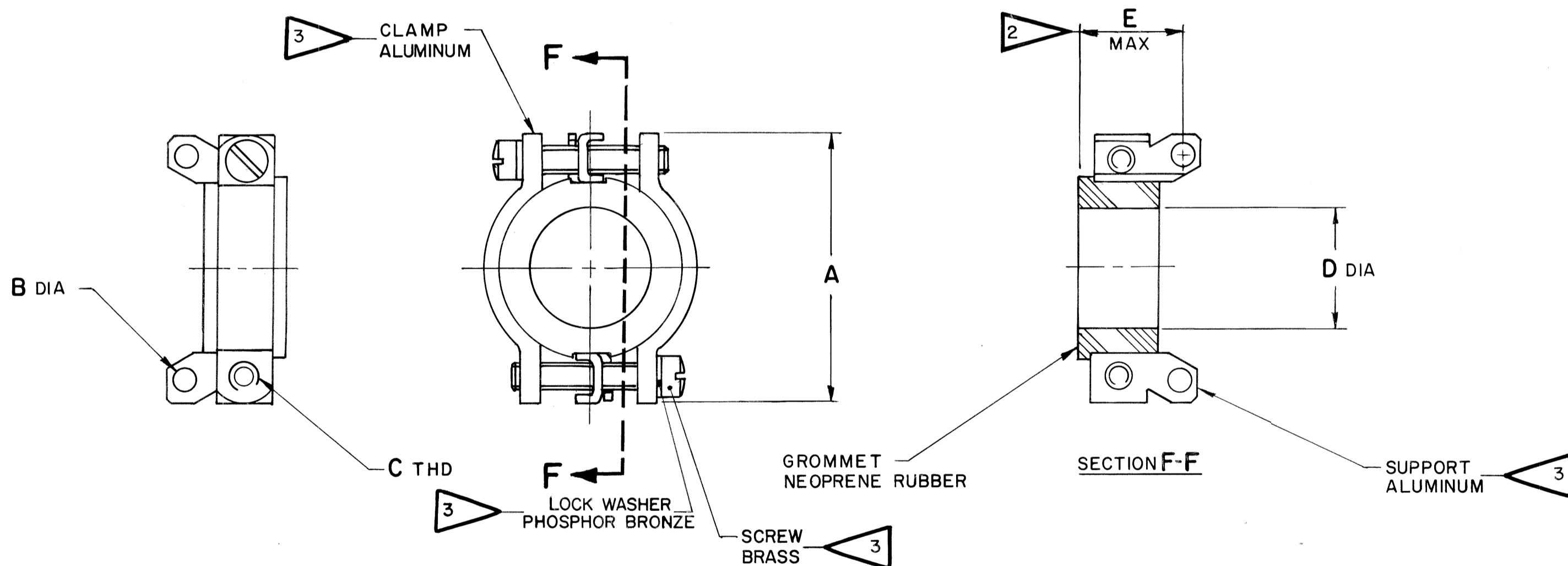


PART NUMBER	A ±.025	B DIA +.004 -.002	C THREAD	D DIA	E MAX
10-36233-10	.750	.150	6-32 UNC - 2B	.125	.706
-12	.812			.188	
-14	.938			.312	
-16	1.062			.375	
-18	1.125			.500	
-20	1.375	.177	8-32 UNC - 2B	.625	.842
-24	1.562	.177	8-32 UNC - 2B	.750	.842
-32	2.156	.209	.2500-20 UNC - 2 B	1.000	1.095
-36	2.281			1.125	
-40	2.531			1.125	

REL NO. P6401-7		REVISIONS		
CHG NO.	SYM	DESCRIPTION	DATE	APPROVED
43525 -580	A1	PROVIDED ENVELOPE DRAWING.	10-21-64 Stearns	<i>[Signature]</i>
58500 144	B	(MFG) ADDED REL - XX4 FINISH	4-27-77 Colony	<i>[Signature]</i>
72479 -1	C	(CL II) REM REL COL, (ENVELOPE DRAWN)	9-18-84 S. Biviano	<i>[Signature]</i>



4. SEE SEPARATE PARTS LIST FOR COMPONENT PART NUMBERS AND QUANTITIES.

3. SEE NOTE ONE FOR FINISH IN ACCORDANCE WITH APPLICABLE COMPLETED ASSEMBLY NUMBER.
2. DIMENSION INDICATES FINAL INSTALLATION. ASSEMBLY SHIPPED WITH PARTS IN FREE POSITION AS SHOWN.

1. TO COMPLETE ASSEMBLY NUMBER, ADD APPLICABLE THIRD DIGIT SUFFIX NUMBER FOR DESIRED FINISH:
BRIGHT CADMIUM PLATE SUFFIX -XX1
BLACK ANODIZE SUFFIX -XX2
CADMIUM PLATE OLIVE DRAB SUFFIX -XX3
GREY ANODIZE SUFFIX -XX4

NOTES: REF SYMBOL

ITEM NO.	QTY REQD	DESCRIPTION	PART NUMBER	CODE IDENT	ZONE
PARTS LIST					
UNLESS OTHERWISE SPECIFIED					
LINEAR DIMENSIONS ARE IN INCHES. TOLERANCES: 3 PLACES ±.010; 2 PLACES ±.03; 1 PLACE ±.1; ANGLES ±2°. OTHER STANDARDS PER SCINTILLA SPEC 9-3800 AND MIL-STD 8.					
MATERIAL SPEC		PROCESS SPEC		DRAWN: STEARNS DATE: 10-21-64	
				CHECKED: Blomeo DATE: 11-18-64	
				MATERIAL:	
				STANDARDS: A. Balanti 11-18-64	
				DRAFTING: [Signature] 11-24-64	
				ENGINEERING: [Signature] 11-24-64	
				DEVELOPMENT: R. Carr	
THE Bendix CORPORATION SCINTILLA DIVISION SIDNEY, NEW YORK, U.S.A.					
TITLE: CLAMP SUPPORT, CABLE, ELECTRICAL CONNECTOR, ASSEMBLY OF					
CODE IDENT NO.		SIZE		REF	
77820		C		10-36233	
SCALE NONE		WT		SHEET	

[10-36233 SCANNED]