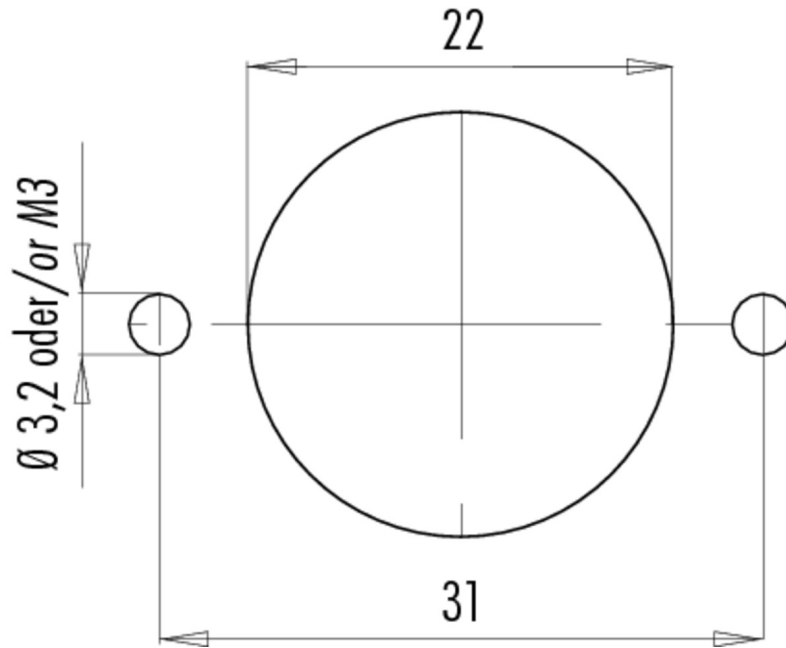


Product description **RD24 female panel mount connector, Contacts: 6+PE, shielding is not possible, screw clamp, IP67, UL, ESTI+, VDE**

Area **RD24 series 693**
Order number **09 4220 00 07**

Assembly instructions / Panel cut-out



Product description	RD24 female panel mount connector, Contacts: 6+PE, shielding is not possible, screw clamp, IP67, UL, ESTI+, VDE
Area	RD24 series 693
Order number	09 4220 00 07

Security notices

The connector must not be connected or separated under load. Non-observance and incorrect use can result in personal injury.

The connectors are designed for use in plant, control system and electrical equipment. The end user is responsible for checking whether the connectors are suitable for use in other applications.

Connectors with degree of protection IP 67 and IP 68 are not suitable for use under water. When used outdoors, the connectors must be separately protected against corrosion. For further information about IP degrees of protection refer to 'Technical support' in the Download Centre.