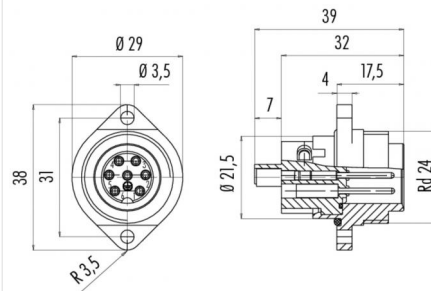


Product description **RD24 male panel mount connector, Contacts: 6+PE, shielding is not possible, screw clamp, IP67, UL, ESTI+, VDE**
 Area **RD24 series 693**
 Order number **09 4219 00 07**

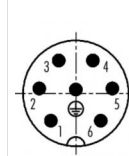
Illustration



Scale drawing



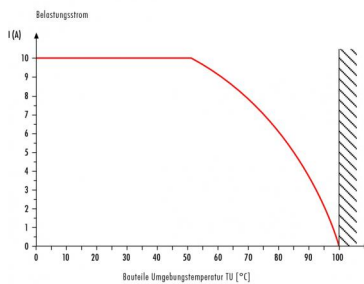
Contact arrangement



	X	Y
1	-3,25	-3,54
2	-4,76	0,63
3	-2,22	4,26
4	2,22	4,26
5	4,76	0,63
6	3,25	-3,54
PE	0,00	0,50

1
2
3
4
5
6
⊕ grün/gelb

Derating curve



You can find the assembly instructions on the next page.

Technical data

General values

Connector design male panel mount connector
 Connector locking system screw
 Termination screw clamp
 Wire gauge (mm) max. 1.50 mm²
 Wire gauge (AWG) max. 16
 Upper limit temperature 100 °C
 Lower limit temperature -40 °C
 Customs tariff number 85369010
 Packaging Unit 10

Electrical values

Rated current (40 °C) 10 A (8 A UL)
 Rated voltage 250 V
 Rated impulse voltage 4000 V
 Pollution degree 3
 Overvoltage category III
 Insulating material group III
 Insulation resistance $\geq 10^{10} \Omega$
 EMC compliance shielding is not possible
 Degree of protection IP67
 Mechanical operation > 500 Mating cycles

Cable data

Approval 1 UL
 Approval 2 ESTI+
 Approval 3 VDE

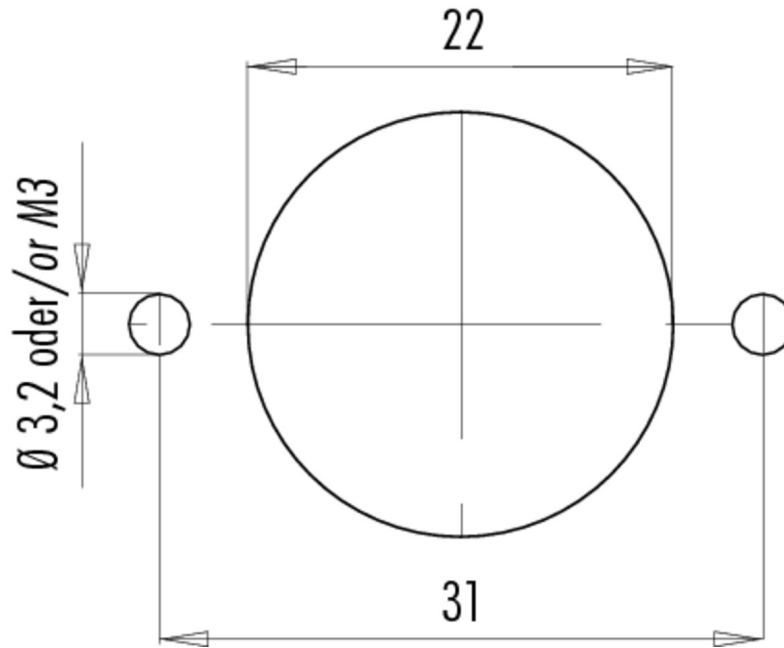
Material

Contact material CuZn (brass)
 Contact plating Ag (silver)
 Contact body material PBT
 Housing material PA

Product description **RD24 male panel mount connector, Contacts: 6+PE, shielding is not possible, screw clamp, IP67, UL, ESTI+, VDE**

Area **RD24 series 693**
Order number **09 4219 00 07**

Assembly instructions / Panel cut-out



Product description	RD24 male panel mount connector, Contacts: 6+PE, shielding is not possible, screw clamp, IP67, UL, ESTI+, VDE
Area	RD24 series 693
Order number	09 4219 00 07

Security notices

The connector must not be connected or separated under load. Non-observance and incorrect use can result in personal injury.

The connectors are designed for use in plant, control system and electrical equipment. The end user is responsible for checking whether the connectors are suitable for use in other applications.

Connectors with degree of protection IP 67 and IP 68 are not suitable for use under water. When used outdoors, the connectors must be separately protected against corrosion. For further information about IP degrees of protection refer to 'Technical support' in the Download Centre.